

Lee Angus BULL SALE

Sitz Stellar 726D



AAA +18397542 BD: 1/23/2016

Sitz Resilient 10208



AAA 19057457 BD: 2/15/2018

U-2 Coalition 206C



AAA 18626847 BD: 1/23/2015

**TUESDAY,
MAY 14,
2024**

1:00 PM MDST

**Bowman Livestock Marketing
Bowman, North Dakota**

- Selling -

55 Performance Tested Registered Yearling
ANGUS BULLS

www.leeangusranch.com

Lee Angus Ranch

Raymond, Chris, Sterling & Sierra Lee

16503 81st St SW

Rhame ND 58651

www.leeangusranch.com

701-279-5717

Raymond 701-440-0669

Sterling 701-440-8095

Lee Angus BULL SALE

Welcome Cattlemen...

To our Annual Production Sale, Tuesday, May 14, 2024 at 1:00 p.m. (MDST) at Bowman Livestock Marketing, Bowman, ND.

The bulls are guaranteed to be breeders. To help each bull reach his full genetic potential, they were fed a high roughage ration. At birth the bulls were vaccinated with Alpha 7 C&D and at branding were vaccinated with Vista Once. They were preconditioned with Vision 7 with Somnus and Vista Once. At weaning they received Vista 5 plus Vista 7 with Somnus and were poured with Symentec and Cleanup II. The bulls will be semen tested before sale day and scrotal measurements will be available sale day.

There will be bulls with added growth, calving ease and extra length, abundant amount of depth of body and spring of rib. We are featuring sons of many of the top bulls in the Angus breed.

As in the past, if you haul your bulls sale day we will deduct \$50.00 per bull. If we can be of any assistance with your bull selection, please feel free to call Raymond at 701-279-5717. Come join us for a free noon meal and look over this year's offering. Hope to see you May 14th!

TUESDAY, MAY 14, 2024
1:00 PM MDST
Bowman Livestock Marketing
Bowman, ND

- Selling -

Performance Tested Registered Yearling
55 ANGUS BULLS

General Information

ACCOMMODATIONS: Bowman has several nice motels. Call us, and we will reserve a room for you.

TRUCKING: Free delivery up to 300 miles.

\$50 DISCOUNT per bull if you haul them home sale day.

HEALTH: All have had Alpha 7 C&D, Vista Once, Vision 7 with Somnus and Vista 5 vaccinations and poured with Symentec and Cleanup II.

TERMS: Cash

GUARANTEE: All animals selling under the rules and regulations adopted by the American Angus Association, and bulls will have passed a semen evaluation test.

VIDEOS & PHOTOS: By Annette Steffan

Sale Day Toll Free
877-211-0600

Auctioneer
Seth Weishaar

Videos can be viewed at
dvauction.com or www.leeangusranch.com

For more information contact

Lee Angus Ranch
Raymond, Chris, Sterling & Sierra Lee

16503 81st St SW
Rhame ND 58651
www.leeangusranch.com

701-279-5717
Raymond - 701-440-0669
Sterling - 701-440-8095

REFERENCE SIREs



Sire **A**

Sitz Stellar 726D

BD: 1/23/2016 AAA #18397542
AMF-CAF-D2F-DDF-M1F-NHF-OSF GEN: i50K

BENFIELD SUBSTANCE 8506
MOHNEN SUBSTANTIAL 272
MOHNEN GLYN MAWR ELBA 1758

H A IMAGE MAKER 0415
BENFIELD ELBA 1105
LT TERRITORY 5824 OF EA
MOHNEN GLYN MAWR ELBA 1345

CONNEALY FINAL PRODUCT
SITZ PRIDE 200B
SITZ PRIDE 308Y

CONNEALY PRODUCT 568
EBONISTA OF CONANGA 471
SITZ UPWARD 307R
SITZ PRIDE 44P

\$W	63
\$F	94
\$G	44
\$B	138
C	229

CED	BW	WW	YW	MILK	CW	MARB	RE	FAT
5	-.2	69	125	17	48	.63	.41	.065



Sire **B**

Sitz Resilient 10208

BD: 2/15/2018 AAA #19057457
AMF-CAF-D2F-DDF-M1F-NHF-OSF-RDF GEN: Angus GS

MOHNEN SUBSTANTIAL 272
SITZ STELLAR 726D
SITZ PRIDE 200B

BENFIELD SUBSTANCE 8506
MOHNEN GLYN MAWR ELBA 1758
CONNEALY FINAL PRODUCT
SITZ PRIDE 308Y

SITZ TOP GAME 561X
SITZ MISS BURGESS 1856
SITZ MISS BURGESS 4381

GDAR GAME DAY 449
SITZ PRIDE 88T
SITZ RAINMAKER 10899
SITZ MISS BURGESS 1609

\$W	76
\$F	79
\$G	68
\$B	148
C	267

CED	BW	WW	YW	MILK	CW	MARB	RE	FAT
7	.6	75	134	21	41	.98	.57	.016

ANGUS GS
Owned by Megan Gordon



Sire **C**

U-2 Coalition 206C

BD: 1/23/2015 AAA #18626847
AMF-CAF-D2F-DDF-M1F-NHF-OSF-RDF GEN: GGPLD

CONNEALY CONSENSUS 7229
HF SYNDICATE 213Z
HF MISS BLACKCAP 27R

CONNEALY CONSENSUS
BLUE LILLY OF CONANGA 16
TC FREEDOM 104
HF MISS BLACKCAP 50N

YOUNG DALE XCLUSIVE 25X
U2 ERELITE 109Z
U-2 ERELITE 1X

YOUNG DALE KNOCK OUT 134U
YOUNG DALE POLLYANNA 60T
S A V FINAL ANSWER 0035
U-2 ERELITE 8109U

\$W	57
\$F	95
\$G	41
\$B	136
C	238

CED	BW	WW	YW	MILK	CW	MARB	RE	FAT
11	.9	55	110	29	38	.40	.51	-.021



Sire **D**

A A R Frontman 3132

BD: 2/21/2013 AAA #17614182
 AMF-CAF-D2F-DDF-M1F-NHF-OHF-OSF-RDF GEN: HD50K

KESSLERS FRONTMAN R001
APEX FRONTMAN 081
 APEXETTE PRIDE 9067

CONNEALY FRONT PAGE 0228
 KESSLERS BELL 0024
 CONNEALY THUNDER
 APEXETTE 053 PRIDE 5046

B C MATRIX 4132
A A R BLACKBIRD 9044
 A A R BLACKBIRD 7026

O C C EMBLAZON 854E
 CAF PURE PRIDE EXT 99
 MYTTY IN FOCUS
 A A R BLACKBIRD 5006

\$W
81
\$F
119
\$G
34
\$B
152
C
274

CED	BW	WW	YW	MILK	CW	MARB	RE	FAT
12	-2.0	61	116	34	62	.37	.40	.034

A A R Frontman 3132 comes from a powerful dam. His females make excellent cows - great uddered, wedge shaped and deep bodied. This sire is impressive - great feet, super disposition, long and thick. His calves are easy to handle and are quiet.

Sire **E**

Lees Bomber 0184

BD: 3/26/2020 AAA #19945408
 GEN: Angus GS

KM BROKEN BOW 002
CASINO BOMBER N33
 CASINO ANNIE K48

SUMMITCREST COMPLETE 1P55
 SUMMITCREST PRINCESS 0P12
 DPL UPWARD L70
 CASINO ANNIE G64

\$W
60
\$F
84
\$G
47
\$B
131
C
238

R C BLACK CIGAR 0293
SHOBANDO 145 LAR
 SHOBANDO 878 405 LAR

CONNEALY FRONTLINE
 REV ROSE OF C H 8091
 BON VIEW NEW DESIGN 878
 SODAK SHOBANDA 6029-96

CED	BW	WW	YW	MILK	CW	MARB	RE	FAT
13	.8	63	107	22	42	.71	.21	.050

ANGUS GS
Powered by Regen Genetics

Sire **F**

Lees Frontman 1141

BD: 3/18/2021 AAA #20280936
 GEN: Angus GS

APEX FRONTMAN 081
A A R FRONTMAN 3132
 A A R BLACKBIRD 9044

KESSLERS FRONTMAN R001
 APEXETTE PRIDE 9067
 B C MATRIX 41323
 A A R BLACKBIRD 7026

\$W
78
\$F
90
\$G
29
\$B
119
C
220

APEX WINDY 078
PAULA 362 LAR
 PAULA LEAD 917 LAR

H A R B WINDY 702 J H
 APEXETTE LUCY 6037
 H A IMAGE MAKER 0415
 PAULAS LEAD 728 LAR

CED	BW	WW	YW	MILK	CW	MARB	RE	FAT
5	.7	68	117	35	49	.24	.21	-.022

ANGUS GS
Powered by Regen Genetics

Sire **G**

Lees Cowboy Up 7136

BD: 3/10/2017 AAA #18924408
 GEN: Angus GS

HA OUTSIDE 3008
HA COWBOY UP 5405
 HA BLACKCAP LADY 1602

KG SOLUTION 0018
 HA EVER LADY 1575
 SITZ UPWARD 307R
 HA BLACKCAP LADY 5515

\$W
45
\$F
46
\$G
22
\$B
68
C
132

CROOK MT REALLY WINDY 141
PAULA 187 141 LAR
 PAULA 187 LAR

A A R REALLY WINDY 1205
 REVOLUTION 155 OF CROOK MT
 KMK ALLIANCE 6595 I87
 SODAK PAULA 6139-96

CED	BW	WW	YW	MILK	CW	MARB	RE	FAT
5	.6	52	97	22	8	.14	-.03	-.045

ANGUS GS
Powered by Regen Genetics

SALE REPRESENTATIVES

Scott Dirk
 Tri-State Livestock News
 605-380-6024

Kirby Goettsch
 Farm & Ranch Guide
 605-226-8925 or 380-3939 (cell phone)

Vern Frey
 Frey Livestock Sales & Service
 701-721-0344

SALE BULLS

Lot **1**

Lees Resilient 3178

BD: 3/30/23

AAA #*20923518



SITZ STELLAR 726D
SITZ RESILIENT 10208
SITZ MISS BURGESS 1856

MOHNEN SUBSTANTIAL 272
SITZ PRIDE 200B
SITZ TOP GAME 561X
SITZ MISS BURGESS 4381

HA COWBOY UP 5405
PAULA 7213 LAR
PAULA 284 LAR

HA OUTSIDE 3008
HA BLACKCAP LADY 1602
RR CIGAR 7151
PAULA 187 LAR

\$W	85
\$F	95
\$G	64
\$B	160
\$C	295

BW	205	Ratio	365	Ratio	SC EPD	HP	Dam's Ratio	
92	749	121	1323	121	1.16	3.82	5/106	
CED	BW	WW	YW	MILK	CW	MARB	RE	FAT
0	3.1	92	157	33	63	.76	.85	-.027

ANGUSGS
Powered by Regen Genetics



Lot **2**

Lees Coalition 3162

BD: 3/27/23

AAA #*20923510

HF SYNDICATE 213Z
U-2 COALITION 206C
U2 ERELITE 109Z

CONNEALY CONSENSUS 7229
HF MISS BLACKCAP 27R
YOUNG DALE XCLUSIVE 25X
U-2 ERELITE 1X

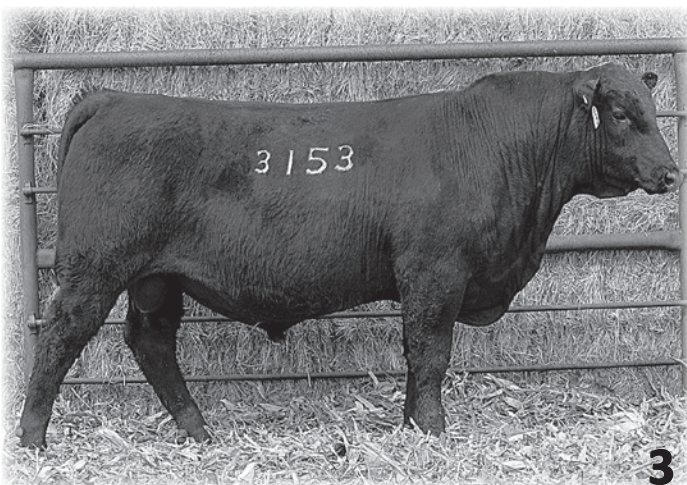
N BAR EMULATION EXT
PAULA LEAD 7165 LAR
PAULA LEAD 725 LAR

EMULATION N BAR 5522
N BAR PRIMROSE 2424
CONNEALY LEAD ON
SODAK PAULA 6139-96

\$W	76
\$F	86
\$G	48
\$B	135
\$C	240

BW	205	Ratio	365	Ratio	SC EPD	HP	Dam's Ratio	
81	696	112	1214	110	1.03	3.4	4/98	
CED	BW	WW	YW	MILK	CW	MARB	RE	FAT
13	-.6	64	119	43	48	.62	.40	+.010

ANGUSGS
Powered by Regen Genetics



Lot **3**

Lees Resilient 3153

BD: 3/25/23

AAA #*20923505

SITZ STELLAR 726D
SITZ RESILIENT 10208
SITZ MISS BURGESS 1856

MOHNEN SUBSTANTIAL 272
SITZ PRIDE 200B
SITZ TOP GAME 561X
SITZ MISS BURGESS 4381

S A V BISMARCK 5682
PAULA LEAD 5145 LAR
PAULAS LEAD 163 LAR

G A R GRID MAKER
S A V ABIGALE 0451
RR CIGAR 7151
PAULA LEAD 917 LAR

\$W	85
\$F	84
\$G	46
\$B	130
\$C	262

BW	205	Ratio	365	Ratio	SC EPD	HP	Dam's Ratio	
86	684	109	1194	109	.66	3.35	7/104	
CED	BW	WW	YW	MILK	CW	MARB	RE	FAT
7	.1	75	132	40	48	.57	.48	.021

ANGUSGS
Powered by Regen Genetics

Lot **4**

Lees Resilient 3148

BD: 3/24/23

AAA #*20923502



SITZ STELLAR 726D
SITZ RESILIENT 10208
 SITZ MISS BURGESS 1856

MOHNEN SUBSTANTIAL 272
 SITZ PRIDE 200B
 SITZ TOP GAME 561X
 SITZ MISS BURGESS 4381

\$W	75
\$F	95
\$G	84
\$B	179
\$C	319

R/M TURNING POINT 1C94
SHOBANDO 5140 LAR
 SHOBANDA 906 LAR

CONNEALY CONSENSUS 7229
 R/M RITA 9691
 CONNEALY LEAD ON
 SHOBANDA 708 LAR

BW	205	Ratio	365	Ratio	SC EPD	HP	Dam's Ratio	
76	658	106	1210	110	.10	3.6	7/104	
CED	BW	WW	YW	MILK	CW	MARB	RE	FAT
10	-1.1	69	123	29	54	1.27	.56	.009

ANGUSGS
Powered by Regen Genetics



Lot **5**

Lees Cowboy Up 3206

BD: 4/14/23

AAA #*20923529

HA COWBOY UP 5405
LEES COWBOY UP 7136
 PAULA I87 141 LAR

HA OUTSIDE 3008
 HA BLACKCAP LADY 1602
 CROOK MT REALLY WINDY 141
 PAULA I87 LAR

\$W	47
\$F	57
\$G	29
\$B	86
\$C	152

APEX WINDY 078
PAULAS RIGHT TIME 6171 LAR
 PAULAS RIGHT TIME 741 LAR

H A R B WINDY 702 JH
 APEXETTE LUCY 6037
 LEACHMAN RIGHT TIME
 SODAK PAULA 6139-96

BW	205	Ratio	365	Ratio	SC EPD	HP	Dam's Ratio	
108	678	109	1124	102	.87	2.95	6/98	
CED	BW	WW	YW	MILK	CW	MARB	RE	FAT
-8	4.3	62	105	23	26	.22	.28	-.025

ANGUSGS
Powered by Regen Genetics



Lot **6**

Lees Stellar 3186

BD: 4/03/23

AAA #*20923522

MOHNEN SUBSTANTIAL 272
SITZ STELLAR 726D
 SITZ PRIDE 200B

BENFIELD SUBSTANCE 8506
 MOHNEN GLYN MAWR ELBA 1758
 CONNEALY FINAL PRODUCT
 SITZ PRIDE 308Y

\$W	59
\$F	89
\$G	41
\$B	129
\$C	230

APEX WINDY 078
PAULAS TIME 7173 LAR
 PAULAS RIGHT TIME 741 LAR

H A R B WINDY 702 JH
 APEXETTE LUCY 6037
 LEACHMAN RIGHT TIME
 SODAK PAULA 6139-96

BW	205	Ratio	365	Ratio	SC EPD	HP	Dam's Ratio	
98	700	113	1178	107	.39	3.15	5/103	
CED	BW	WW	YW	MILK	CW	MARB	RE	FAT
-4	3.4	68	114	26	50	.51	.48	.047

ANGUSGS
Powered by Regen Genetics





Lot **8**

Lees Coalition 3195

BD: 4/11/23

AAA #*20923524

HF SYNDICATE 213Z
U-2 COALITION 206C
 U2 ERELITE 109Z

CONNEALY CONSENSUS 7229
 HF MISS BLACKCAP 27R
 YOUNG DALE XCLUSIVE 25X
 U-2 ERELITE 1X

\$W
55
\$F
66
\$G
42
\$B
109
\$C
210

CONNEALY CONSENSUS 7229
PAULAS RIGHT TIME 6188 LAR
 PAULAS RIGHT TIME 741 LAR

CONNEALY CONSENSUS
 BLUE LILLY OF CONANGA 16
 LEACHMAN RIGHT TIME
 SODAK PAULA 6139-96

BW	205	Ratio	365	Ratio	SC EPD	HP	Dam's Ratio	
103	688	111	1154	105	.48	3.06	5/100	
CED	BW	WW	YW	MILK	CW	MARB	RE	FAT
-2	3.9	61	112	32	33	.45	.52	-.003

ANGUSGS
 Powered by Regen Genetics



VITAFERM®

WITH THE AMAFERM® ADVANTAGE

“Feeding VitaFerm has helped our conception rates and the fertility of our bulls.”

— Bob White

For more information visit
www.vitaferm.com

Lot **9**

Lees Cowboy Up 3183

BD: 4/01/23

AAA #20923521

HA COWBOY UP 5405
LEES COWBOY UP 7136
 PAULA I87 141 LAR

HA OUTSIDE 3008
 HA BLACKCAP LADY 1602
 CROOK MT REALLY WINDY 141
 PAULA I87 LAR

\$W
52
\$F
70
\$G
16
\$B
86
\$C
174

EXAR UPSHOT 0562B
ALICIA 4145 LAR
 ALICIA RT 620 LAR

SITZ UPWARD 307R
 EXAR BARBARA T020
 LEACHMAN RIGHT TIME
 ALICIA 6122 401 LAR

BW	205	Ratio	365	Ratio	SC EPD	HP	Dam's Ratio	
80	671	108	1157	105	.46	3.19	7/103	
CED	BW	WW	YW	MILK	CW	MARB	RE	FAT
11	-.1	52	95	26	34	.08	.29	.046

ANGUSGS
 Powered by Regen Genetics





Lot **10**

Lees Bomber SHL 316

BD: 4/23/23

AAA #*20923491

CASINO BOMBER N33
LEES BOMBER 0184
 SHOABANDO 145 LAR

KM BROKEN BOW 002
 CASINO ANNIE K48
 R C BLACK CIGAR 0293
 SHOABANDO 878 405 LAR

\$W
66
\$F
75
\$G
28
\$B
104
\$C
204

A A R FRONTMAN 3132
PAULA 0189 LAR
 PAULA 4159 LAR

APEX FRONTMAN 081
 A A R BLACKBIRD 9044
 A A R TEN X 7008 S A
 PAULA 934 LAR

BW	205	Ratio	365	Ratio	SC EPD	HP	Dam's Ratio	
86	703	113	1138	103	-.24	2.86	2/111	
CED	BW	WW	YW	MILK	CW	MARB	RE	FAT
8	.4	64	104	25	38	.40	.07	.061

ANGUSGS
Powered by Regen Genetics

Lot **11**

Lees Resilient 3160

BD: 3/26/23

AAA #*20923509

SITZ STELLAR 726D
SITZ RESILIENT 10208
 SITZ MISS BURGESS 1856

MOHNEN SUBSTANTIAL 272
 SITZ PRIDE 200B
 SITZ TOP GAME 561X
 SITZ MISS BURGESS 4381

\$W
74
\$F
85
\$G
45
\$B
130
\$C
260

EXAR UPSHOT 0562B
ALICIA 6198 LAR
 ALICIA 801 LAR

SITZ UPWARD 307R
 EXAR BARBARA T020
 CROOK MT REALLY WINDY 141
 ALICIA 41-93 603 LAR

BW	205	Ratio	365	Ratio	SC EPD	HP	Dam's Ratio	
93	654	105	1185	108	.87	3.47	6/102	
CED	BW	WW	YW	MILK	CW	MARB	RE	FAT
5	2	82	137	22	47	.50	.66	.018

ANGUSGS
Powered by Regen Genetics

DVAuction

www.dvauction.com

Watch & Bid online for FREE!

Can't make the sale?
 Let DVAuction bring the sale to you!

Busy during the sale?
 Let DVAuction represent your bid!

Visit www.dvauction.com & Register!

**High Speed Internet Access Required*

Lot **12**

Lees Stellar SHL 308

BD: 3/27/23

AAA #*20923485

MOHNEN SUBSTANTIAL 272
SITZ STELLAR 726D
 SITZ PRIDE 200B

BENFIELD SUBSTANCE 8506
 MOHNEN GLYN MAWR ELBA 1758
 CONNEALY FINAL PRODUCT
 SITZ PRIDE 308Y

\$W
64
\$F
85
\$G
55
\$B
140
\$C
260

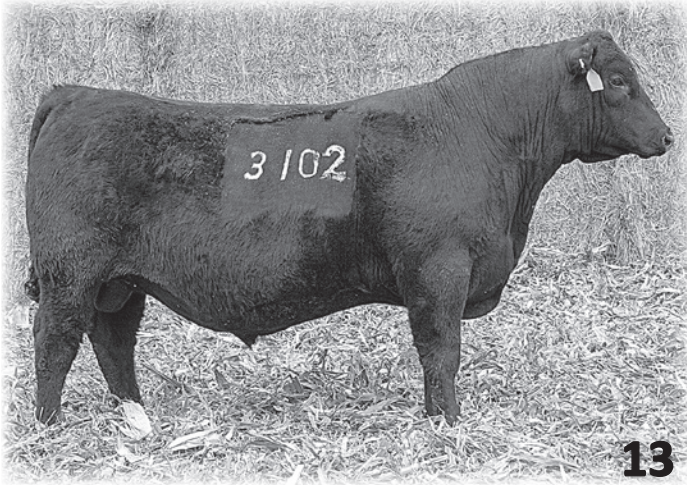
R/M TURNING POINT 1C94
ERICA 501 SHL LAR
 ERICA 3112 LAR

CONNEALY CONSENSUS 7229
 R/M RITA 9691
 HA BISMARCK 1666
 ERICA 027 LAR

BW	205	Ratio	365	Ratio	SC EPD	HP	Dam's Ratio	
91	618	100	1127	103	.31	3.32	6/101	
CED	BW	WW	YW	MILK	CW	MARB	RE	FAT
5	2.3	71	122	23	52	.86	.37	.073

ANGUSGS
Powered by Regen Genetics





Lot **13**

Lees Frontman 3102

BD: 3/07/23

AAA #*20923496

APEX FRONTMAN 081
A A R FRONTMAN 3132
 A A R BLACKBIRD 9044

KESSLERS FRONTMAN R001
 APEXETTE PRIDE 9067
 B C MATRIX 4132
 A A R BLACKBIRD 7026

LEES JUSTIFIED 9116
SHOBANDA 1194 LAR
 SHOANDA 320 LAR

KG JUSTIFIED 3023
 PAULA 7204 LAR
 A A R TEN X 7008 S A
 SHOBANDA 906 LAR

\$W
75
\$F
109
\$G
48
\$B
157
\$C
281

BW	205	Ratio	365	Ratio	SC EPD	HP	Dam's Ratio	
74	622	102	1236	108	1.56	3.97	1/102	
CED	BW	WW	YW	MILK	CW	MARB	RE	FAT
16	-1.7	71	137	35	59	.54	.72	.012

ANGUSGS
Powered by Regen Genetics

Lot **14**

Lees Coalition 3157

BD: 3/26/23

AAA #*20923507

HF SYNDICATE 213Z
U-2 COALITION 206C
 E2 ERELITE 109Z

CONNELLY CONSENSUS 7229
 HF MISS BLACKCAP 27R
 YOUNG DALE XCLUSIVE 25X
 U-2 ERELITE 1X

R/M TURNING POINT 1C94
ALICIA 6112 LAR
 ALICIA 4176 LAR

CONNELLY CONSENSUS 7229
 R/M RITA 9691
 EXAR UPSHOT 0562B
 ALICIA 801 LAR

\$W
63
\$F
81
\$G
45
\$B
126
\$C
248

BW	205	Ratio	365	Ratio	SC EPD	HP	Dam's Ratio	
66	635	102	1131	103	.41	3.28	6/99	
CED	BW	WW	YW	MILK	CW	MARB	RE	FAT
15	-.3	61	108	27	39	.60	.36	.032

ANGUSGS
Powered by Regen Genetics



Lot **15**

Lees Coalition 3181

BD: 4/01/23

AAA #*20923520

HF SYNDICATE 213Z
U-2 COALITION 206C
 E2 ERELITE 109Z

CONNELLY CONSENSUS 7229
 HF MISS BLACKCAP 27R
 YOUNG DALE XCLUSIVE 25X
 U-2 ERELITE 1X

A A R TEN X 7008 S A
PAULA 5132 LAR
 PAULA 018 LAR

MYTTY IN FOCUS
 A A R LADY KELTON 5551
 CROOK MT REALLY WINDY 141
 PAULA LEAD 725 LAR

\$W
65
\$F
80
\$G
30
\$B
110
\$C
219

BW	205	Ratio	365	Ratio	SC EPD	HP	Dam's Ratio	
89	632	102	1142	104	.77	3.34	7/96	
CED	BW	WW	YW	MILK	CW	MARB	RE	FAT
6	1.7	66	119	28	39	.28	.20	-.010

ANGUSGS
Powered by Regen Genetics



Lot **16**

Lees Coalition 3185

BD: 4/02/23

AAA #*20924752

HF SYNDICATE 213Z
U-2 COALITION 206C
 E2 ERELITE 109Z

CONNEALY CONSENSUS 7229
 HF MISS BLACKCAP 27R
 YOUNG DALE XCLUSIVE 25X
 U-2 ERELITE 1X

N BAR EMULATION EXT
PAULA LEAD 5163 LAR
 PAULA LEAD 725 LAR

EMULATION N BAR 5522
 N BAR PRIMROSE 2424
 CONNEALY LEAD ON
 SODAK PAULA 6139-96

\$W	49
\$F	103
\$G	43
\$B	146
\$C	235

BW	205	Ratio	365	Ratio	SC EPD	HP	Dam's Ratio	
80	631	102	1151	105	.83	3.31	7/101	
CED	BW	WW	YW	MILK	CW	MARB	RE	FAT
6	2.7	58	115	29	50	.38	.69	-.023

ANGUSGS
Powered by Regen Genetics



Lot **17**

Lees Coalition 3165

BD: 3/27/23

AAA #20923512

HF SYNDICATE 213Z
U-2 COALITION 206C
 E2 ERELITE 109Z

CONNEALY CONSENSUS 7229
 HF MISS BLACKCAP 27R
 YOUNG DALE XCLUSIVE 25X
 U-2 ERELITE 1X

A A R COUNSELOR 5546
PAULA 7104 LAR
 PAULA 5126 LAR

CONNEALY COUNSELOR
 A A R AIRY PRIMROSE 9595
 A A R TEN X 7008 S A
 PAULA 072 LAR

\$W	67
\$F	80
\$G	50
\$B	131
\$C	237

BW	205	Ratio	365	Ratio	SC EPD	HP	Dam's Ratio	
88	636	102	1187	107	1.35	3.56	5/101	
CED	BW	WW	YW	MILK	CW	MARB	RE	FAT
8	.9	63	107	30	39	.65	.43	.012

ANGUSGS
Powered by Regen Genetics



Lot **18**

Lees Frontman 3113

BD: 3/12/23

AAA #*20923498

APEX FRONTMAN 081
A A R FRONTMAN 3132
 A A R BLACKBIRD 9044

KESSLERS FRONTMAN R001
 APEXETTE PRIDE 9067
 B C MATRIX 4132
 A A R BLACKBIRD 7026

LESS COWBOY UP 1036
PAULAS TIME 1201 LAR
 PAULA TIME 8113 LAR

HA COWBOY UP 5405
 PAULA I87 141 LAR
 A A R FRONTMAN 3132
 PAULAS RIGHT TIME 6190 LAR

\$W	81
\$F	94
\$G	23
\$B	117
\$C	242

BW	205	Ratio	365	Ratio	SC EPD	HP	Dam's Ratio	
94	621	101	1183	103	1.13	3.65	1/101	
CED	BW	WW	YW	MILK	CW	MARB	RE	FAT
5	1.4	74	126	35	57	.13	.47	.027

ANGUSGS
Powered by Regen Genetics

Lot **19**

Lees Coalition 3168

BD: 3/28/23

AAA #*20923513

HF SYNDICATE 213Z
U-2 COALITION 206C
E2 ERELITE 109Z

CONNEALY CONSENSUS 7229
HF MISS BLACKCAP 27R
YOUNG DALE XCLUSIVE 25X
U-2 ERELITE 1X

HA COWBOY UP 5405
ERICA 8142 LAR
ERICA 4108 LAR

HA OUTSIDE 3008
HA BLACKCAP LADY 1602
S A V BISMARCK 5682
ERICA 262 LAR

\$W
56
\$F
87
\$G
41
\$B
128
\$C
240

BW	205	Ratio	365	Ratio	SC EPD	HP	Dam's Ratio	
91	612	99	1201	110	.95	3.82	3/90	
CED	BW	WW	YW	MILK	CW	MARB	RE	FAT
5	3.2	74	133	17	44	.33	.67	-.043

ANGUSGS
Powered by Regen Genetics



Lot **20**

Lees Bomber SHL 314

BD: 4/18/23

AAA #*20923490

CASINO BOMBER N33
LEES BOMBER 0184
SHOBANDO 145 LAR

KM BROKEN BOW 002
CASINO ANNIE K48
R C BLACK CIGAR 0293
SHOBANDO 878 405 LAR

KG JUSTIFIED 3023
TRAVETTE 001 SHL LAR
TRAVETTE 801 SHL LAR

CONNEALY JUDGMENT
KG MISS MAGIC 1443
DIAMOND IN THE ROUGH
TRAVETTE 356 SHL LAR

\$W
61
\$F
105
\$G
48
\$B
153
\$C
255

BW	205	Ratio	365	Ratio	SC EPD	HP	Dam's Ratio	
76	706	114	1026	93	1.21	2.15	2/105	
CED	BW	WW	YW	MILK	CW	MARB	RE	FAT
11	1.9	79	124	11	62	.60	.52	.024

ANGUSGS
Powered by Regen Genetics

Lot **21**

Lees Bomber SHL 313

BD: 4/17/23

AAA #*20923489

CASINO BOMBER N33
LEES BOMBER 0184
SHOBANDO 145 LAR

KM BROKEN BOW 002
CASINO ANNIE K48
R C BLACK CIGAR 0293
SHOBANDO 878 405 LAR

KG JUSTIFIED 3023
ALICIA 0145 LAR
ALICIA 6112 LAR

CONNEALY JUDGMENT
KG MISS MAGIC 1443
R/M TURNING POINT 1C94
ALICIA 4176 LAR



\$W
65
\$F
83
\$G
68
\$B
151
\$C
275

BW	205	Ratio	365	Ratio	SC EPD	HP	Dam's Ratio	
87	696	112	1080	98	.33	2.55	2/103	
CED	BW	WW	YW	MILK	CW	MARB	RE	FAT
4	2.9	75	120	19	47	1.19	.30	.105

ANGUSGS
Powered by Regen Genetics

Lot **22**

Lees Frontman 3116

BD: 3/15/23

AAA #*20923499

APEX FRONTMAN 081
A A R FRONTMAN 3132
A A R BLACKBIRD 9044

KESSLERS FRONTMAN R001
APEXETTE PRIDE 9067
B C MATRIX 4132
A A R BLACKBIRD 7026

LEES JUSTIFIED 9116
PAULAS DESIGN 1199 LAR
PAULAS DESIGN 347 LAR

KG JUSTIFIED 3023
PAULA 7204 LAR
S A V BISMARCK 5682
PAULAS DESIGN 878 742 LAR

\$W
64
\$F
103
\$G
28
\$B
131
\$C
229

BW	205	Ratio	365	Ratio	SC EPD	HP	Dam's Ratio	
84	646	106	1134	99	1.01	3.19	1/106	
CED	BW	WW	YW	MILK	CW	MARB	RE	FAT
7	.8	72	129	22	59	.39	.08	.060

ANGUSGS
Powered by Regen Genetics





Lot **23**

Lees Bomber SJL 325

BD: 4/12/23

AAA #*20923493

CASINO BOMBER N33
LEES BOMBER 0184
 SHOABANDO 145 LAR

KM BROKEN BOW 002
 CASINO ANNIE K48
 R C BLACK CIGAR 0293
 SHOABANDO 878 405 LAR

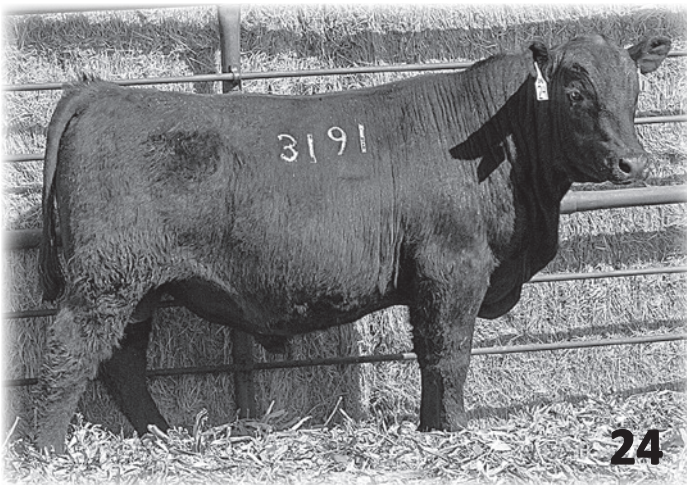
A A R COUNSELOR 5546
AMANDA 024 SJL LAR
 AMANDA 109 LAR

CONNELY COUNSELOR
 A A R AIRY PRIMROSE 9595
 WILLEKES CONVERTER 4402-9
 ROSIE SIS 812 LAR

\$W	55
\$F	102
\$G	36
\$B	138
\$C	237

BW	205	Ratio	365	Ratio	SC EPD	HP	Dam's Ratio	
79	646	104	1102	100	1.27	2.98	2/103	
CED	BW	WW	YW	MILK	CW	MARB	RE	FAT
13	-.7	56	102	25	51	.31	.71	.014

ANGUSGS
Powered by Regen Genetics



Lot **24**

Lees Bomber 3191

BD: 4/07/23

AAA #*20923528

CASINO BOMBER N33
LEES BOMBER 0184
 SHOABANDO 145 LAR

KM BROKEN BOW 002
 CASINO ANNIE K48
 R C BLACK CIGAR 0293
 SHOABANDO 878 405 LAR

H A IMAGE MAKER 0415
PAULA 0106 LAR
 PAULA 8115 LAR

HERO 6267 OF R R 2418
 H A RITO BLACKCAP 9038
 DIAMOND IN THE ROUGH
 PAULA 6131 LAR

\$W	70
\$F	82
\$G	28
\$B	110
\$C	204

BW	205	Ratio	365	Ratio	SC EPD	HP	Dam's Ratio	
80	641	103	1068	97	.64	2.81	2/101	
CED	BW	WW	YW	MILK	CW	MARB	RE	FAT
15	.1	68	116	27	49	.28	.44	.054

ANGUSGS
Powered by Regen Genetics

Lot **25**

Lees Resilient 3152

BD: 3/25/23

AAA #*20923504

SITZ STELLAR 726D
SITZ RESILIENT 10208
 SITZ MISS BURGESS 1856

MOHNEN SUBSTANTIAL 272
 SITZ PRIDE 200B
 SITZ TOP GAME 561X
 SITZ MISS BURGESS 4381

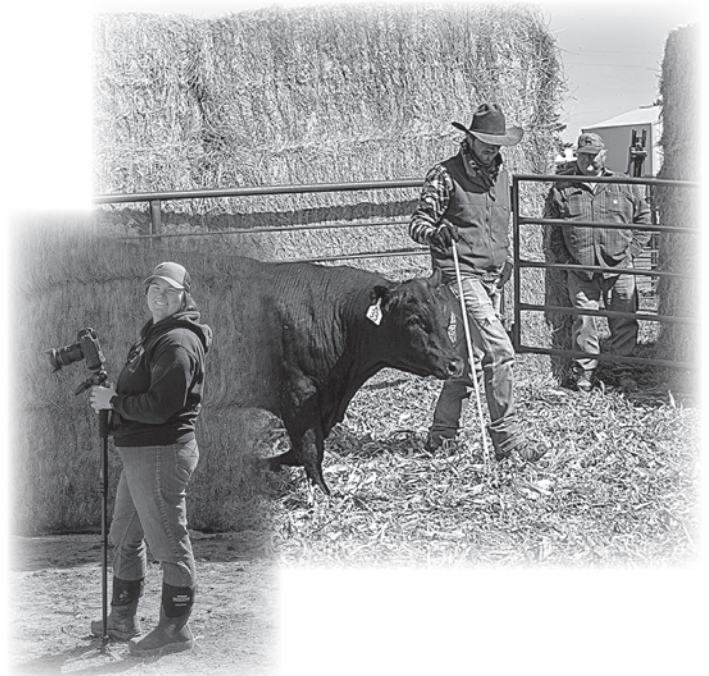
APEX WINDY 078
ISABELLA 6125 LAR
 ISABELLA 005 LAR

H A R B WINDY 702 JH
 APEXETTE LUCY 6037
 H A IMAGE MAKER 0415
 ISABELLA 2106 LAR

\$W	81
\$F	61
\$G	43
\$B	104
\$C	220

BW	205	Ratio	365	Ratio	SC EPD	HP	Dam's Ratio	
94	638	103	1084	99	1.59	2.93	6/98	
CED	BW	WW	YW	MILK	CW	MARB	RE	FAT
2	2.3	89	135	22	38	.42	.60	-.015

ANGUSGS
Powered by Regen Genetics



Lot **26**

Lees Cowboy Up 3219

BD: 4/23/23

AAA #*20923532

HA COWBOY UP 5405
LEES COWBOY UP 7136
PAULA I87 141 LAR

HA OUTSIDE 3008
HA BLACKCAP LADY 1602
CROOK MT REALLY WINDY 141
PAULA I87 LAR

DIAMOND IN THE ROUGH
PAULA 7152 LAR
PAULA 361 LAR

DIAMOND JUSTICE 901S
DIAMOND BLACK LADY 7206
KESSLERS FRONTMAN R001
PAULA 914 LAR

\$W
53
\$F
60
\$G
26
\$B
85
\$C
179

BW	205	Ratio	365	Ratio	SC EPD	HP	Dam's Ratio	
94	585	94	1108	101	1.56	3.40	5/98	
CED	BW	WW	YW	MILK	CW	MARB	RE	FAT
1	2.4	56	97	24	22	.12	.30	-.042

ANGUSGS
Powered by Regen Genetics



Lot **27**

Lees Bomber 3217

BD: 4/18/23

AAA #*20923531

CASINO BOMBER N33
LEES BOMBER 0184
SHOBANDO 145 LAR

KM BROKEN BOW 002
CASINO ANNIE K48
R C BLACK CIGAR 0293
SHOBANDO 878 405 LAR

A A R FRONTMAN 3132
SHOBANDO 0153 LAR
SHOBANDO 5141 LAR

APEX FRONTMAN 081
A A R BLACKBIRD 9044
APEX WINDY 078
SHOBADA 070 LAR

\$W
67
\$F
92
\$G
37
\$B
129
\$C
241

BW	205	Ratio	365	Ratio	SC EPD	HP	Dam's Ratio	
75	613	99	1096	100	.78	3.15	2/104	
CED	BW	WW	YW	MILK	CW	MARB	RE	FAT
16	-1.1	65	115	26	52	.45	.40	.044

ANGUSGS
Powered by Regen Genetics

Lot **28**

Lees Resilent SHL 309

BD: 3/28/23

AAA #*20923486

SITZ STELLAR 726D
SITZ RESILIENT 10208
SITZ MISS BURGESS 1856

MOHNEN SUBSTANTIAL 272
SITZ PRIDE 200B
SITZ TOP GAME 561X
SITZ MISS BURGESS 4381

HA COWBOY UP 5405
TRAVETTE 707 SHL LAR
TRAVETTE 021 SHL LAR

HA OUTSIDE 3008
HA BLACKCAP LADY 1602
CROOK MT REALLY WINDY 141
TRAVETTE 814 SHL LAR

\$W
81
\$F
83
\$G
35
\$B
119
\$C
241

BW	205	Ratio	365	Ratio	SC EPD	HP	Dam's Ratio	
82	617	99	1052	96	2.38	2.86	5/89	
CED	BW	WW	YW	MILK	CW	MARB	RE	FAT
9	-.2	80	133	25	49	.43	.42	.052

ANGUSGS
Powered by Regen Genetics





Lot **29**

Lees Bomber 3201

BD: 4/14/23

AAA #*20923527

CASINO BOMBER N33
LEES BOMBER 0184
SHOBANDO 145 LAR

KM BROKEN BOW 002
CASINO ANNIE K48
R C BLACK CIGAR 0293
SHOBANDO 878 405 LAR

KMK ALLIANCE 6595 I87
ERICA 0167 LAR
ERICA 4108 LAR

SITZ ALLIANCE 6595
G A R EXT 916
S A V BISMARCK 5682
ERICA 262 LAR

\$W
76
\$F
107
\$G
36
\$B
142
\$C
251

BW	205	Ratio	365	Ratio	SC EPD	HP	Dam's Ratio	
84	617	99	1107	101	.38	3.19	2/97	
CED	BW	WW	YW	MILK	CW	MARB	RE	FAT
7	2.4	79	131	28	61	.51	.19	.062

ANGUSGS
Powered by Regen Genetics



Lot **30**

Lees Bomber 3209

BD: 4/15/23

AAA #*20923530

CASINO BOMBER N33
LEES BOMBER 0184
SHOBANDO 145 LAR

KM BROKEN BOW 002
CASINO ANNIE K48
R C BLACK CIGAR 0293
SHOBANDO 878 405 LAR

A A R COUNSELOR 5546
ALICAI FORESIGHT 0216 LAR
ALICIA FORESIGHT 5142 LAR

CONNEALY COUNSELOR
A A R AIRY PRIMROSE 9595
S A V BISMARCK 5682
ALICIAS FORESIGHT 714 LAR

\$W
67
\$F
86
\$G
47
\$B
134
\$C
249

BW	205	Ratio	365	Ratio	SC EPD	HP	Dam's Ratio	
60	608	98	1144	104	1.15	3.50	2/107	
CED	BW	WW	YW	MILK	CW	MARB	RE	FAT
14	-2.4	60	106	26	45	.78	.06	.066

ANGUSGS
Powered by Regen Genetics



Lot **31**

Lees Stellar 3139

BD: 3/20/23

AAA #*20923501

MOHNEN SUBSTANTIAL 272
SITZ STELLAR 726D
SITZ PRIDE 200B

BENFIELD SUBSTANCE 8506
MOHNEN GLYN MAWR ELBA 1758
CONNEALY FINAL PRODUCT
SITZ PRIDE 308Y

BASIN EXCITEMENT
ALICIA 7181 LAR
ALICIA 801 LAR

BASIN EXPEDITION R156
BASIN LADY S532 AK
CROOK MT REALLY WINDY 141
ALICIA 41-93 603 LAR

\$W
71
\$F
82
\$G
36
\$B
117
\$C
228

BW	205	Ratio	365	Ratio	SC EPD	HP	Dam's Ratio	
76	579	93	1115	101	1.20	3.48	5/98	
CED	BW	WW	YW	MILK	CW	MARB	RE	FAT
12	.2	74	131	27	47	.52	.22	.074

ANGUSGS
Powered by Regen Genetics



Lot **32**

Lees Frontman 3112

BD: 3/11/23

AAA #*20923497

APEX FRONTMAN 081
A A R FRONTMAN 3132
 A A R BLACKBIRD 9044

KESSLERS FRONTMAN R001
 APEXETTE PRIDE 9067
 B C MATRIX 4132
 A A R BLACKBIRD 7026

SITZ STELLAR 726D
SHOBANDA 1161 LAR
 SHOBANDO 145 LAR

MOHNEN SUBSTANTIAL 272
 SITZ PRIDE 200B
 R C BLACK CIGAR 0293
 SHOBANDO 878 405 LAR

\$W
81
\$F
105
\$G
12
\$B
117
\$C
247

BW	205	Ratio	365	Ratio	SC EPD	HP	Dam's Ratio	
77	614	100	1088	95	.43	3.10	1/100	
CED	BW	WW	YW	MILK	CW	MARB	RE	FAT
7	-1.2	68	127	39	62	-.05	.48	.050

ANGUSGS
Powered by Regen Genetics



Lot **33**

Lees Resilent SHL 307

BD: 3/27/23

AAA #*20923484

SITZ STELLAR 726D
SITZ RESILIENT 10208
 SITZ MISS BURGESS 1856



MOHNEN SUBSTANTIAL 272
 SITZ PRIDE 200B
 SITZ TOP GAME 561X
 SITZ MISS BURGESS 4381

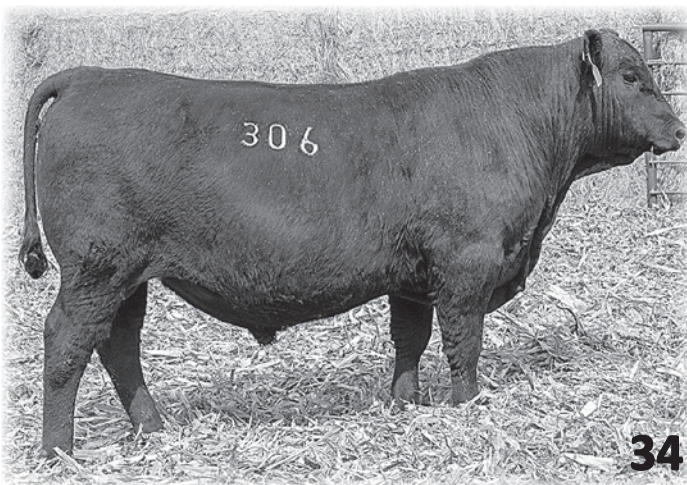
RR CIGAR 7151
TRAVETTE 073 SHL LAR
 TRAVETTE 811 LAR

R C BLACK CIGAR 0293
 RR BLACKCAP 4752
 CONNEALY LEAD ON
 TRAVETTE 524 SHL LAR

\$W
55
\$F
77
\$G
57
\$B
134
\$C
225

BW	205	Ratio	365	Ratio	SC EPD	HP	Dam's Ratio	
83	608	98	1059	96	.88	2.96	12/105	
CED	BW	WW	YW	MILK	CW	MARB	RE	FAT
5	1.8	68	115	17	39	.65	.72	-.024

ANGUSGS
Powered by Regen Genetics



Lot **34**

Lees Stellar SHL306

BD: 3/27/23

AAA #*20923483

MOHNEN SUBSTANTIAL 272
SITZ STELLAR 726D
 SITZ PRIDE 200B

BENFIELD SUBSTANCE 8506
 MOHNEN GLYN MAWR ELBA 1758
 CONNEALY FINAL PRODUCT
 SITZ PRIDE 308Y

A A R COUNSELOR 5546
TRAVETTE 909 SHL LAR
 TRAVETTE 021 SHL LAR

CONNEALY COUNSELOR
 A A R AIRY PRIMROSE 9595
 CROOK MT REALLY WINDY 141
 TRAVETTE 814 SHL LAR

\$W
58
\$F
89
\$G
51
\$B
140
\$C
252

BW	205	Ratio	365	Ratio	SC EPD	HP	Dam's Ratio	
86	611	98	1062	96	1.90	2.96	1/98	
CED	BW	WW	YW	MILK	CW	MARB	RE	FAT
1	1.1	73	132	18	50	.81	.08	.038

ANGUSGS
Powered by Regen Genetics

Lot **35**

Lees Resilent 3176

BD: 3/29/23

AAA #*20923517

SITZ STELLAR 726D
SITZ RESILIENT 10208
 SITZ MISS BURGESS 1856

MOHNEN SUBSTANTIAL 272
 SITZ PRIDE 200B
 SITZ TOP GAME 561X
 SITZ MISS BURGESS 4381

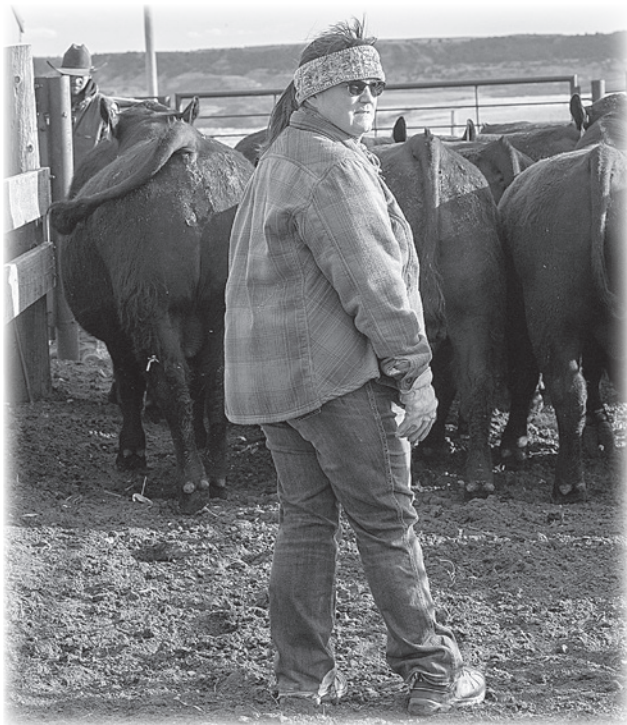
DIAMOND IN THE ROUGH
ALICIA 7167 LAR
 ALICIA 228 LAR

DIAMOND JUSTICE 901S
 DIAMOND BLACK LADY 7206
 HA PROGRAM 5652
 ALICIA RIGHT TIME 202 LAR

\$W	66
\$F	68
\$G	52
\$B	120
\$C	239

BW	205	Ratio	365	Ratio	SC EPD	HP	Dam's Ratio	
84	606	98	1033	94	1.32	2.75	5/96	
CED	BW	WW	YW	MILK	CW	MARB	RE	FAT
2	1.6	60	98	33	35	.68	.40	-.001

ANGUSGS
Powered by Regen Genetics



Lot **36**

Lees Resilent 3163

BD: 3/27/23

AAA #*20923511

SITZ STELLAR 726D
SITZ RESILIENT 10208
 SITZ MISS BURGESS 1856

MOHNEN SUBSTANTIAL 272
 SITZ PRIDE 200B
 SITZ TOP GAME 561X
 SITZ MISS BURGESS 4381

KG JUSTIFIED 3023
ALICIA 9136 LAR
 ALICIA 4160 LAR

CONNELY JUDGMENT
 KG MISS MAGIC 1443
 APEX WINDY 078
 ALICIA 6595 617 LAR

\$W	85
\$F	79
\$G	61
\$B	140
\$C	292

BW	205	Ratio	365	Ratio	SC EPD	HP	Dam's Ratio	
82	602	97	1028	94	1.23	2.70	3/99	
CED	BW	WW	YW	MILK	CW	MARB	RE	FAT
6	.6	74	121	35	46	.86	.51	.028

ANGUSGS
Powered by Regen Genetics

Lot **37**

Lees Resilent 3132

BD: 3/18/23

AAA #*20923500

SITZ STELLAR 726D
SITZ RESILIENT 10208
 SITZ MISS BURGESS 1856

MOHNEN SUBSTANTIAL 272
 SITZ PRIDE 200B
 SITZ TOP GAME 561X
 SITZ MISS BURGESS 4381

HA COMMANDER 4743
SHOBANDO 9167 LAR
 SHOBANDA 906 LAR

HA COMMANDER 2544
 HA BLACKCAP LADY 1545
 CONNEALY LEAD ON
 SHOBANDA 708 LAR

\$W	74
\$F	84
\$G	58
\$B	141
\$C	265

BW	205	Ratio	365	Ratio	SC EPD	HP	Dam's Ratio	
66	595	96	1064	97	.34	3.07	3/103	
CED	BW	WW	YW	MILK	CW	MARB	RE	FAT
12	-3.3	62	105	34	41	.76	.45	-.010

ANGUSGS
Powered by Regen Genetics





Lot **39**

Lees Coalition SHL 311

BD: 3/31/23

AAA #*20923487

HF SYNDICATE 213Z
U-2 COALITION 206C
 U2 ERELITE 109Z

CONNEALY CONSENSUS 7229
 HF MISS BLACKCAP 27R
 YOUNG DALE XCLUSIVE 25X
 U-2 ERELITE 1X

A A R FRONTMAN 3132
ERICA 906 SHL LAR
 ERICA 395 LAR

APEX FRONTMAN 081
 A A R BLACKBIRD 9044
 HA BISMARCK 1666
 ERICA 004 LAR

\$W	68
\$F	71
\$G	36
\$B	107
\$C	219

BW	205	Ratio	365	Ratio	SC EPD	HP	Dam's Ratio	
78	586	94	1074	98	.80	3.18	3/101	
CED	BW	WW	YW	MILK	CW	MARB	RE	FAT
9	1.0	55	108	42	36	.34	.36	-.021

ANGUSGS
Powered by Regen Genetics

Lot **40**

Lees Stellar 3179

BD: 3/31/23

AAA #*20923519

MOHNEN SUBSTANTIAL 272
SITZ STELLAR 726D
 SITZ PRIDE 200B

BENFIELD SUBSTANCE 8506
 MOHNEN GLYN MAWR ELBA 1758
 CONNEALY FINAL PRODUCT
 SITZ PRIDE 308Y

HA PRIME CUT 4493
PAULAS RIGHT TIME 9157 LAR
 PAULAS RIGHT TIME 6188 LAR

VERMILION SIRLOIN
 HA MISS BLACKCAP 9127
 CONNEALY CONSENSUS 7229
 PAULAS RIGHT TIME 741 LAR

\$W	73
\$F	101
\$G	49
\$B	150
\$C	247

BW	205	Ratio	365	Ratio	SC EPD	HP	Dam's Ratio	
87	573	92	1096	100	1.24	3.41	3/96	
CED	BW	WW	YW	MILK	CW	MARB	RE	FAT
2	2.4	72	131	35	55	.63	.55	.029

ANGUSGS
Powered by Regen Genetics



Lot **41**

Lees Coalition 3175

BD: 3/29/23

AAA #*20923516

HF SYNDICATE 213Z
U-2 COALITION 206C
 U2 ERELITE 109Z

CONNEALY CONSENSUS 7229
 HF MISS BLACKCAP 27R
 YOUNG DALE XCLUSIVE 25X
 U-2 ERELITE 1X

HA SAND STORM 3403
SHOBANDA 6225 LAR
 SHOBANDA 038 LAR

SITZ UPWARD 307R
 HA LASS 4206
 H A IMAGE MAKER 0415
 SHOBANDA 732 LAR

\$W	74
\$F	61
\$G	33
\$B	94
\$C	194

BW	205	Ratio	365	Ratio	SC EPD	HP	Dam's Ratio	
76	613	99	1117	102	1.51	3.29	6/102	
CED	BW	WW	YW	MILK	CW	MARB	RE	FAT
11	-.4	65	115	40	31	.45	-.01	.018

ANGUSGS
Powered by Regen Genetics



Lot **42**

Lees Coalition 3171

BD: 3/29/23

AAA #*20923514

HF SYNDICATE 213Z
U-2 COALITION 206C
 U2 ERELITE 109Z

CONNELLY CONSENSUS 7229
 HF MISS BLACKCAP 27R
 YOUNG DALE XCLUSIVE 25X
 U-2 ERELITE 1X

EXAR UPSHOT 0562B
ALICIA 6197 LAR
 ALICIA 801 LAR

SITZ UPWARD 307R
 EXAR BARBARA T020
 CROOK MT REALLY WINDY 141
 ALICIA 41-93 603 LAR

\$W
52
\$F
100
\$G
44
\$B
144
\$C
226

BW	205	Ratio	365	Ratio	SC EPD	HP	Dam's Ratio	
76	611	98	1121	102	.98	3.33	6/98	
CED	BW	WW	YW	MILK	CW	MARB	RE	FAT
5	1.9	65	124	22	54	.57	.33	.021

ANGUSGS
Powered by Sanger Genetics



Lot **43**

Lees Resilient 3172

BD: 3/29/23

AAA #*20923515

SITZ STELLAR 726D
SITZ RESILIENT 10208
 SITZ MISS BURGESS 1856

MOHNEN SUBSTANTIAL 272
 SITZ PRIDE 200B
 SITZ TOP GAME 561X
 SITZ MISS BURGESS 4381

HA COWBOY UP 5405
PAULAS TIME 7164 LAR
 PAULAS RIGHT TIME 741 LAR

HA OUTSIDE 3008
 HA BLACKCAP LADY 1602
 LEACHMAN RIGHT TIME
 SODAK PAULA 6139-96

\$W
64
\$F
80
\$G
30
\$B
110
\$C
227

BW	205	Ratio	365	Ratio	SC EPD	HP	Dam's Ratio	
92	606	98	1129	103	.49	3.42	5/105	
CED	BW	WW	YW	MILK	CW	MARB	RE	FAT
-1	2.2	68	119	26	40	.37	.18	.040

ANGUSGS
Powered by Sanger Genetics

Lot **44**

Lees Cowboy Up SJL 327

BD: 4/16/23

AAA #*20923494

HA COWBOY UP 5405
LEES COWBOY UP 7136
 PAULA I87 141 LAR

HA OUTSIDE 3008
 HA BLACKCAP LADY 1602
 CROOK MT REALLY WINDY 141
 PAULA I87 LAR

DIAMOND IN THE ROUGH
CLARA SIS 718 SJL LAR
 CLARA SIS 909 LAR

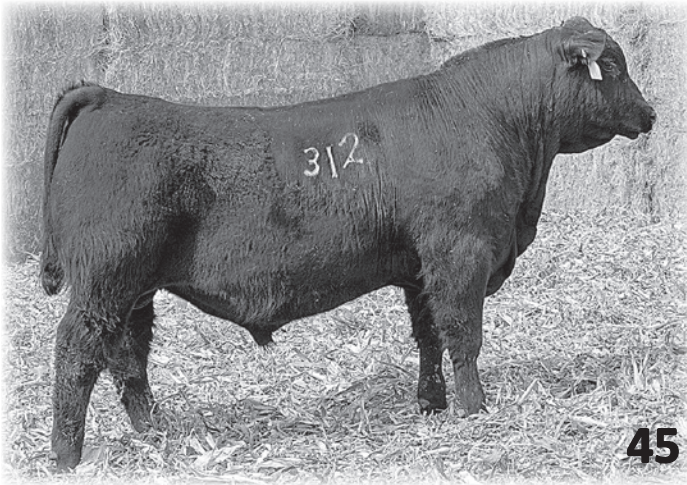
DIAMOND JUSTICE 901S
 DIAMOND BLACK LADY 7206
 KMK ALLIANCE 6595 I87
 CLARA 7365 BCBR

\$W
56
\$F
68
\$G
24
\$B
91
\$C
167

BW	205	Ratio	365	Ratio	SC EPD	HP	Dam's Ratio	
88	585	94	1055	96	.45	3.07	5/93	
CED	BW	WW	YW	MILK	CW	MARB	RE	FAT
-3	2.7	61	103	28	31	.17	.26	.008

ANGUSGS
Powered by Sanger Genetics





Lot 45 *Lees Coalition SHL 312*
 BD: 4/01/23 AAA #*20923488

HF SYNDICATE 213Z
U-2 COALITION 206C
 U2 ERELITE 109Z

CONNEALY CONSENSUS 7229
 HF MISS BLACKCAP 27R
 YOUNG DALE XCLUSIVE 25X
 U-2 ERELITE 1X

S A V BISMARCK 5682
TRAVETTE 503 SHL LAR
 TRAVETTE 811 LAR

G A R GRID MAKER
 S A V ABIGALE 0451
 CONNEALY LEAD ON
 TRAVETTE 524 SHL LAR

\$W
53
\$F
63
\$G
52
\$B
115
\$C
196

BW	205	Ratio	365	Ratio	SC EPD	HP	Dam's Ratio	
63	568	91	1091	99	.21	3.40	6/100	
CED	BW	WW	YW	MILK	CW	MARB	RE	FAT
15	-1.9	50	96	26	22	.67	.31	-.015



Lot 46 *Lees Stellar 3159*
 BD: 3/26/23 AAA #*20923508

MOHNEN SUBSTANTIAL 272
SITZ STELLAR 726D
 SITZ PRIDE 200B

BENFIELD SUBSTANCE 8506
 MOHNEN GLYN MAWR ELBA 1758
 CONNEALY FINAL PRODUCT
 SITZ PRIDE 308Y

KM BROKEN BOW 002
PAULA 187 6166 LAR
 PAULA 187 LAR

SUMMITCREST COMPLETE 1P55
 SUMMITCREST PRINCESS OP12
 KMK ALLIANCE 6595 187
 SODAK PAULA 6139-96

\$W
73
\$F
81
\$G
37
\$B
117
\$C
231

BW	205	Ratio	365	Ratio	SC EPD	HP	Dam's Ratio	
86	559	94	1037	94	.65	3.12	6/89	
CED	BW	WW	YW	MILK	CW	MARB	RE	FAT
8	-.3	70	117	24	43	.42	.47	.040



Lot 47 *Lees Resilient SJL 323*
 BD: 3/24/23 AAA #*20923492

SITZ STELLAR 726D
SITZ RESILIENT 10208
 SITZ MISS BURGESS 1856

MOHNEN SUBSTANTIAL 272
 SITZ PRIDE 200B
 SITZ TOP GAME 561X
 SITZ MISS BURGESS 4381

DIAMOND IN THE ROUGH
CLARA SIS 719 SJL LAR
 CLARA 367 SIS LAR

DIAMOND JUSTICE 901S
 DIAMOND BLACK LADY 720C
 M V C C PACKER 1500
 CLARA SIS 909 LAR

\$W
75
\$F
69
\$G
39
\$B
109
\$C
230

BW	205	Ratio	365	Ratio	SC EPD	HP	Dam's Ratio	
75	571	92	1050	95	.74	3.13	5/94	
CED	BW	WW	YW	MILK	CW	MARB	RE	FAT
9	.8	69	112	28	36	.41	.59	.019



Lot **48**

Lees Cowboy Up 3221

BD: 4/23/23

AAA #20923533

HA COWBOY UP 5405
LEES COWBOY UP 7136
PAULA I87 141 LAR

HA OUTSIDE 3008
HA BLACKCAP LADY 1602
CROOK MT REALLY WINDY 141
PAULA I87 LAR

APEX WINDY 078
SHOBANDA 4151 LAR
SHOBANDA 616 306 LAR

H A R B WINDY 702 JH
APEXETTE LUCY 6037
RITO 616 OF 4B20 6807
SHOBANDA RT 103 LAR

\$W	43
\$F	54
\$G	24
\$B	78
\$C	155

BW	205	Ratio	365	Ratio	SC EPD	HP	Dam's Ratio	
91	595	96	993	90	1.19	2.62	8/102	
CED	BW	WW	YW	MILK	CW	MARB	RE	FAT
-5	3.7	60	99	17	18	.08	.20	-.062

ANGUSGS
Powered by Regen Genetics



Lot **49**

Lees Cowboy Up 3200

BD: 4/12/23

AAA #*20923526

HA COWBOY UP 5405
LEES COWBOY UP 7136
PAULA I87 141 LAR

HA OUTSIDE 3008
HA BLACKCAP LADY 1602
CROOK MT REALLY WINDY 141
PAULA I87 LAR

BASIN EXCITEMENT
ALICIA 7182 LAR
ALICIA 801 LAR

BASIN EXPEDITION R156
BASIN LADY S532 AK
CROOK MT REALLY WINDY 141
ALICIA 41-93 603 LAR

\$W	55
\$F	31
\$G	30
\$B	61
\$C	148

BW	205	Ratio	365	Ratio	SC EPD	HP	Dam's Ratio	
85	600	97	992	90	.36	2.58	5/97	
CED	BW	WW	YW	MILK	CW	MARB	RE	FAT
4	.9	58	91	17	4	.38	-.12	-.007

ANGUSGS
Powered by Regen Genetics



Lot **51**

Lees Bomber SJL 328

BD: 4/17/23

AAA #*20923495

CASINO BOMBER N33
LEES BOMBER 0184
SHOBANDO 145 LAR

KM BROKEN BOW 002
CASINO ANNIE K48
R C BLACK CIGAR 0293
SHOBANDO 878 405 LAR

CASINO BOMBER N33
ALICIA IMAGE 015 SJL LAR
ALICIA IMAGE 015 LAR

KM BROKEN BOW 002
CASINO ANNIE K48
H A IMAGE MAKER 0415
ALICIA 6122 409 LAR

\$W	67
\$F	82
\$G	42
\$B	124
\$C	239

BW	205	Ratio	365	Ratio	SC EPD	HP	Dam's Ratio	
66	616	99	997	91	.91	2.50	2/101	
CED	BW	WW	YW	MILK	CW	MARB	RE	FAT
11	.2	68	105	18	45	.48	.47	.011

ANGUSGS
Powered by Regen Genetics





Lot 52 Lees Frontman 321 SJL LAR

BD: 4/03/23

AAA #*20930551

A A R FRONTMAN 3132
LEES FRONTMAN 1141
PAULA 362 LAR

APEX FRONTMAN 081
A A R BLACKBIRD 9044
APEX WINDY 078
PAULA LEAD 917 LAR

\$W
75
\$F
80
\$G
44
\$B
124
\$C
253

A A R FRONTMAN 3132
ALICIA SIS 117 SJL LAR
ALICIA SIS 921 LAR

APEX FRONTMAN 081
A A R BLACKBIRD 9044
A A R CREED 5802
ALICIA SIS 617 LAR

BW	205	Ratio	365	Ratio	SC EPD	HP	Dam's Ratio	
75	587	96	1099	102	1.22	3.32	1/96	
CEP	BW	WW	YW	MILK	CW	MARB	RE	FAT
9	-1	65	112	33	44	.49	.52	-.002

ANGUSGS
Powered by Regen Genetics

Lot 53 Lees Frontman 302 SHL LAR

BD: 3/25/23

AAA #*20930550

A A R FRONTMAN 3132
LEES FRONTMAN 1141
PAULA 362 LAR

APEX FRONTMAN 081
A A R BLACKBIRD 9044
APEX WINDY 078
PAULA LEAD 917 LAR

\$W
74
\$F
96
\$G
44
\$B
140
\$C
253

HA PRIME CUT 4493
TRAVETTE 109 SHL LAR
TRAVETTE 707 SHL LAR

VERMILION SIRLOIN
HA MISS BLACKCAP 9127
HA COWBOY UP 5405
TRAVETTE 021 SHL LAR

BW	205	Ratio	365	Ratio	SC EPD	HP	Dam's Ratio	
75	651	106	1115	103	1.03	3.05	1/106	
CEP	BW	WW	YW	MILK	CW	MARB	RE	FAT
6	1.1	72	126	32	53	.51	.42	-.003

ANGUSGS
Powered by Regen Genetics



Lot 54 Lees Frontman 3118 LAR

BD: 3/25/23

AAA #*20930552

A A R FRONTMAN 3132
LEES FRONTMAN 1141
PAULA 362 LAR

APEX FRONTMAN 081
A A R BLACKBIRD 9044
APEX WINDY 078
PAULA LEAD 917 LAR

\$W
72
\$F
84
\$G
39
\$B
122
\$C
235

HA PRIME CUT 4493
ALICIA 1173 LAR
ALICIAS 5195 LAR

VERMILION SIRLOIN
HA MISS BLACKCAP 9127
M V C C PACKER 1500
ALICIAS 019 LAR

BW	205	Ratio	365	Ratio	SC EPD	HP	Dam's Ratio	
66	658	108	1077	100	1.29	2.76	1/108	
CEP	BW	WW	YW	MILK	CW	MARB	RE	FAT
14	-1.2	71	111	24	45	.47	.44	.041

ANGUSGS
Powered by Regen Genetics

Lot 55 Lees Frontman 3122 LAR

BD: 3/27/23

AAA #*20930554

A A R FRONTMAN 3132
LEES FRONTMAN 1141
 PAULA 362 LAR

APEX FRONTMAN 081
 A A R BLACKBIRD 9044
 APEX WINDY 078
 PAULA LEAD 917 LAR

LEES JUSTIFIED 9116
ERICA 1178 LAR
 ERICA 8182 LAR

KG JUSTIFIED 3023
 PAULA 7204 LAR
 A A R COUNSELOR 5546
 ERICA 4196 LAR

\$W
66
\$F
79
\$G
30
\$B
109
\$C
209



BW	205	Ratio	365	Ratio	SC EPD	HP	Dam's Ratio	
79	645	105	1123	104	+1.98	3.13	1/105	
CED	BW	WW	YW	MILK	CW	MARB	RE	FAT
+6	+1.5	+68	+112	+27	+37	+1.26	+1.30	-0.14

ANGUSGS
Powered by Regen Genetics

Lot 56 Lees Frontman 3126 LAR

BD: 3/31/23

AAA #*20930553

A A R FRONTMAN 3132
LEES FRONTMAN 1141
 PAULA 362 LAR

APEX FRONTMAN 081
 A A R BLACKBIRD 9044
 APEX WINDY 078
 PAULA LEAD 917 LAR

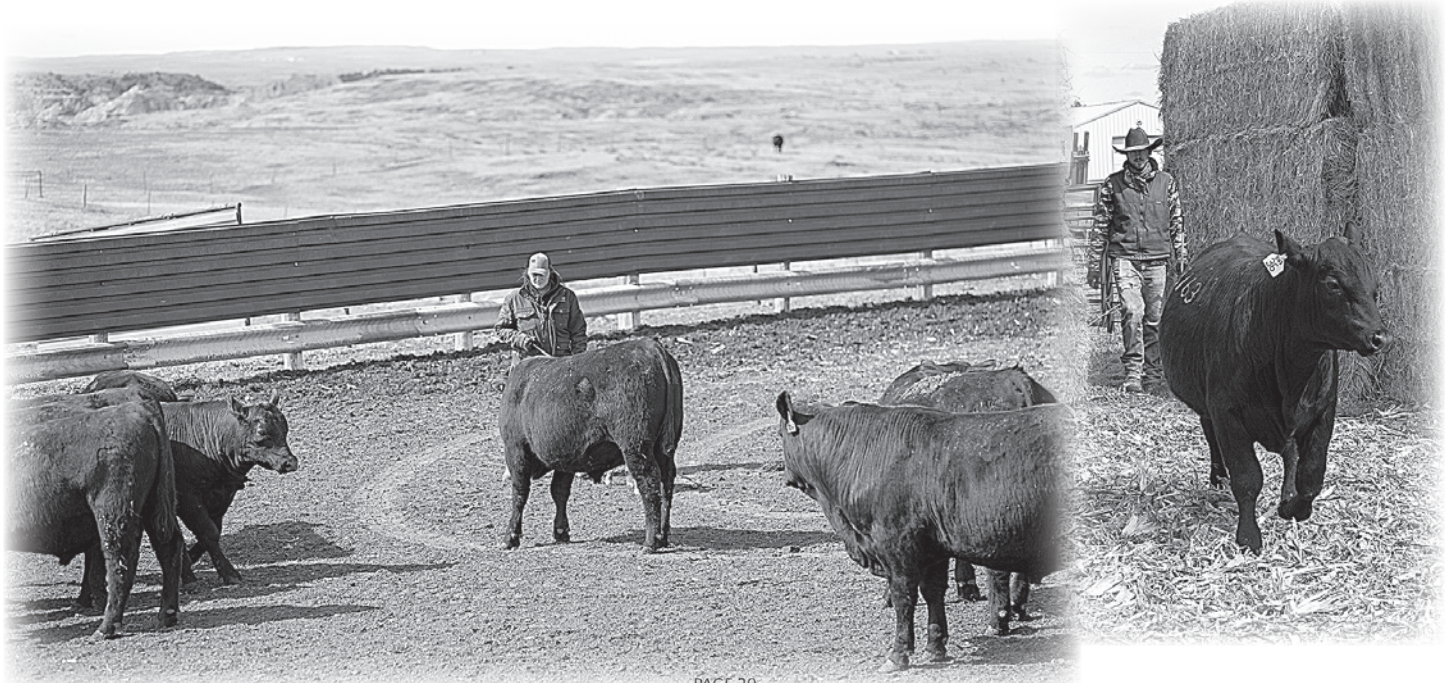
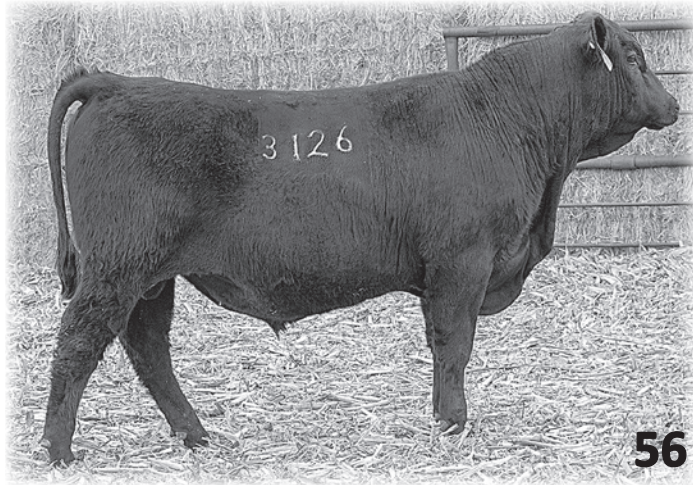
SITZ STELLAR 726D
SIERRA 1136 LAR
 SIERRA 307 LAR

MOHNEN SUBSTANTIAL 272
 SITZ PRIDE 200B
 S A V BISMARCK 5682
 SIERRA 168 LAR

\$W
71
\$F
76
\$G
14
\$B
90
\$C
183

BW	205	Ratio	365	Ratio	SC EPD	HP	Dam's Ratio	
55	627	102	1072	99	.94	2.91	1/102	
CED	BW	WW	YW	MILK	CW	MARB	RE	FAT
12	-.9	67	115	35	42	.02	.18	.017

ANGUSGS
Powered by Regen Genetics





Driving the science of better breeding

There's little room for error in the cattle business. Producers need the most advanced information to make smart selection decisions, and Angus Genetics Inc. (AGI) provides it through genomic-enhanced expected progeny differences (GE-EPDs).

GE-EPDs have become the industry standard for herd improvement, building on decades of science-backed genetic evaluation tools originated and maintained through the American Angus Association, home to the largest and ever-growing single-breed beef cattle database.

EPDs that traditionally contained all pedigree, performance and progeny information now also include results from available genomic, or DNA, tests. Breeders who use genomic technology give buyers access to AGI-generated GE-EPDs that provide:

Increased predictability and decreased risk for young and unproven animals due to enhanced accuracy of EPDs

Better characterization of genetics for difficult-to-measure performance traits (such as carcass traits, maternal traits and feed efficiency)

The ability to make more rapid progress for traits that are important to you, due to:

- more accurate selection
- easier identification of genetic outliers
- the ability to propagate young animals with confidence earlier in their lives

In fact, GE-EPDs on unproven animals have the same amount of accuracy as if they have recorded an average of 15 progeny, depending on the trait. That's valuable insight, offered regularly through the breed's weekly national cattle evaluation.

TRAIT	PROGENY EQUIVALENT	TRAIT	PROGENY EQUIVALENT
Calving Ease Direct	25	Pulmonary Arterial Pressure	17
Calving Ease Maternal	19	Hair Shed Score	8
Birth Weight	23	Heifer Pregnancy	17
Weaning Weight	27	Maternal Milk	35
Yearling Weight	22	Mature Weight	14
Yearling Height	15	Mature Height	9
Dry Matter Intake	11	Carcass Weight	14
Scrotal Circumference	13	Marbling Score	10
Docility	11	Ribeye Area	16
Foot Claw Set	13	Backfat Thickness	13
Foot Angle	13		

How do you know if EPDs are genomic-enhanced?

Ask your breeder, refer to the registration paper, or look for the AGI GE-EPD logo, Angus GS™ powered by partner Neogen or the HD50k by partner Zoetis. These images indicate animals for which genomic testing has been conducted and incorporated by AGI into GE-EPDs



www.angus.org

Lee Angus Ranch
16503 81st St SW
Rhame ND 58651

FIRST CLASS MAIL
U.S. POSTAGE
PAID
Permit No. 222
BISMARCK, ND
58501



A2Z PRINTING - BOWMAN ND - 701-523-4656 • 888-768-4656