

Lee Angus BULL SALE

Sitz Stellar 726D



AAA +18397542 BD: 1/23/2016

Sitz Resilient 10208



AAA 19057457 BD: 2/15/2018

U-2 Coalition 206C



AAA 18626847 BD: 1/23/2015

**TUESDAY,
MAY 9,
2023**

1:00 PM MDST

**Bowman Auction Market
Bowman, North Dakota**

- Selling -

50 Performance Tested Registered Yearling
ANGUS BULLS

www.leeangusranch.com

Lee Angus Ranch

Raymond, Chris, Sterling & Sierra Lee

16503 81st St SW

Rhame ND 58651

www.leeangusranch.com

701-279-5717

Raymond 701-440-0669

Sterling 701-440-8095

Lee Angus BULL SALE

Welcome Cattlemen...

To our Annual Production Sale, Tuesday, May 9, 2023 at 1:00 p.m. (MDST) at Bowman Auction Market, Bowman, ND.

The bulls are guaranteed to be breeders. To help each bull reach his full genetic potential, they were fed a high roughage ration. At birth the bulls were vaccinated with Alpha 7 C&D and at branding were vaccinated with Vista Once. They were preconditioned with Vision 7 with Somnus and Vista Once. At weaning they received Vista 5 plus Vista 7 with Somnus and were poured with Symentec and Cleanup II. The bulls will be semen tested before sale day and scrotal measurements will be available sale day.

There will be bulls with added growth, calving ease and extra length, abundant amount of depth of body and spring of rib. We are featuring sons of many of the top bulls in the Angus breed.

As in the past, if you haul your bulls sale day we will deduct \$50.00 per bull. If we can be of any assistance with your bull selection, please feel free to call Raymond at 701-279-5717. Come join us for a free noon meal and look over this year's offering. Hope to see you May 9th!

TUESDAY, MAY 9, 2023
1:00 PM MDST
Bowman Auction Market
Bowman, ND

- Selling -

Performance Tested Registered Yearling
50 ANGUS BULLS

General Information

ACCOMMODATIONS: Bowman has several nice motels. Call us, and we will reserve a room for you.

TRUCKING: Free delivery up to 300 miles.

\$50 DISCOUNT per bull if you haul them home sale day.

HEALTH: All have had Alpha 7 C&D, Vista Once, Vision 7 with Somnus and Vista 5 vaccinations and poured with Symentec and Cleanup II.

TERMS: Cash

GUARANTEE: All animals selling under the rules and regulations adopted by the American Angus Association, and bulls will have passed a semen evaluation test.

VIDEOS & PHOTOS: By Annette Steffan

Sale Day Toll Free
877-211-0600

Auctioneer
Seth Weishaar

Videos can be viewed at
dvauction.com or www.leeangusranch.com

For more information contact

Lee Angus Ranch
Raymond, Chris, Sterling & Sierra Lee

16503 81st St SW
Rhame ND 58651
www.leeangusranch.com

701-279-5717
Raymond - 701-440-0669
Sterling - 701-440-8095

REFERENCE SIRE



Sire **A**

Sitz Stellar 726D

BD: 1/23/2016 AAA #18397542
AMF-CAF-D2F-DDF-M1F-NHF-OSF GEN: i50K

BENFIELD SUBSTANCE 8506
MOHNEN SUBSTANTIAL 272
MOHNEN GLYN MAWR ELBA 1758

H A IMAGE MAKER 0415
BENFIELD ELBA 1105
LT TERRITORY 5824 OF EA
MOHNEN GLYN MAWR ELBA 1345

CONNEALY FINAL PRODUCT
SITZ PRIDE 200B
SITZ PRIDE 308Y

CONNEALY PRODUCT 568
EBONISTA OF CONANGA 471
SITZ UPWARD 307R
SITZ PRIDE 44P

\$W	61
\$F	91
\$G	42
\$B	133
C	236

CED	BW	WW	YW	MILK	CW	MARB	RE	FAT
3	-0.2	70	127	19	50	.56	.50	.069



Sire **B**

Sitz Resilient 10208

BD: 2/15/2018 AAA #19057457
AMF-CAF-D2F-DDF-M1F-NHF-OSF-RDF GEN: Angus GS

MOHNEN SUBSTANTIAL 272
SITZ STELLAR 726D
SITZ PRIDE 200B

BENFIELD SUBSTANCE 8506
MOHNEN GLYN MAWR ELBA 1758
CONNEALY FINAL PRODUCT
SITZ PRIDE 308Y

SITZ TOP GAME 561X
SITZ MISS BURGESS 1856
SITZ MISS BURGESS 4381

GDAR GAME DAY 449
SITZ PRIDE 88T
SITZ RAINMAKER 10899
SITZ MISS BURGESS 1609

\$W	67
\$F	77
\$G	66
\$B	143
C	274

CED	BW	WW	YW	MILK	CW	MARB	RE	FAT
8	0.2	75	134	21	44	.88	.72	0

ANGUS GS
Owned by Megan Gardner



Sire **C**

KG Justified 3023

BD: 1/21/2013 AAA #17707279
AMF-CAF-D2F-DDF-M1F-NHF-OHF-OSF GEN: HD50K

CONNEALY CONSENSUS 7229
CONNEALY JUDGMENT
ENTRINE OF CONANGA 9876

CONNEALY CONSENSUS
BLUE LILLY OF CONANGA 16
RITO 6EMA OF 4L3 EMBLAZON
ENTRANCE OF CONANGA 206

SITZ WISDOM 481T
KG MISS MAGIC 1443
KG MISS MAGIC 3528

CONNEALY ONWARD
SITZ ELLUNA ELITE 94P
KG TRAVELER 8180 8171
KG MISS MAGIC 6560

\$W	80
\$F	75
\$G	70
\$B	145
C	282

CED	BW	WW	YW	MILK	CW	MARB	RE	FAT
12	-2.0	61	108	30	34	1.17	.32	.052

Justified is a sire of phenotypic power with foot and udder quality and body mass and muscle. His sons are impressive and his daughters are highly productive, easy-keeping and broody with picture perfect udders.



D

Sire
D

U-2 Coalition 206C

BD: 1/23/2015

AAA #18626847

AMF-CAF-D2F-DDF-M1F-NHF-OSF-RDF

GEN: GGPLD

CONNEALY CONSENSUS 7229
HF SYNDICATE 213Z
HF MISS BLACKCAP 27R

CONNEALY CONSENSUS
BLUE LILLY OF CONANGA 16
TC FREEDOM 104
HF MISS BLACKCAP 50N

\$W	54
\$F	94
\$G	43
\$B	137
c	254

YOUNG DALE XCLUSIVE 25X
U2 ERELITE 109Z
U-2 ERELITE 1X

YOUNG DALE KNOCK OUT 134U
YOUNG DALE POLLYANNA 60T
S A V FINAL ANSWER 0035
U-2 ERELITE 8109U

CE	BW	WW	YW	MILK	CW	MARB	RE	FAT
10	0.9	56	110	28	41	.41	.53	-.018



E

Sire
E

A A R Frontman 3132

BD: 2/21/2013

AAA #17614182

AMF-CAF-D2F-DDF-M1F-NHF-OHF-OSF-RDF

GEN: HD50K

KESSLERS FRONTMAN R001
APEX FRONTMAN 081
APEXETTE PRIDE 9067

CONNEALY FRONT PAGE 0228
KESSLERS BELL 0024
CONNEALY THUNDER
APEXETTE 053 PRIDE 5046

\$W	82
\$F	104
\$G	35
\$B	138
c	259

B C MATRIX 4132
A A R BLACKBIRD 9044
A A R BLACKBIRD 7026

O C C EMBLAZON 854E
CAF PURE PRIDE EXT 99
MYTTY IN FOCUS
A A R BLACKBIRD 5006

CE	BW	WW	YW	MILK	CW	MARB	RE	FAT
12	-2.0	62	117	34	54	.35	.38	.025

A A R Frontman 3132 comes from a powerful dam. His females make excellent cows - great uddered, wedge shaped and deep bodied. This sire is impressive - great feet, super disposition, long and thick. His calves are easy to handle and are quiet.

Sire
F

Lees Creed 9109

BD: 3/01/2019

AAA #19594000

CONNEALY THUNDER
A A R CREED 5802
A A R LADY GRACE 3844

BALDRIDGE KABOOM K243 KCF
PARKA OF CONANGA 241
CONNEALY CONSENSUS 9705
A A R LADY GRACE 0805

\$W	64
\$F	104
\$G	30
\$B	134
c	250

HA COWBOY UP 5405
PAULA LEAD 7161 LAR
PAULAS LEAD 163 LAR

HA OUTSIDE 3008
HA BLACKCAP LADY 1602
RR CIGAR 7151
PAULA LEAD 917 LAR

CE	BW	WW	YW	MILK	CW	MARB	RE	FAT
10	0.6	68	129	27	54	.18	.48	-.003

Sire
G

Lees Bomber 0184

BD: 3/26/2020

AAA #19945408

GEN: Angus GS

KM BROKEN BOW 002
CASINO BOMBER N33
CASINO ANNIE K48

SUMMITCREST COMPLETE 1P55
SUMMITCREST PRINCESS OP12
DPL UPWARD L70
CASINO ANNIE G64

\$W	59
\$F	83
\$G	45
\$B	128
c	238

R C BLACK CIGAR 0293
SHOBANDO 145 LAR
SHOBANDO 878 405 LAR

CONNEALY FRONTLINE
REV ROSE OF C H 8091
BON VIEW NEW DESIGN 878
SODAK SHOBANDA 6029-96

CE	BW	WW	YW	MILK	CW	MARB	RE	FAT
9	1.9	67	116	21	46	.64	.27	.042

ANGUS GS
Powered by Regen Genetics

SALE BULLS

Lot **1**

Lees Creed 2209

BD: 4/10/22

AAA #20620568

A A R CREED 5802
LEES CREED 9109
PAULA LEED 7161 LAR

CONNELY THUNDER
A A R LADY GRACE 3844
HA COWBOY UP 5405
PAULAS LEAD 163 LAR

HA COWBOY UP 5405
PAULA 7213 LAR
PAULA 284 LAR

HA OUTSIDE 3008
HA BLACKCAP LADY 1602
RR CIGAR 7151
PAULA 187 LAR

\$W	61
\$F	81
\$G	38
\$B	120
\$C	237

BW	205	Ratio	365	Ratio	SC	HP	Dam's Ratio	
91	729	113	1406	116	35.5	15.6	4/103	
CED	BW	WW	YW	MILK	CW	MARB	RE	FAT
9	2.5	72	128	23	40	.33	.51	-.013

ANGUSGS
Powered by Regen Genetics



Lot **2**

Lees Stellar 204 SHL

BD: 3/08/22

AAA #20623099

MOHNEN SUBSTANTIAL 272
SITZ STELLAR 726D
SITZ PRIDE 200B

BENFIELD SUBSTANCE 8506
MOHNEN GLYN MAWR ELBA 1758
CONNELY FINAL PRODUCT
SITZ PRIDE 308Y

A A R FRONTMAN 3132
PAULA 0189 LAR
PAULA 4159 LAR

APEX FRONTMAN 081
A A R BLACKBIRD 9044
A A R TEN X 7008 S A
PAULA 934 LAR

\$W	84
\$F	71
\$G	46
\$B	117
\$C	244

BW	205	Ratio	365	Ratio	SC	HP	Dam's Ratio	
79	690	109	1280	108	37.0	12.2	1/109	
CED	BW	WW	YW	MILK	CW	MARB	RE	FAT
9	-1.1	76	133	31	45	.62	.43	+0.052

ANGUSGS
Powered by Regen Genetics



Lot **3**

Lees Stellar 207 SHL

BD: 3/24/22

AAA #20623231

SITZ STELLAR 726 726D
SITZ RESILIENT 10208
SITZ MISS BURGESS 1856

MOHNEN SUBSTANTIAL 272
SITZ PRIDE 200B
SITZ TOP GAME 561X
SITZ MISS BURGESS 4381

RR CIGAR 7151
TRAVETTE 073 SHL LAR
TRAVETTE 811 LAR

R C BLACK CIGAR 0293
RR BLACKCAP 4752
CONNELY LEAD ON
TRAVETTE 524 SHL LAR

\$W	67
\$F	101
\$G	41
\$B	142
\$C	253

BW	205	Ratio	365	Ratio	SC	HP	Dam's Ratio	
82	674	105	1354	112	36.0	15.1	11/106	
CED	BW	WW	YW	MILK	CW	MARB	RE	FAT
2	1.9	77	138	25	62	.25	.91	-.023

ANGUSGS
Powered by Regen Genetics

Lot **4**

Lees Creed 2227

BD: 4/20/22

AAA #20620570

A A R CREED 5802
LEES CREED 9109
PAULA LEAD 7161 LAR

CONNEALY THUNDER
A A R LADY GRACE 3844
HA COWBOY UP 5405
PAULAS LEAD 163 LAR

HA SAND STORM 3403
SHOBANDA 6225 LAR
SHOBANDA 038 LAR

SITZ UPWARD 307R
HA LASS 4206
H A IMAGE MAKER 0415
SHOBANDA 732 LAR

\$W	72
\$F	89
\$G	35
\$B	124
\$C	227

BW	205	Ratio	365	Ratio	SC	HP	Dam's Ratio	
92	680	106	1306	108	31.0	11.9	5/102	
CED	BW	WW	YW	MILK	CW	MARB	RE	FAT
5	2.3	81	147	26	57	.40	.22	+0.18

ANGUSGS
Powered by Regen Genetics



Lot **5**

Lees Frontman 2177

BD: 3/27/22

AAA #20623111

APEX FRONTMAN 081
A A R FRONTMAN 3132
A A R BLACKBIRD 9044

KESSLERS FRONTMAN R001
APEXETTE PRIDE 9067
B C MATRIX 4132
A A R BLACKBIRD 7026

EXAR UPSHOT 0562B
ALICIA 6197 LAR
ALICIA 801 LAR

SITZ UPWARD 307R
EXAR BARBARA T020
CROOK MT REALLY WINDY 141
ALICIA 41-93 603 LAR

\$W	84
\$F	90
\$G	28
\$B	118
\$C	241

BW	205	Ratio	365	Ratio	SC	HP	Dam's Ratio	
76	726	113	1340	111	36.0	14.7	5/98	
CED	BW	WW	YW	MILK	CW	MARB	RE	FAT
8	0.4	78	138	32	55	.23	.27	+0.21

ANGUSGS
Powered by Regen Genetics



SALE REPRESENTATIVES

Scott Dirk

Tri-State Livestock News
605-380-6024

Kirby Goettsch

Farm & Ranch Guide
605-226-8925 or 380-3939 (cell phone)

Vern Frey

Frey Livestock Sales & Service
701-721-0344

Lot **6**

Lees Creed 2229

BD: 4/26/22

AAA #20620571

A A R CREED 5802
LEES CREED 9109
PAULA LEAD 7161 LAR

CONNEALY THUNDER
A A R LADY GRACE 3844
HA COWBOY UP 5405
PAULAS LEAD 163 LAR

A A R COUNSELOR 5546
PAULA 7199 LAR
PAULA 4158 LAR

CONNEALY COUNSELOR
A A R AIRY PRIMROSE 9595
N BAR EMULATION EXT
PAULA 707 LAR

\$W	61
\$F	93
\$G	48
\$B	142
\$C	247

BW	205	Ratio	365	Ratio	SC	HP	Dam's Ratio	
100	707	110	1320	109	39.0	12.3	4/104	
CED	BW	WW	YW	MILK	CW	MARB	RE	FAT
-1	4.9	71	122	27	54	.51	.62	-0.11

ANGUSGS
Powered by Regen Genetics



Lot **7**

Lees Bomber 2181

BD: 3/27/22

AAA #20620563

CASINO BOMBER N33
LEES BOMBER 0184
SHOBANDO 145 LAR

KM BROKEN BOW 002
CASINO ANNIE K48
R C BLACK CIGAR 0293
SHOBANDO 878 405 LAR

HA COMMANDER 4743
ALICIA 9160 LAR
ALICIA 6112 LAR

HA COMMANDER 2544
HA BLACKCAP LADY 1545
R/M TURNING POINT 1C94
ALICIA 4176 LAR

\$W
70
\$F
94
\$G
54
\$B
147
\$C
268

BW	205	Ratio	365	Ratio	SC	HP	Dam's Ratio	
84	698	109	1277	106	38.0	13.5	2/108	
CED	BW	WW	YW	MILK	CW	MARB	RE	FAT
7	2.1	72	127	28	55	.82	.22	+0.036

ANGUSGS
Powered by Regen Genetics



Lot **8**

Lees Bomber 2136

BD: 3/15/22

AAA #20620562

CASINO BOMBER N33
LEES BOMBER 0184
SHOBANDO 145 LAR

KM BROKEN BOW 002
CASINO ANNIE K48
R C BLACK CIGAR 0293
SHOBANDO 878 405 LAR

A A R FRONTMAN 3132
ALICIA 9170 LAR
ALICIA 4179 LAR

APEX FRONTMAN 081
A A R BLACKBIRD 9044
EXAR UPSHOT 0562B
ALICIA 801 LAR

\$W
70
\$F
74
\$G
39
\$B
113
\$C
211

BW	205	Ratio	365	Ratio	SC	HP	Dam's Ratio	
73	692	108	1276	106	35.0	11.3	2/103	
CED	BW	WW	YW	MILK	CW	MARB	RE	FAT
11	-1.7	60	107	34	45	.39	.47	+0.004

ANGUSGS
Powered by Regen Genetics

Lot **9**

Lees Coalition 2199

BD: 4/01/22

AAA #20623209

HF SYNDICATE 213Z
U-2 COALITION 206C
U2 ERELITE 109Z

CONNEALY CONSENSUS 7229
HF MISS BLACKCAP 27R
YOUNG DALE XCLUSIVE 25X
U-2 ERELITE 1X

M V C C PACKER 1500
SIERRA 259 LAR
SIERRA 503 LAR

CONNEALY PACKER 547
MVCC MISSY 222-1194
SITZ ALLIANCE 6595
ALICIA 9440 LAR 904

\$W
59
\$F
83
\$G
31
\$B
114
\$C
212

BW	205	Ratio	365	Ratio	SC	HP	Dam's Ratio	
73	713	111	1262	104	37.5	9.2	8/109	
CED	BW	WW	YW	MILK	CW	MARB	RE	FAT
14	-1.8	55	103	31	42	.29	.19	+0.003

ANGUSGS
Powered by Regen Genetics



Lot **10**

Lees Resilient 2183

BD: 3/27/22

AAA #20623225

SITZ STELLAR 726D
SITZ RESILIENT 10208
 SITZ MISS BURGESS 1856

MOHNEN SUBSTANTIAL 272
 SITZ PRIDE 200B
 SITZ TOP GAME 561X
 SITZ MISS BURGESS 4381

S A V BISMARCK 5682
ALICIAS FORESIGHT 333 LAR
 ALICIAS FORESIGHT 714 LAR

G A R GRID MAKER
 S A V ABIGALE 0451
 WOODHILL FORESIGHT
 LEES ALICIA 837

\$W
61
\$F
89
\$G
49
\$B
137
\$C
270

BW	205	Ratio	365	Ratio	SC	HP	Dam's Ratio	
82	693	108	1261	104	35.0	21.6	7/106	
CEB	BW	WW	YW	MILK	CW	MARB	RE	FAT
2	2.2	75	121	14	48	.47	.84	-.004

ANGUSGS
Powered by Regen Genetics



Lot **11**

Lees Creed 2208

BD: 4/09/22

AAA #20620567

A A R CREED 5802
LEES CREED 9109
 PAULA LEED 7161 LAR

CONNELLY THUNDER
 A A R LADY GRACE 3844
 HA COWBOY UP 5405
 PAULAS LEAD 163 LAR

S A V BISMARCK 5682
PAULAS DESIGN 347 LAR
 PAULAS DESIGN 878 742 LAR

G A R GRID MAKER
 S A V ABIGALE 0451
 BON VIEW NEW DESIGN 878
 SODAK PAULA 6139-96

\$W
67
\$F
86
\$G
15
\$B
101
\$C
205

BW	205	Ratio	365	Ratio	SC	HP	Dam's Ratio	
80	681	106	1247	103	36.5	17.0	8/100	
CEB	BW	WW	YW	MILK	CW	MARB	RE	FAT
13	-1.6	58	99	32	45	-.05	.42	.039

ANGUSGS
Powered by Regen Genetics

VITAFERM®

WITH THE AMAFERM® ADVANTAGE

“Feeding VitaFerm has helped our conception rates and the fertility of our bulls.”

— Bob White

For more information visit
www.vitaferm.com



Lot **12**

Lees Bomber 2202

BD: 4/03/22

AAA #20620566

CASINO BOMBER N33
LEES BOMBER 0184
 SHOABANDO 145 LAR

KM BROKEN BOW 002
 CASINO ANNIE K48
 R C BLACK CIGAR 0293
 SHOABANDO 878 405 LAR

HA PRIME CUT 4493
ROSE 9139 LAR
 PAULA 024 LAR

VERMILION SIRLOIN
 HA MISS BLACKCAP 9127
 R C BLACK CIGAR 0293
 PAULAS DESIGN 878 742 LAR

\$W
65
\$F
69
\$G
38
\$B
107
\$C
217

BW	205	Ratio	365	Ratio	SC	HP	Dam's Ratio	
79	705	110	1206	100	33.0	13.7	2/107	
CEB	BW	WW	YW	MILK	CW	MARB	RE	FAT
14	-0.2	62	105	26	38	.51	.26	.052

ANGUSGS
Powered by Regen Genetics



Lot **13**

Lees Coalition 2144

BD: 3/20/22

AAA #20623207

HF SYNDICATE 213Z
U-2 COALITION 206C
U2 ERELITE 109Z

CONNEALY CONSENSUS 7229
HF MISS BLACKCAP 27R
YOUNG DALE XCLUSIVE 25X
U-2 ERELITE 1X

M V C C PACKER 1500
ERICA 262 LAR
ERICA 141 705 LAR

CONNEALY PACKER 547
MVCC MISSY 222-1194
CROOK MT REALLY WINDY 141
ERICA 6595 509 LAR

\$W
71
\$F
61
\$G
29
\$B
90
\$C
193

BW	205	Ratio	365	Ratio	SC	HP	Dam's Ratio	
90	713	111	1212	100	34.5	7.7	9/106	
CED	BW	WW	YW	MILK	CW	MARB	RE	FAT
10	0.7	61	97	34	36	.20	.39	.007

ANGUSGS
Powered by Regen Genetics

Lot **14**

Lees Resilient 2175

BD: 3/27/22

AAA #20623197



SITZ STELLAR 726D
SITZ RESILIENT 10208
SITZ MISS BURGESS 1856

MOHNEN SUBSTANTIAL 272
SITZ PRIDE 200B
SITZ TOP GAME 561X
SITZ MISS BURGESS 4381

CONNEALY CONSENSUS 7229
ALICIA 5189 LAR
ALICIA 801 LAR

CONNEALY CONSENSUS
BLUE LILLY OF CONANGA 16
CROOK MT REALLY WINDY 141
ALICIA 41-93 603 LAR

\$W
73
\$F
76
\$G
61
\$B
137
\$C
256

BW	205	Ratio	365	Ratio	SC	HP	Dam's Ratio	
82	705	110	1217	101	37.0	13.0	6/104	
CED	BW	WW	YW	MILK	CW	MARB	RE	FAT
8	0.3	72	117	23	41	.79	.54	-.018

ANGUSGS
Powered by Regen Genetics



Lot **15**

Lees Resilient 2142

BD: 3/19/22

AAA #20623227

SITZ STELLAR 726D
SITZ RESILIENT 10208
SITZ MISS BURGESS 1856

MOHNEN SUBSTANTIAL 272
SITZ PRIDE 200B
SITZ TOP GAME 561X
SITZ MISS BURGESS 4381

R C BLACK CIGAR 0293
SHOBANDO 145 LAR
SHOBANDO 878 405 LAR

CONNEALY FRONTLINE
REV ROSE OF C H 8091
BON VIEW NEW DESIGN 878
SODAK SHOBANDA 6029-96

\$W
76
\$F
81
\$G
28
\$B
109
\$C
221

BW	205	Ratio	365	Ratio	SC	HP	Dam's Ratio	
86	705	110	1220	101	37.0	12.1	10/105	
CED	BW	WW	YW	MILK	CW	MARB	RE	FAT
6	0.9	69	117	33	51	.18	.42	.009

ANGUSGS
Powered by Regen Genetics



Lot 16 Lees Justified 2106 LAR

BD: 3/05/22

AAA #20621909



CONNEALY JUDGMENT
KG JUSTIFIED 3023
KG MISS MAGIC 1443

CONNEALY CONSENSUS 7229
ENTRINE OF CONANGA 9876
SITZ WISDOM 481T
KG MISS MAGIC 3528

HA PRIME CUT 4493
PAULA TIME 0143 LAR
PAULAS RIGHT TIME 6187 LAR

VERMILION SIRLOIN
HA MISS BLACKCAP 9127
CONNEALY CONSENSUS 7229
PAULAS RIGHT TIME 741 LAR

\$W	64
\$F	86
\$G	56
\$B	143
\$C	245

BW	205	Ratio	365	Ratio	SC	HP	Dam's Ratio	
90	688	109	1197	101	33.0	13.3	1/109	
CED	BW	WW	YW	MILK	CW	MARB	RE	FAT
2	1.2	72	120	20	45	.82	.49	.045



16

Lot 17 Lees Traveler 9161 2105 LAR

BD: 3/04/22

AAA #20623078

D H D TRAVELER 6807
G D A R TRAVELER 9161
G D A R SAPPHIRE 728

Q A S TRAVELER 23-4
BEMINDFUL MAID D H D 0807
TRAVELER 1148 G D A R
G D A R SAPPHIRE 5161 L T

A A R COUNSELOR 5546
ALICIA 0194 LAR
ALICIA 239 LAR

CONNEALY COUNSELOR
A A R AIRY PRIMROSE 9595
RR CIGAR 7151
ALICIA 821 LAR

\$W	63
\$F	86
\$G	27
\$B	112
\$C	193

BW	205	Ratio	365	Ratio	SC	HP	Dam's Ratio	
86	686	108	1190	100	38.0	10.5	1/108	
CED	BW	WW	YW	MILK	CW	MARB	RE	FAT
4	2.0	57	100	35	49	.05	.71	.004



17

Lot 18 Lees Jusitifed 2152

BD: 3/23/22

AAA #20621955

CONNEALY JUDGMENT
KG JUSTIFIED 3023
KG MISS MAGIC 1443

CONNEALY CONSENSUS 7229
ENTRINE OF CONANGA 9876
SITZ WISDOM 481T
KG MISS MAGIC 3528

S A V BISMARCK 5682
ALICIA 6104 LAR
ALICIA 4181 LAR

G A R GRID MAKER
S A V ABIGALE 0451
EXAR UPSHOT 0562B
ALICIA 801 LAR

\$W	71
\$F	92
\$G	54
\$B	145
\$C	262

BW	205	Ratio	365	Ratio	SC	HP	Dam's Ratio	
81	677	105	1315	109	37.0	16.0	2/109	
CED	BW	WW	YW	MILK	CW	MARB	RE	FAT
2	1.9	72	132	29	50	.71	.41	0



18

Lot **19**

Lees Frontman 2104 LAR

BD: 3/04/22

AAA #20623075

APEX FRONTMAN 081
A A R FRONTMAN 3132
 A A R BLACKBIRD 9044

KESSLERS FRONTMAN R001
 APEXETTE PRIDE 9067
 B C MATRIX 4132
 A A R BLACKBIRD 7026

A A R COUNSELOR 5546
PAULA TIME 0192 LAR
 PAULAS RIGHT TIME 6171 LAR

CONNEALY COUNSELOR
 A A R AIRY PRIMROSE 9595
 APEX WINDY 078
 PAULAS RIGHT TIME 741 LAR

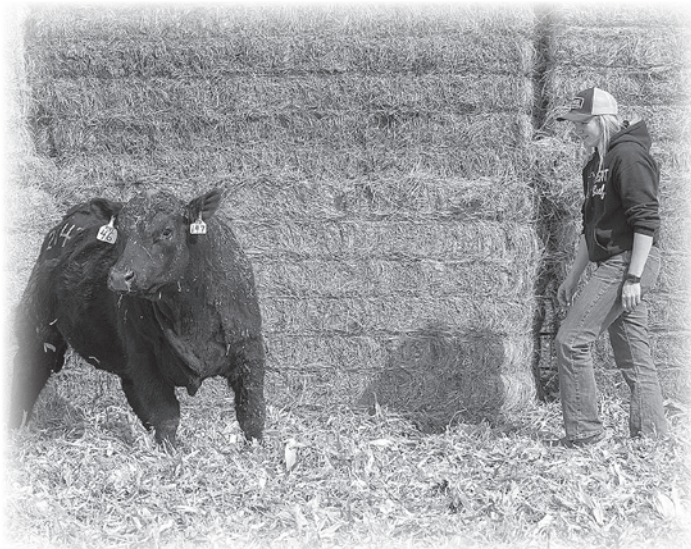
\$W
77
\$F
95
\$G
45
\$B
140
\$C
265

BW	205	Ratio	365	Ratio	SC	HP	Dam's Ratio	
75	652	103	1250	105	36.0	16.9	1/103	
CED	BW	WW	YW	MILK	CW	MARB	RE	FAT
8	-0.1	77	131	26	59	.48	.44	-.014

ANGUSGS
Powered by MegaGenetics



19



Lot **20**

Lees Stellar 2116

BD: 3/07/22

AAA #20623098

MOHNEN SUBSTANTIAL 272
SITZ STELLAR 726D
 SITZ PRIDE 200B

BENFIELD SUBSTANCE 8506
 MOHNEN GLYN MAWR ELBA 1758
 CONNEALY FINAL PRODUCT
 SITZ PRIDE 308Y

EXAR UPSHOT 0562B
ALICIA 801 0203 LAR
 ALICIA 801 LAR

SITZ UPWARD 307R
 EXAR BARBARA T020
 CROOK MT REALLY WINDY 141
 ALICIA 41-93 603 LAR

\$W
55
\$F
61
\$G
53
\$B
114
\$C
230

BW	205	Ratio	365	Ratio	SC	HP	Dam's Ratio	
76	676	107	1194	101	35.0	14.2	1/107	
CED	BW	WW	YW	MILK	CW	MARB	RE	FAT
0	2.4	65	106	17	35	.78	.48	.064

ANGUSGS
Powered by MegaGenetics

Lot **21**

Lees Stellar 2155

BD: 3/23/22

AAA #20623186

MOHNEN SUBSTANTIAL 272
SITZ STELLAR 726D
 SITZ PRIDE 200B

BENFIELD SUBSTANCE 8506
 MOHNEN GLYN MAWR ELBA 1758
 CONNEALY FINAL PRODUCT
 SITZ PRIDE 308Y

A A R TEN X 7008 S A
ALICIA 7111 LAR
 ALICIA FORESIGHT 5142 LAR

MYTTY IN FOCUS
 A A R LADY KELTON 5551
 S A V BISMARCK 5682
 ALICIAS FORESIGHT 714 LAR

\$W
70
\$F
94
\$G
58
\$B
151
\$C
261

BW	205	Ratio	365	Ratio	SC	HP	Dam's Ratio	
73	648	101	1272	105	38.0	12.1	4/106	
CED	BW	WW	YW	MILK	CW	MARB	RE	FAT
4	0.7	73	137	28	55	.80	.66	.047

ANGUSGS
Powered by MegaGenetics



21



Lot **22**

Lees Frontman 2197

BD: 3/31/22

AAA #20623105



APEX FRONTMAN 081
A A R FRONTMAN 3132
 A A R BLACKBIRD 9044

KESSLERS FRONTMAN R001
 APEXETTE PRIDE 9067
 B C MATRIX 4132
 A A R BLACKBIRD 7026

HA PRIME CUT 4493
ALICIA 8176 LAR
 ALICIA 5169 LAR

VERMILION SIRLOIN
 HA MISS BLACKCAP 9127
 EXAR UPSHOT 0562B
 ALICIA 6595 617 LAR

\$W
72
\$F
110
\$G
56
\$B
166
\$C
274

BW	205	Ratio	365	Ratio	SC	HP	Dam's Ratio	
79	652	101	1265	104	36.5	11.5	3/97	
CED	BW	WW	YW	MILK	CW	MARB	RE	FAT
3	1.0	70	134	36	65	.71	.64	.011



Lot **23**

Lees Resilient 2195

BD: 3/30/22

AAA #20627488



SITZ STELLAR 726D
SITZ RESILIENT 10208
 SITZ MISS BURGESS 1856

MOHNEN SUBSTANTIAL 272
 SITZ PRIDE 200B
 SITZ TOP GAME 561X
 SITZ MISS BURGESS 4381

CONNELY LEAD ON
SHOBANDA 906 LAR
 SHOBANDA 708 LAR

CONNELY LEADTIME
 ELIGENCE PLUS OF CONANGA
 WOODHILL FORESIGHT
 SHOBANDA RT 103 LAR

\$W
69
\$F
101
\$G
64
\$B
165
\$C
275

BW	205	Ratio	365	Ratio	SC	HP	Dam's Ratio	
78	657	102	1249	103	35.5	10.2	11/100	
CED	BW	WW	YW	MILK	CW	MARB	RE	FAT
5	1.3	80	140	21	61	.87	.78	.029



Lot **24**

Lees Stellar 2186

BD: 3/29/22

AAA #20623183



MOHNEN SUBSTANTIAL 272
SITZ STELLAR 726D
 SITZ PRIDE 200B

BENFIELD SUBSTANCE 8506
 MOHNEN GLYN MAWR ELBA 1758
 CONNEALY FINAL PRODUCT
 SITZ PRIDE 308Y

KM BROKEN BOW 002
PAULA LEAD 7114 LAR
 PAULA LEAD 5145 LAR

SUMMITCREST COMPLETE 1P55
 SUMMITCREST PRINCESS 0P12
 S A V BISMARK 5682
 PAULAS LEAD 163 LAR

\$W
81
\$F
116
\$G
63
\$B
180
\$C
306

BW	205	Ratio	365	Ratio	SC	HP	Dam's Ratio	
84	659	102	1235	102	36.0	13.2	4/101	
CED	BW	WW	YW	MILK	CW	MARB	RE	FAT
7	0.1	75	130	34	69	.87	.79	.039



DVAuction

www.dvauction.com

Watch & Bid online for FREE!

Can't make the sale?
Let DVAuction bring the sale to you!

Busy during the sale?
Let DVAuction represent your bid!

Visit www.dvauction.com & Register!

*High Speed Internet Access Required

Lot 25

Lees Bomber 2216

BD: 4/15/22

AAA #20620569

CASINO BOMBER N33
LEES BOMBER 0184
SHOBANDO 145 LAR

KM BROKEN BOW 002
CASINO ANNIE K48
R C BLACK CIGAR 0293
SHOBANDO 878 405 LAR

HA PRIME CUT 4493
PAULAS RIGHT TIME 9157 LAR
PAULAS RIGHT TIME 6188 LAR

VEMRILION SIRLOIN
HA MISS BLACKCAP 9127
CONNEALY CONSENSUS 7229
PAULAS RIGHT TIME 741 LAR

\$W	63
\$F	69
\$G	37
\$B	107
\$C	199

BW	205	Ratio	365	Ratio	SC	HP	Dam's Ratio	
97	645	100	1232	102	34.5	8.6	2/99	
CED	BW	WW	YW	MILK	CW	MARB	RE	FAT
7	2.7	66	109	25	36	.40	.47	.035

ANGUSGS
Powered by Sieger Genetics

Lot 26

Lees Ten X 2188

BD: 3/28/22

AAA #20623988

MYTTY IN FOCUS
A A R TEN X 7008 S A
A A R LADY KELTON 5551

S A F FOCUS OF E R
MYTTY COUNTESS 906
S A V ADAPTOR 2213
H S A F LADY KELTON 504B

\$W	54
\$F	82
\$G	39
\$B	121
\$C	203

HA COWBOY UP 5405
SIERRA LAR 8205
SIERRA 503 LAR

HA OUTSIDE 3008
HA BLACKCAP LADY 1602
SITZ ALLIANCE 6595
ALICIA 9440 LAR 904

BW	205	Ratio	365	Ratio	SC	HP	Dam's Ratio	
83	651	101	1217	100	37.0	8.6	2/100	
CED	BW	WW	YW	MILK	CW	MARB	RE	FAT
11	0.9	64	113	19	39	.42	.39	.009

ANGUSGS
Powered by Sieger Genetics



Lot 27

Lees Stellar 2185

BD: 3/28/22

AAA #20623180

MOHNEN SUBSTANTIAL 272
SITZ STELLAR 726D
SITZ PRIDE 200B

BENFIELD SUBSTANCE 8506
MOHNEN GLYN MAWR ELBA 1758
CONNEALY FINAL PRODUCT
SITZ PRIDE 308Y

HA COWBOY UP 5405
SIERRA 71886 LAR
SIERRA 259 LAR

HA OUTSIDE 3008
HA BLACKCAP LADY 1602
M V C C PACKER 1500
SIERRA 503 LAR

\$W	72
\$F	96
\$G	39
\$B	135
\$C	227

BW	205	Ratio	365	Ratio	SC	HP	Dam's Ratio	
81	640	100	1168	97	34.5	14.2	4/99	
CED	BW	WW	YW	MILK	CW	MARB	RE	FAT
1	1.1	74	136	32	62	.50	.31	.047

ANGUSGS
Powered by Sieger Genetics

Lot **28**

Lees Ten X 2117

BD: 3/08/22

AAA #20623948

MYTTY IN FOCUS
A A R TEN X 7008 S A
 A A R LADY KELTON 5551

S A F FOCUS OF E R
 MYTTY COUNTESS 906
 S A V ADAPTOR 2213
 H S A F LADY KELTON 504B

\$W
85
\$F
76
\$G
44
\$B
120
\$C
241

KMK ALLIANCE 6595 187
ERICA 0167 LAR
 ERICA 4108 LAR

SITZ ALLIANCE 6595
 G A R EXT 916
 S A V BISMARCK 5682
 ERICA 262 LAR

BW	205	Ratio	365	Ratio	SC	HP	Dam's Ratio	
68	600	95	1181	100	34.5	11.8	1/95	
CED	BW	WW	YW	MILK	CW	MARB	RE	FAT
10	0	72	122	34	43	.54	.49	.033

ANGUSGS
Powered by Regen Genetics



28

Lot **29**

Lees Creed 223 SJL

BD: 4/17/22

AAA #20620560

A A R CREED 5802
LEES CREED 9109
 PAULA LEED 7161 LAR

CONNELLY THUNDER
 A A R LADY GRACE 3844
 HA COWBOY UP 5405
 PAULAS LEAD 163 LAR

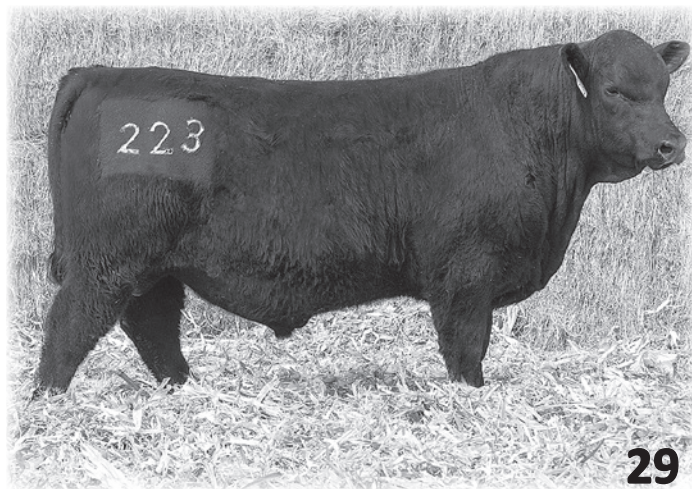
\$W
76
\$F
88
\$G
21
\$B
110
\$C
222

DIAMOND IN THE ROUGH
CLARA 820 SJL LAR
 CLARA SIS 909 LAR

DIAMOND JUSTICE 9015
 DIAMOND BLACK LADY 7206
 KMK ALLIANCE 6595 187
 CLARA 7365 BCBR

BW	205	Ratio	365	Ratio	SC	HP	Dam's Ratio	
74	667	104	1241	103	35.0	16.7	3/98	
CED	BW	WW	YW	MILK	CW	MARB	RE	FAT
2	1.1	73	124	30	55	.04	.44	.021

ANGUSGS
Powered by Regen Genetics



29

Lot **30**

Lees Resilient 2167

BD: 3/25/22

AAA #20623170

SITZ STELLAR 726D
SITZ RESILIENT 10208
 SITZ MISS BURGESS 1856

MOHNE SUBSTANTIAL 272
 SITZ PRIDE 200B
 SITZ TOP GAME 561X
 SITZ MISS BURGESS 4381

\$W
74
\$F
91
\$G
46
\$B
137
\$C
257

HA COWBOY UP 5405
PAULAS TIME 7164 LAR
 PAULAS RIGHT TIME 741 LAR

HA OUTSIDE 3008
 HA BLACKCAP LADY 1602
 LEACHMAN RIGHT TIME
 SODAK PAULA 6139-96

BW	205	Ratio	365	Ratio	SC	HP	Dam's Ratio	
84	661	103	1235	102	36.5	17.4	4/107	
CED	BW	WW	YW	MILK	CW	MARB	RE	FAT
4	1.4	76	138	28	54	.53	.58	.024

ANGUSGS
Powered by Regen Genetics

Lot **31**

Lees Creed 2128

BD: 3/24/22

AAA #20620561

A A R CREED 5802
LEES CREED 9109
 PAULA LEED 7161 LAR

CONNELLY THUNDER
 A A R LADY GRACE 3844
 HA COWBOY UP 5405
 PAULAS LEAD 163 LAR

\$W
60
\$F
116
\$G
37
\$B
154
\$C
267

HA PRIME CUT 4493
ALICIA 0148 LAR
 ALICIA 6194 LAR

VERMILION SIRLOIN
 HA MISS BLACKCAP 9127
 EXAR UPSHOT 0562B
 ALICIA 8001 LAR

BW	205	Ratio	365	Ratio	SC	HP	Dam's Ratio	
85	667	105	1233	104	35.0	15.9	1/105	
CED	BW	WW	YW	MILK	CW	MARB	RE	FAT
5	2.6	80	142	16	70	.25	.72	-.012

ANGUSGS
Powered by Regen Genetics

Lot 32 Lees Frontman 203 SHL

BD: 3/06/22

AAA #20623077

APEX FRONTMAN 081
A A R FRONTMAN 3132
A A R BLACKBIRD 9044

KESSLERS FRONTMAN R001
APEXETTE PRIDE 9067
B C MATRIX 4132
A A R BLACKBIRD 7026

LEACHMAN RIGHT TIME
RITO BOND LADY 007 SHL LAR
HA 4167 RITO LADY 9318

N BAR EMULATION EXT
LEACHMAN ERICA 0025
H A IMAGE MAKER 0415
HA RITO LADY 6825

\$W	58
\$F	110
\$G	28
\$B	137
\$C	250

BW	205	Ratio	365	Ratio	SC	HP	Dam's Ratio	
88	633	100	1215	102	34.5	15.9	1/100	
CED	BW	WW	YW	MILK	CW	MARB	RE	FAT
6	1.2	60	113	29	61	.20	.45	.036

ANGUSGS
Powered by Regen Genetics



Lot 33 Lees Resilient 225 SJL

BD: 3/21/22

AAA #20623172

SITZ STELLAR 726D
SITZ RESILIENT 10208
SITZ MISS BURGESS 1856



MOHNEN SUBSTANTIAL 272
SITZ PRIDE 200B
SITZ TOP GAME 561X
SITZ MISS BURGESS 4381

\$W	63
\$F	87
\$G	57
\$B	144
\$C	260

DIAMOND IN THE ROUGH
CLARA SIS 719 SJL LAR
CLARA 367 SIS LAR

DIAMOND JUSTICE 901S
DIAMOND BLACK LADY 7206
M V C C PACKER 1500
CLARA SIS 909 LAR

BW	205	Ratio	365	Ratio	SC	HP	Dam's Ratio	
83	587	91	1149	95	35.0	14.9	4/94	
CED	BW	WW	YW	MILK	CW	MARB	RE	FAT
4	1.5	66	119	27	46	.67	.66	-.023

ANGUSGS
Powered by Regen Genetics



Lot 34 Lees Frontman 2101 LAR

BD: 2/26/22

AAA #20623076

APEX FRONTMAN 081
A A R FRONTMAN 3132
A A R BLACKBIRD 9044

KESSLERS FRONTMAN R001
APEXETTE PRIDE 9067
B C MATRIX 4132
A A R BLACKBIRD 7026

\$W	87
\$F	83
\$G	48
\$B	131
\$C	265

CASINO BOMBER N33
SIERRA 0130 LAR
SIERRA 307 LAR

KM BROKEN BOW 002
CASINO ANNIE K48
S A V BISMARCK 5682
SIERRA 168 LAR

BW	205	Ratio	365	Ratio	SC	HP	Dam's Ratio	
77	725	115	1279	108	35.5	16.7	1/115	
CED	BW	WW	YW	MILK	CW	MARB	RE	FAT
14	-1.4	73	122	37	54	.49	.76	.003

ANGUSGS
Powered by Regen Genetics





Lot **35**

Lees Bomber 206 SHL

BD: 3/17/22

AAA #20625545

CASINO BOMBER N33
LEES BOMBER 0184
SHOBANDO 145 LAR

KM BROKEN BOW 002
CASINO ANNIE K48
R C BLACK CIGAR 0293
SHOBANDO 878 405 LAR

\$W
62
\$F
55
\$G
39
\$B
94
\$C
215

A A R FRONTMAN 3132
ERICA 906 SHL LAR
ERICA 395 LAR

APEX FRONTMAN 081
A A R BLACKBIRD 9044
HA BISMARCK 1666
ERICA 004 LAR

BW	205	Ratio	365	Ratio	SC	HP	Dam's Ratio	
73	654	102	1203	100	30.0	17.9	2/105	
CED	BW	WW	YW	MILK	CW	MARB	RE	FAT
15	-1.7	49	88	31	27	.58	.04	.047

ANGUSGS
Powered by Regen Genetics



Lot **36**

Lees Stellar 218 SJL

BD: 3/10/22

AAA #20623100

MOHNEN SUBSTANTIAL 272
SITZ STELLAR 726D
SITZ PRIDE 200B

BENFIELD SUBSTANCE 8506
MOHNEN GLYN MAWR ELBA 1758
CONNEALY FINAL PRODUCT
SITZ PRIDE 308Y

\$W
79
\$F
74
\$G
62
\$B
136
\$C
275

KG JUSTIFIED 3023
CLARA SIS 022 SJL LAR
CLARA SIS 718 SJL LAR

CONNEALY JUDGMENT
KG MISS MAGIC 1443
DIAMOND IN THE ROUGH
CLARA SIS 909 LAR

BW	205	Ratio	365	Ratio	SC	HP	Dam's Ratio	
83	659	104	1187	100	36.0	14.1	1/104	
CED	BW	WW	YW	MILK	CW	MARB	RE	FAT
8	-0.5	74	124	24	42	.96	.46	.050

ANGUSGS
Powered by Regen Genetics

Lot **37**

Lees Bomber 2192

BD: 3/29/22

AAA #20620565

CASINO BOMBER N33
LEES BOMBER 0184
SHOBANDO 145 LAR

KM BROKEN BOW 002
CASINO ANNIE K48
R C BLACK CIGAR 0293
SHOBANDO 878 405 LAR

\$W
51
\$F
65
\$G
53
\$B
118
\$C
225

KG JUSTIFIED 3023
ALICIA 9136 LAR
ALICIA 4160 LAR

CONNEALY JUDGMENT
KG MISS MAGIC 1443
APEX WINDY 078
ALICIA 6595 617 LAR

BW	205	Ratio	365	Ratio	SC	HP	Dam's Ratio	
88	646	100	1177	97	37.0	18.2	2/100	
CED	BW	WW	YW	MILK	CW	MARB	RE	FAT
3	2.6	61	108	20	32	.83	.24	.052

ANGUSGS
Powered by Regen Genetics



Lot **38**

Lees Resilient 2156

BD: 3/23/22

AAA #20623171

SITZ STELLAR 726D
SITZ RESILIENT 10208
 SITZ MISS BURGESS 1856

MOHNEN SUBSTANTIAL 272
 SITZ PRIDE 200B
 SITZ TOP GAME 561X
 SITZ MISS BURGESS 4381

HA COWBOY UP 5405
SHOBANDA 7159 LAR
 SHOBADA 070 LAR

HA OUTSIDE 3008
 HA BLACKCAP LADY 1602
 RR CIGAR 7151
 SHOBANDA 878 337 LAR

\$W
65
\$F
78
\$G
42
\$B
120
\$C
231

BW	205	Ratio	365	Ratio	SC	HP	Dam's Ratio	
91	627	98	1217	101	37.5	16.4	4/105	
CED	BW	WW	YW	MILK	CW	MARB	RE	FAT
3	3.5	72	126	30	40	.47	.26	-.022

ANGUSGS
Powered by Regen Genetics

Lot **39**

Lees Stellar 2170

BD: 3/26/22

AAA #20623242

MOHNEN SUBSTANTIAL 272
SITZ STELLAR 726D
 SITZ PRIDE 200B

BENFIELD SUBSTANCE 8506
 MOHNEN GLYN MAWR ELBA 1758
 CONNEALY FINAL PRODUCT
 SITZ PRIDE 308Y

H A IMAGE MAKER 0415
ISABELLA 005 LAR
 ISABELLA 2106 LAR

HERO 6267 OF R R 2418
 H A RITO BLACKCAP 9038
 ROCKN D AMBUSH 1531
 LCC ISABELLA K3056

\$W
73
\$F
55
\$G
28
\$B
83
\$C
183

BW	205	Ratio	365	Ratio	SC	HP	Dam's Ratio	
74	661	103	1127	93	35.0	10.8	10/104	
CED	BW	WW	YW	MILK	CW	MARB	RE	FAT
9	-1.7	66	100	27	34	.21	.49	.047

ANGUSGS
Powered by Regen Genetics

Lot **40**

Lees Resilient 2173

BD: 3/26/22

AAA #20623178

SITZ STELLAR 726D
SITZ RESILIENT 10208
 SITZ MISS BURGESS 1856

MOHNEN SUBSTANTIAL 272
 SITZ PRIDE 200B
 SITZ TOP GAME 561X
 SITZ MISS BURGESS 4381

APEX WINDY 078
PAULAS RIGHT TIME 6175 LAR
 PAULAS RIGHT TIME 741 LAR

H A R B WINDY 702 JH
 APEXETTE LUCY 6037
 LEACHMAN RIGHT TIME
 SODAK PAULA 6139-96

\$W
81
\$F
70
\$G
46
\$B
116
\$C
224

BW	205	Ratio	365	Ratio	SC	HP	Dam's Ratio	
89	624	97	1149	95	35.0	15.5	5/95	
CED	BW	WW	YW	MILK	CW	MARB	RE	FAT
3	2.4	78	120	31	45	.46	.77	.016

ANGUSGS
Powered by Regen Genetics

Lot **41**

Lees Resilient 2176

BD: 3/27/22

AAA #20623218

SITZ STELLAR 726D
SITZ RESILIENT 10208
 SITZ MISS BURGESS 1856

MOHNEN SUBSTANTIAL 272
 SITZ PRIDE 200B
 SITZ TOP GAME 561X
 SITZ MISS BURGESS 4381

A A R TEN X 7008 S A
PAULA 4159 LAR
 PAULA 934 LAR

MYTTY IN FOCUS
 A A R LADY KELTON 5551
 HA PROGRAM 5652
 PAULA 878 739 LAR

\$W
80
\$F
97
\$G
51
\$B
148
\$C
292

BW	205	Ratio	365	Ratio	SC	HP	Dam's Ratio	
69	603	94	1181	98	35.5	23.8	7/100	
CED	BW	WW	YW	MILK	CW	MARB	RE	FAT
12	-1.8	71	131	37	60	.72	.33	.025

ANGUSGS
Powered by Regen Genetics



Lot **42**

Lees Resilient 2172

BD: 3/26/22

AAA #20623173

SITZ STELLAR 726D
SITZ RESILIENT 10208
 SITZ MISS BURGESS 1856

MOHNEN SUBSTANTIAL 272
 SITZ PRIDE 200B
 SITZ TOP GAME 561X
 SITZ MISS BURGESS 4381

BASIN EXCITEMENT
ALICIA 7181 LAR
 ALICIA 801 LAR

BASIN EXPEDITION R156
 BASIN LADY S532 AK
 CROOK MT REALLY WINDY 141
 ALICIA 41-93 603 LAR

\$W
69
\$F
75
\$G
45
\$B
120
\$C
249

BW	205	Ratio	365	Ratio	SC	HP	Dam's Ratio	
84	601	93	1174	97	34.5	16.3	4/99	
CED	BW	WW	YW	MILK	CW	MARB	RE	FAT
11	0.5	72	125	22	39	.56	.42	.020

ANGUSGS
Powered by Regen Genetics



Lot **43**

Lees Stellar 2196

BD: 3/31/22

AAA #20623181

MOHNEN SUBSTANTIAL 272
SITZ STELLAR 726D
SITZ PRIDE 200B

BENFIELD SUBSTANCE 8506
MOHNEN GLYN MAWR ELBA 1758
CONNEALY FINAL PRODUCT
SITZ PRIDE 308Y

\$W
61
\$F
70
\$G
47
\$B
117
\$C
225

DIAMOND IN THE ROUGH
ALICIA 7167 LAR
ALICIA 228 LAR

DIAMOND JUSTICE 901S
DIAMOND BLACK LADY 7206
HA PROGRAM 5652
ALICIA RIGHT TIME 202 LAR

BW	205	Ratio	365	Ratio	SC	HP	Dam's Ratio	
83	599	93	1140	94	35.5	12.1	4/95	
CED	BW	WW	YW	MILK	CW	MARB	RE	FAT
3	0.3	70	116	17	40	.59	.55	.042

ANGUSGS
Powered by Regen Genetics

Lot **44**

Lees Stellar 2157

BD: 3/23/22

AAA #20623235

MOHNEN SUBSTANTIAL 272
SITZ STELLAR 726D
SITZ PRIDE 200B

BENFIELD SUBSTANCE 8506
MOHNEN GLYN MAWR ELBA 1758
CONNEALY FINAL PRODUCT
SITZ PRIDE 308Y

\$W
69
\$F
100
\$G
54
\$B
155
\$C
265

A A R TEN X 7008 S A
SHOANDO 320 LAR
SHOBANDA 906 LAR

MYTTY IN FOCUS
A A R LADY KELTON 5551
CONNEALY LEAD ON
SHOBANDA 708 LAR

BW	205	Ratio	365	Ratio	SC	HP	Dam's Ratio	
79	591	92	1138	94	36.0	13.2	8/100	
CED	BW	WW	YW	MILK	CW	MARB	RE	FAT
8	-1.2	66	115	29	59	.83	.46	.070

ANGUSGS
Powered by Regen Genetics



44

Lot **45**

Lees Bomber 2182

BD: 3/27/22

AAA #20620564

CASINO BOMBER N33
LEES BOMBER 0184
SHOBANDO 145 LAR

KM BROKEN BOW 002
CASINO ANNIE K48
R C BLACK CIGAR 0293
SHOBANDO 878 405 LAR

\$W
67
\$F
83
\$G
36
\$B
119
\$C
216

HA PRIME CUT 4493
ALICIA 9146 LAR
ALICIA 5186 LAR

VERMILION SIRLOIN
HA MISS BLACKCAP 9127
CONNEALY CONSENSUS 7229
ALICIA 801 LAR

BW	205	Ratio	365	Ratio	SC	HP	Dam's Ratio	
81	632	98	1168	96	35.0	14.0	2/102	
CED	BW	WW	YW	MILK	CW	MARB	RE	FAT
5	1.9	70	109	24	46	.26	.67	.007

ANGUSGS
Powered by Regen Genetics

Lot **46**

Lees Coalition 2147

BD: 3/21/22

AAA #20623182

HF SYNDICATE 213Z
U-2 COALITION 206C
U2 ERELITE 109Z

CONNEALY CONSENSUS 7229
HF MISS BLACKCAP 27R
YOUNG DALE XCLUSIVE 25X
U-2 ERELITE 1X

\$W
70
\$F
108
\$G
22
\$B
130
\$C
243

DIAMOND IN THE ROUGH
PAULA 7152 LAR
PAULA 361 LAR

DIAMOND JUSTICE 901S
DIAMOND BLACK LADY 7206
KESSLERS FRONTMAN R001
PAULA 914 LAR

BW	205	Ratio	365	Ratio	SC	HP	Dam's Ratio	
83	659	102	1189	98	35.0	9.9	4/99	
CED	BW	WW	YW	MILK	CW	MARB	RE	FAT
7	0.5	63	110	33	61	.05	.50	.026

ANGUSGS
Powered by Regen Genetics



Lot **47**

Lees Bomber 212 SHL

BD: 4/01/22

AAA #20620559

CASINO BOMBER N33
LEES BOMBER 0184
 SHOBANDO 145 LAR

KM BROKEN BOW 002
 CASINO ANNIE K48
 R C BLACK CIGAR 0293
 SHOBANDO 878 405 LAR

A A R COUNSELOR 5546
ERICA 905 SHL LAR
 ERICA 3112 LAR

CONNEALY COUNSELOR
 A A R AIRY PRIMROSE 9595
 HA BISMARCK 1666
 ERICA 027 LAR

\$W	61
\$F	78
\$G	36
\$B	114
\$C	214

BW	205	Ratio	365	Ratio	SC	HP	Dam's Ratio	
89	591	92	1148	95	36.5	16.6	2/93	
CED	BW	WW	YW	MILK	CW	MARB	RE	FAT
8	1.1	64	101	23	40	.40	.34	.029

ANGUSGS
 Powered by Regen Genetics



Lot **48**

Lees Coalition 2190

BD: 3/29/22

AAA #20623192

HF SYNDICATE 213Z
U-2 COALITION 206C
 U2 ERELITE 109Z

CONNEALY CONSENSUS 7229
 HF MISS BLACKCAP 27R
 YOUNG DALE XCLUSIVE 25X
 U-2 ERELITE 1X

APEX WINDY 078
PAULA 6126 LAR
 PAULA 024 LAR

H A R B WINDY 702 JH
 APEXETTE LUCY 6037
 R C BLACK CIGAR 0293
 PAULAS DESIGN 878 742 LAR

\$W	41
\$F	69
\$G	34
\$B	103
\$C	187

BW	205	Ratio	365	Ratio	SC	HP	Dam's Ratio	
89	597	93	1141	94	35.5	8.3	5/93	
CED	BW	WW	YW	MILK	CW	MARB	RE	FAT
7	0.8	44	90	26	27	.33	.15	-.016

ANGUSGS
 Powered by Regen Genetics

Lot **49**

Lees Coalition 2166

BD: 3/25/22

AAA #20623201

HF SYNDICATE 213Z
U-2 COALITION 206C
 U2 ERELITE 109Z

CONNEALY CONSENSUS 7229
 HF MISS BLACKCAP 27R
 YOUNG DALE XCLUSIVE 25X
 U-2 ERELITE 1X

M V C C PACKER 1500
ALICIA 363 LAR
 ALICIA 931 LAR

CONNEALY PACKER 547
 MVCC MISSY 222-1194
 HA PROGRAM 5652
 ALICIA 607 LAR

\$W	51
\$F	92
\$G	39
\$B	130
\$C	248

BW	205	Ratio	365	Ratio	SC	HP	Dam's Ratio	
92	572	89	1132	94	34.5	14.6	7/95	
CED	BW	WW	YW	MILK	CW	MARB	RE	FAT
4	3.0	52	96	32	46	.33	.57	-.004

ANGUSGS
 Powered by Regen Genetics



Lot
50

Lees Stellar 2180

BD: 3/27/22

AAA #20623204

MOHNEN SUBSTANTIAL 272
SITZ STELLAR 726D
SITZ PRIDE 200B

BENFIELD SUBSTANCE 8506
MOHNEN GLYN MAWR ELBA 1758
CONNEALY FINAL PRODUCT
SITZ PRIDE 308Y

APEX WINDY 078
PAULAS RIGHT TIME 6171 LAR
PAULAS RIGHT TIME 741 LAR

H A R B WINDY 702 JH
APEXETTE LUCY 6037
LEACHMAN RIGHT TIME
SODAK PAULA 6139-96

\$W	53
\$F	57
\$G	46
\$B	103
\$C	204

BW	205	Ratio	365	Ratio	SC	HP	Dam's Ratio	
91	576	90	1086	90	35.5	13.8	5/95	
CED	BW	WW	YW	MILK	CW	MARB	RE	FAT
4	0.4	45	84	32	24	.67	.29	.051

ANGUS
Powered by Regen Genetics



Suggested* Sale Terms & Conditions

American Angus Association • February 18, 2009

Unless otherwise expressly stated in these sale terms and conditions or any other written agreement between the parties relating to the sale of Angus cattle under these sale terms and conditions, seller makes no other warranties, express or implied, including any implied warranty of merchantability or fitness for a particular purpose, even if such purpose is known to the parties.

The remedies provided in these sale terms and conditions are the exclusive remedies of the buyer, or any party claiming through the buyer, and under no circumstances will the seller be liable for any incidental, indirect, special, consequential, punitive or exemplary damages under any indemnity provision or otherwise.

Terms of Sale

Bidding

1. Each animal will be sold to the highest bidder. The person in charge will settle any disputes as to bids, and his decision on such matters will be final.

Announcements

1. If there is any inconsistency in the terms of any sale book, supplement sheet or day-of-sale announcement, (i) the day-of-sale announcement will control over both the supplement sheet and the sale book, and (ii) the supplement sheet will control over the sale book.

Cash Sale

1. All sales are for cash unless satisfactory credit arrangements, including any possible reservation of security interest by the vendor, have been made with the vendor prior to sale.

Buyer's Risk

1. The risk of loss and injury of each animal passes to the buyer as soon as it is sold; but it is the obligation of the seller to ensure that animals are fed and cared for free of charge to the buyer until loaded for shipment or until the expiration of 48 hours after the sale, whichever occurs sooner.

Identification

1. The seller must ensure that each animal has a readable permanent identification mark (e.g., tattoo, hot-iron brand or freeze brand) corresponding to its registration.
2. The buyer must check all permanent identification marks for accuracy.
3. In those cases where a nickname is used by the seller, the nickname must also be accompanied by the official registered name and number of the animal.

Certificate of Registration

1. A transferred certificate of registration must be furnished by the seller free of charge to the buyer for each animal within 45 days following the later of the date of sale and receipt of full payment.

Artificial Insemination (AI) Service Certificates

1. Upon the buyer's request, AI Service Certificates must be furnished by the seller free of charge to the buyer for all females bred artificially to bulls not owned by the seller.

Guarantees

Health

1. Unless otherwise announced, the seller guarantees that all animals are eligible for interstate shipment as required by federal regulations.

Conformance with Registration

1. The seller guarantees that all animals are registered under the rules of the American Angus Association.
2. The seller guarantees to the buyer that all animals conform to the registration certificate as entered in the Herd Book of the American Angus Association.

Pedigree

1. The seller guarantees to the buyer that the pedigree, performance data and individual genetic defect designation of the animal, as represented in any sales materials (including any sale book, supplement sheet or day-of-sale announcement), is accurate.
2. The absence of any such designation on the pedigree of an animal, in a sale book, does not establish that the animal in question is not a carrier of any such genetic defect or genetic factor.
3. In those cases where a commonly understood nickname is used by the seller, the seller guarantees the pedigree of the animal based on the commonly understood nickname.

Sex

1. Unless otherwise represented by the seller, there are no guarantees that offspring will be of a particular sex.

Breeding Guarantees

1. The seller guarantees that all bulls are breeders, but only if such bulls are at least 12 months old at the time of sale and have not been allowed to run with the herd until at least 14 months of age. A bull that settles a cow by natural service and passes a fertility test made by competent veterinarians mutually agreed upon by the buyer and the seller, during any six-month period of trial (provided for in paragraph 2 of the section entitled "Options and privileges of return or adjustment") will be considered a breeder. Unless otherwise agreed by the buyer and the seller, the seller makes no guarantees with respect to the ability to freeze semen.

2. The seller guarantees that all animals are breeders, with the exception of: (a) calves under 12 months of age at the time of the sale; (b) animals shown after the sale has occurred (in such cases, the breeding guarantees, if any, will be those guarantees UNLESS OTHERWISE EXPRESSLY STATED IN THESE SALE TERMS AND CONDITIONS OR ANY OTHER WRITTEN AGREEMENT BETWEEN THE PARTIES RELATING TO THE SALE OF ANGUS CATTLE UNDER THESE SALE TERMS AND CONDITIONS. SELLER MAKES NO OTHER WARRANTIES, EXPRESS OR IMPLIED, INCLUDING ANY IMPLIED WARRANTY OF MERCHANTABILITY OR FITNESS FOR A PARTICULAR PURPOSE, EVEN IF SUCH PURPOSE IS KNOWN TO THE PARTIES.

THE REMEDIES PROVIDED IN THESE SALE TERMS AND CONDITIONS ARE THE EXCLUSIVE REMEDIES OF THE BUYER, OR ANY PARTY CLAIMING THROUGH THE BUYER, AND UNDER NO CIRCUMSTANCES WILL THE SELLER BE LIABLE FOR ANY INCIDENTAL, INDIRECT, SPECIAL, CONSEQUENTIAL, PUNITIVE OR EXEMPLARY DAMAGES UNDER ANY INDEMNITY PROVISION OR OTHERWISE.

* For voluntary consideration and use by sellers in their independent business judgment.

as are agreed upon between the seller and the buyer; (c) injury or disease occurring after the sale; and (d) gross negligence or willful misconduct on the part of the buyer.

3. "Safe-in-calf" females are guaranteed by the seller to have been examined by a competent veterinarian and determined to be in calf.

4. "Served" females are not guaranteed to be in calf.

5. "Pasture-bred" females have been exposed but are not guaranteed to be in calf.

6. "Open" females have not been served and are guaranteed by the seller to be without calf.

7. Donor females:

a. Unless otherwise agreed by the buyer and the seller, a female that has been used in an embryo transfer program is not guaranteed to be a breeder after the date of the sale.

b. Unless otherwise agreed by the buyer and the seller, a female is not guaranteed to be a breeder after the date of the sale, when that female is to be used, or attempted to be used, in an embryo transfer program.

8. The seller makes the following guarantees with respect to all "pregnant recipients": (i) that the female is pregnant, (ii) that the resulting calf is of the pedigree represented, and (iii) that the resulting calf is of the sex represented (if so represented).

Semen

1. Unless otherwise agreed by the buyer and the seller, with respect to the sale of semen the seller makes no guarantees with respect to the performance or characteristics of such semen and the buyer is purchasing such semen "as is."

Embryos

Unless otherwise agreed by the buyer and the seller, with respect to the sale of embryos the seller makes no guarantees with respect to the performance or characteristics of such embryos and the buyer is purchasing such embryos "as is."

Options and Privileges of Return or Adjustment

1. Except as provided in paragraph 2 of this section, all claims for adjustment or refund must be made in writing on or before the later of (i) six months after the sale date and (ii) the date on which the animal reaches 30 months of age.

2. All claims relating to the misrepresentation of service sire and all claims relating to paragraphs 10 and 11 of this section must be made in writing on or before the second anniversary of the date of sale.

3. If an animal is claimed to be a non-breeder, the animal may be returned to the seller if in good condition and complying with the health requirements of the seller's state. The seller is entitled to six months trial following the return of the animal in which to prove that the animal is a breeder. If at the end of the six-month period the seller is unable to prove the animal is a breeder, the seller must, at the option of the buyer, replace the animal with another of equal value or refund the purchase price. The return of the full purchase price will be deemed full satisfaction and settlement. Any expense incurred for transporting an animal claimed to be a non-breeder will be the responsibility of the buyer, except that the seller will be responsible for transportation costs in excess of the distance between the buyer's farm and the location where the sale took place. If the seller proves the animal to be a breeder, it will be the obligation of the buyer to take delivery of the animal and pay all transportation expenses.

4. If a female sold as "safe in calf" proves not to be in calf, the buyer may receive service from the bull previously used, if available. If the bull is not available, the seller must make a satisfactory adjustment on the purchase price to the buyer or, at the buyer's option, refund the purchase price upon return of the animal to the farm of the seller. Any adjustment provided for in this paragraph will absolve the seller from further liability, except in if such female proves to be a non-breeder. If a female represented as "safe in calf" to a certain bull at the time of sale proves to have been bred to a different bull, the seller must make a satisfactory adjustment on the purchase price to the buyer or, at the buyer's option, refund the purchase price upon return of the animal to the farm of the seller (adjustments will not be considered to be a breeding fee or an allocation of the purchase price to any unborn calf).

5. If a female sold as "open" proves to be with calf, the buyer may return the animal to the farm of the seller prior to calving for a refund of the full purchase price or for another animal of equal value, whichever is acceptable to the buyer. The Seller is responsible for all transportation expenses.

6. Cows with calves at their side are presumed to be breeders with no further fertility guarantee.

7. White skin or hair must not be painted or altered. If such painting or alteration has occurred, the buyer may return the animal to the farm of the seller for a refund of the full purchase price or for another animal of equal value, whichever is acceptable to the buyer.

8. If an animal (including the offspring of a pregnant recipient) is sold and at a later date proves not to have been eligible for registration under the rules of the American Angus Association, the seller must make a satisfactory adjustment on the purchase price to the buyer, or at the option of the buyer, refund the purchase price upon the return of the animal to the farm of the seller.

9. If (i) an animal is sold (including the offspring of a pregnant recipient) and through DNA-marker-typing is proven to have incorrect parentage, as represented by the certificate of registration, and for which parentage can be determined, or (ii) the resulting calf of a pregnant recipient is not of the sex represented, the seller is obligated to make a satisfactory adjustment on the purchase price to the buyer or, at the buyer's option, refund the purchase price upon the return of the animal to the farm of the seller.

10. Except as provided in paragraphs 4 and 6 of this section, all transportation expenses incurred will be the responsibility of the buyer, except that the seller will be responsible for transportation costs in excess of the distance between the buyer's farm and the location where the sale took place.

Retention of Genetic Material

1. Unless otherwise agreed in writing by the seller and the buyer, the seller will not retain any genetic material of any animal (including embryos and semen) for the purpose of cloning.

Disclosure of Test Results for Known Genetic Defects and Factors

The seller shall have an affirmative duty to notify the buyer of any test results for genetic defects or genetic factors not otherwise reflected on an animal's pedigree.

Optional Guarantee: Genetic Defects

1. The buyer and seller may determine the scope and duration of a guarantee, if any, on an individual basis. The seller may, but is not required, to provide a guarantee to the buyer relating to genetic defects.

2. Nothing contained herein should be construed to relieve the parties from complying fully with all the rules and policies of the Association relating to genetic defects generally or individually.

Miscellaneous

1. The above terms and conditions of sale constitute a contract between the buyer and the seller of each animal and are equally binding upon both parties. Each sale or resale of an animal constitutes a separate transaction.

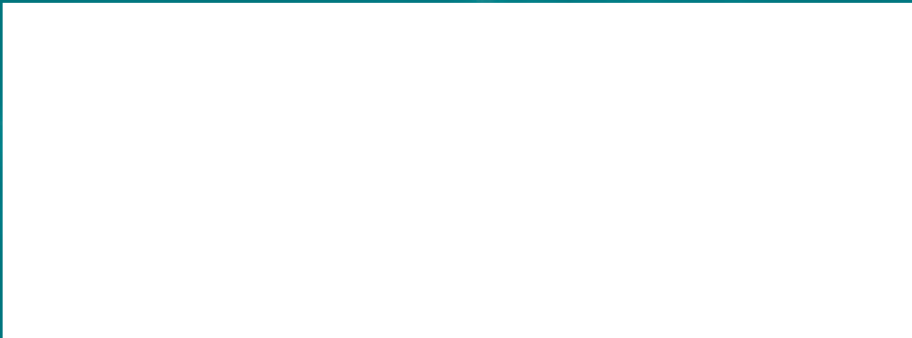
2. Neither the sponsor or sponsors, the sale manager, nor any other person connected with the management of the sale, assumes any liability, legal or otherwise.

3. These sale terms and conditions and all rights, obligations and duties arising hereunder and all disputes arising hereunder will be construed in accordance with, and governed by, the laws of the state in which the sale of the animal or animals occurs, without giving effect to such state's choice of law rules.

* For voluntary consideration and use by sellers in their independent business judgment.

Lee Angus Ranch
16503 81st St SW
Rhame ND 58651

FIRST CLASS MAIL
U.S. POSTAGE
PAID
Permit No. 222
BISMARCK, ND
58501



A2Z PRINTING - BOWMAN ND - 701-523-4656 • 888-768-4656