

Lee Angus Ranch

Selling 70 Registered Angus Bulls

Thursday, April 30, 2026

1:00 PM MDST

Bowman Livestock Marketing

Bowman, ND

Raymond, Chris, Sterling, Morgan & Sierra Lee
16503 81st St SW
Rhame, ND 58651
www.leeangusranch.com





Lee Angus Ranch

BULL SALE

Welcome Cattlemen...

To our Annual Production Sale, Thursday, April 30, 2026 at 1:00 p.m. (MDST) at Bowman Livestock Marketing, Bowman, ND.

The bulls are guaranteed to be breeders. To help each bull reach his full genetic potential, they were fed a high roughage ration. At birth the bulls were vaccinated with Alpha 7 C&D and at branding were vaccinated with Vista Once. They were preconditioned with Vision 7 with Somnus and Vista Once. At weaning they received Vista 5 plus Vista 7 with Somnus and were poured with Symentec and Cleanup II. The bulls will be semen tested before sale day and scrotal measurements will be available sale day.

There will be bulls with added growth, calving ease and extra length, abundant amount of depth of body and spring of rib. We are featuring sons of many of the top bulls in the Angus breed.

As in the past, if you haul your bulls sale day we will deduct \$50.00 per bull. If we can be of any assistance with your bull selection, please feel free to call Raymond at 701-279-5717. Come join us for a free noon meal and look over this year's offering. Hope to see you April 30th!

THURSDAY, APRIL 30, 2026
1:00 PM MDST
Bowman Livestock Marketing
Bowman, ND

- Selling -

Performance Tested Registered Yearling
70 ANGUS BULLS

General Information

ACCOMMODATIONS: Bowman has several nice motels. Call us, and we will reserve a room for you.

TRUCKING: Free delivery up to 300 miles.

\$50 DISCOUNT per bull if you haul them home sale day.

HEALTH: All have had Alpha 7 C&D, Vista Once, Vision 7 with Somnus and Vista 5 vaccinations and poured with Symentec and Cleanup II.

TERMS: Cash

GUARANTEE: All animals selling under the rules and regulations adopted by the American Angus Association, and bulls will have passed a semen evaluation test.

VIDEOS & PHOTOS: By Annette Steffan

Sale Day Toll Free
877-211-0600

Auctioneer
Seth Weishaar

Videos can be viewed at
dvauction.com or www.leeangusranch.com

For more information contact

Lee Angus Ranch

Raymond, Chris, Sterling, Morgan & Sierra Lee

16503 81st St SW
Rhame ND 58651
www.leeangusranch.com

701-279-5717 • Raymond - 701-440-0669
Sterling - 701-440-8095
Sierra - 701-440-1028

REFERENCE SIRE

Sire A B Bar Black Mass 6273

BD: 3/10/2023

AAA #*20679367

GEN: HD50K

B BAR WINDY 79	CROOK MT REALLY WINDY 141	\$W	71
B BAR BLACK MASS 3045	B BAR LADY JEWEL 116	\$F	117
B BAR QUEEN 304	SITZ RLS ALLIANCE 7164	\$G	26
	B BAR QUEEN 557	\$B	144
SRS BALANCE 0609B	TOMBSTONE 050	C	290
B BAR LADY JEWEL 627	OX BOW MANOR 443		
B BAR LADY JEWEL 388	PRA FRONTRUNNER 108		
	B BAR LADY JEWEL 138		

CED	BW	WW	YW	MILK	CW	MARB	RE	FAT
5	0.7	71	119	28	66	.03	1.01	.022

ANGUSGS
Powered by Meggen Genetics

Sire B Lees Frontman 0166

BD: 3/23/2020

AAA #*19940995

GEN: Angus GS

APEX FRONTMAN 081	KESSLERS FRONTMAN R001	\$W	72
A A R FRONTMAN 3132	APEXETTE PRIDE 9067	\$F	102
A A R BLACKBIRD 9044	B C MATRIX 4132	\$G	39
	A A R BLACKBIRD 7026	\$B	141
HA COWBOY UP 5405	HA OUTSIDE 3008	C	253
SHOBANDA 7159 LAR	HA BLACKCAP LADY 1602		
SHOBADA 070 LAR	RR CIGAR 7151		
	SHOBANDA 878 337 LAR		

CED	BW	WW	YW	MILK	CW	MARB	RE	FAT
8	1.3	75	140	29	57	.41	.37	0

ANGUSGS
Powered by Meggen Genetics

A.I. REFERENCE SIRE



Sire C Basin Keystone 2021

BD: 1/11/2022

AAA #*20322583

AMF-CAF-D2F-DDF-M1F-NHF-OHF-OSF-RDF

GEN: HD50K

G A R BIG STEP K715	G A R SURE FIRE	\$W	71
EZAR STEP UP 9178	CHAIR ROCK PROPHET 3131	\$F	119
BASIN LUCY 4261	EXAR DENVER 2002B	\$G	102
	BASIN LUCY 1022	\$B	222
EXAR MONUMENTAL 6056B	3F EPIC 4631	C	363
BASIN JOY 9140	FWY 7008 OF C085 4029		
BASIN JOY 5367	BASIN RAINMAKER P175		
	BASIN JOY 1036		

CED	BW	WW	YW	MILK	CW	MARB	RE	FAT
8	0	69	132	31	68	1.58	1.07	.035

ANGUSGS
Powered by Meggen Genetics



Sire D Hoover No Doubt

BD: 1/29/2014

AAA #*17882682

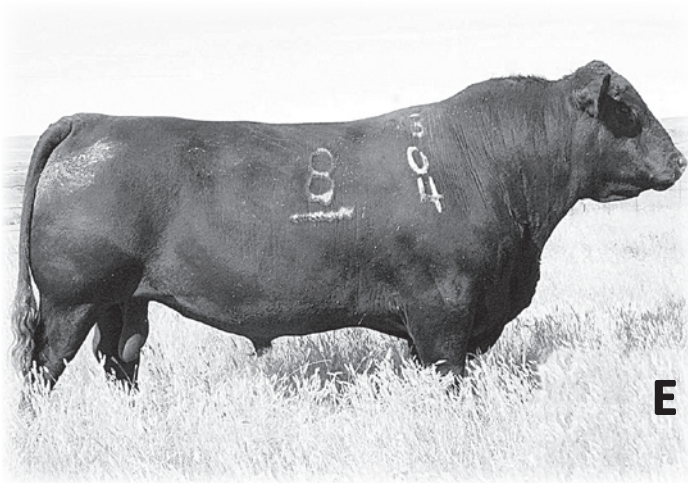
AMF-CAF-D2F-DDF-M1F-NHF-OHF-OSF-RDF

GEN: HD50K

MOGCK SURE SHOT	MYTTY IN FOCUS	\$W	48
MOGCK BULLSEYE	MOGCK BLACK LASS 2065	\$F	124
MOGCK MARY 1255	K C F BENNETT COALITION SCC	\$G	69
	MOGCK MARY C 1757	\$B	193
SYDGEN C C & 7	S A F CONNECTION	C	293
MISS BLACKCAP ELLSTON J2	SYDGEN FOREVER LADY 4087		
MISS BLACKCAP ELLSTON D154	TC GRIDIRON 258		
	MISS BLACKCAP ELLSTON A269		

CED	BW	WW	YW	MILK	CW	MARB	RE	FAT
-1	4.7	75	139	10	66	.91	.96	.025

ANGUSGS
Powered by Meggen Genetics



Sire **E** **B Bar Black Mass 3045**
 BD: 2/09/2015 AAA #*18137165
 GEN: HD50K

CROOK MT REALLY WINDY 141		A A R REALLY WINDY 1205	\$W
B BAR WINDY 79		REVOLUTION 155 OF CROOK MT	58
B BAR LADY JEWEL 116		RA JOE HERO	\$F
		B BAR LADY JEWEL 884	98
			\$G
			34
SITZ RLS ALLIANCE 7164		SITZ ALLIANCE 6595	\$B
B BAR QUEEN 304		SITZ RLS EISA EVERGREEN 4451	132
B BAR QUEEN 557		S A V BUSHWACKER 3119	C
		B BAR QUEEN TIME ET 4014	267

CED	BW	WW	YW	MILK	CW	MARB	RE	FAT
8	-0.8	55	90	25	40	.20	.98	.022



Sire **F** **Baldrige Badger**
 BD: 5/12/2018 AAA #*19478648
 AMF-CAF-D2F-DDF-M1F-NHF-OHF-OSF-RDF GEN: HD50K

MOGCK BULLSEYE		MOGCK SURE SHOT	\$W
HOOVER NO DOUBT		MOGCK MARY 1255	56
MISS BLACKCAP ELLSTON J2		SYDGEN C C & 7	\$F
		MISS BLACKCAP ELLSTON D154	115
			\$G
			44
STYLES UPGRADE J59		SITZ UPWARD 307R	\$B
BALDRIDGE ISABEL Y69		PLAINVIEW LASSIE 71B	159
BALDRIDGE ISABEL T935		BALDRIDGE KABOOM K243 KCF	C
		BALDRIDGE ISABEL P4527	278

CED	BW	WW	YW	MILK	CW	MARB	RE	FAT
-3	3.7	86	146	10	67	.33	1.07	-.008



Sire **G** **Sitz Milestone**
 BD: 2/01/2020 AAA #*19677875
 AMF-CAF-D2F-DDF-M1F-NHF-OHF-OSF-RDF GEN: Angus GS

POSS ACHIEVEMENT		POSS LASTING IMPACT 3118	\$W
SITZ ACCOMPLISHMENT 720F		POSS ERICA 327	68
SITZ BARBARAMERE NELL 166D		S A V RESOURCE 1441	\$F
		SITZ BARBARAMERE NELL 14Y	105
			\$G
			46
SITZ UPWARD 307R		CONNELLY ONWARD	\$B
TALON EVERELDA 0179		SITZ HENRIETTA PRIDE 81M	151
RIVERBEND EVERELDA 3179		SITZ ALLIANCE 6595	C
		SHADYBROOK EVER ENTENSE 482G	270

CED	BW	WW	YW	MILK	CW	MARB	RE	FAT
2	2.8	82	147	21	69	.47	.87	.030





Sire H M Diamond Ranahan 111
 BD: 2/18/2021 AAA #*20258264
 AMF-CAF-D2F-DDF-M1F-NHF-OHF-OSF-RDF GEN: Angus GS

U-2 COALITION 206C	HF SYNDICATE 2137	\$W	80
S WRANGLER 830	U2 ERELITE 109Z	\$F	133
S ERICA 6196	S WHITLOCK 179	\$G	66
	S ERICA 3441	\$B	199
LISCO GRAND FINALE 4103	LISCO FINALE 902	c	330
M DIAMOND ERICA 049	LISCO LASS 201		
M DIAMOND ERICA 907	MYSTIC HILL BALANCE 4134		
	M DIAMOND ERICA 764		

CED	BW	WW	YW	MILK	CW	MARB	RE	FAT
11	0.8	82	143	26	71	.83	1.22	.044



Sire I U-2 Coalition 206C
 BD: 1/23/2015 AAA #18626847
 AMF-CAF-D2F-DDF-M1F-NHF-OHF-OSF-RDF GEN: GGPLD

CONNEALY CONSENSUS 7229	CONNEALY CONSENSUS	\$W	58
HF SYNDICATE 213Z	BLUE LILLY OF CONANGA 16	\$F	86
HF MISS BLACKCAP 27R	TC FREEDOM 104	\$G	41
	HF MISS BLACKCAP 50N	\$B	127
YOUNG DALE XCLUSIVE 25X	YOUNG DALE KNOCK OUT 134U	c	222
U2 ERELITE 109Z	YOUNG DALE POLLYANNA 60T		
U-2 ERELITE 1X	S A V FINAL ANSWER 0035		
	U-2 ERELITE 8109U		

CED	BW	WW	YW	MILK	CW	MARB	RE	FAT
11	1.1	55	108	28	35	.42	.47	-.002



Sire J A A R Frontman 313Z
 BD: 2/21/2013 AAA #17614182
 AMF-CAF-D2F-DDF-M1F-NHF-OHF-OSF-RDF GEN: HD50K

KESSLERS FRONTMAN R001	CONNEALY FRONT PAGE 0228	\$W	85
APEX FRONTMAN 081	KESSLERS BELL 0024	\$F	120
APEXETTE PRIDE 9067	CONNEALY THUNDER	\$G	32
	APEXETTE 053 PRIDE 5046	\$B	153
B C MATRIX 4132	O C C EMBLAZON 854E	c	265
A A R BLACKBIRD 9044	CAF PURE PRIDE EXT 99		
A A R BLACKBIRD 7026	MYTTY IN FOCUS		
	A A R BLACKBIRD 5006		

CED	BW	WW	YW	MILK	CW	MARB	RE	FAT
12	-1.8	61	117	33	61	.33	.34	.033

Sire K Larks Canyon 74D4
 BD: 2/23/1994 AAA #12200110
 AMF-CAF-DDF-M1F-NHF-OHF-OSF GEN: Angus DS

EMULATION N BAR 5522	EMULATION 31	\$W	49
N BAR EMULATION EXT	ANKONY 8F78 LASS 8F275	\$F	90
N BAR PRIMROSE 2424	EMULATION 31	\$G	8
	PRIMROSE N BAR 9962	\$B	98
TEHAMA BANDO 155	BAND 234 OF IDEAL 3163	c	185
LARKS MISS BANDO 74A	TEHAMA BLACKCAP G373		
NICHOLS BLACKBIRD Y174	NICHOLS NEW ERA W78		
	NICHOLS BLACKBIRD T238		

CED	BW	WW	YW	MILK	CW	MARB	RE	FAT
10	0	46	87	22	36	.06	-.20	.087

SALE REPRESENTATIVES

Scott Dirk
 Tri-State Livestock News
 605-380-6024

Kirby Goettsch
 Farm & Ranch Guide
 605-226-8925 or 380-3939 (cell phone)

Vern Frey
 Frey Livestock Sales & Service
 701-721-0344

SALE BULLS

DVAuction

www.dvauction.com

Watch & Bid online for FREE!

Can't make the sale?
Let DVAuction bring the sale to you!

Busy during the sale?
Let DVAuction represent your bid!

Visit www.dvauction.com & Register!

*High Speed Internet Access Required

Lot 1

Lees Milestone 5197

BD: 4/01/25

AAA #*21517912

SITZ ACCOMPLISHMENT 720F SITZ MILESTONE TALON EVERELDA 0179	POSS ACHIEVEMENT SITZ BARBARAMERE NELL 166D SITZ UPWARD 307R RIVERBEND EVERELDA 3179	\$M 47
		\$W 64
		\$F 90
A A R TEN X 7008 S A PAULA 5150 LAR PAULA 227 LAR	MYTTY IN FOCUS A A R LADY KELTON 5551 CCC MERRITT 030 PAULA 707 LAR	\$B 146
		\$C 236

BW	205	Ratio	365	Ratio	SC	HP	Dam's Ratios	
92	760	109	1355	114		12.0	9/103	3/109
CED	BW	WW	YW	MILK	CLAW	ANGLE	MARB	RE
6	2.2	79	138	20	.62	.47	.71	.57

ANGUSGS
Powered by Regen Genetics

Lot 2

Lees Milestone 5249

BD: 4/06/25

AAA #*21517925

SITZ ACCOMPLISHMENT 720F SITZ MILESTONE TALON EVERELDA 0179	POSS ACHIEVEMENT SITZ BARBARAMERE NELL 166D SITZ UPWARD 307R RIVERBEND EVERELDA 3179	\$M 55
		\$W 59
		\$F 109
HA PRIME CUT 4493 PAULAS RIGHT TIME 9157 LAR PAULAS RIGHT TIME 6188 LAR	VERMILION SIRLOIN HA MISS BLACKCAP 9127 CONNEALY CONSENSUS 7229 PAULAS RIGHTTIME 741 LAR	\$B 160
		\$C 263

BW	205	Ratio	365	Ratio	SC	HP	Dam's Ratios	
105	781	112	1298	109		9.3	5/101	4/105
CED	BW	WW	YW	MILK	CLAW	ANGLE	MARB	RE
6	3.4	81	136	16	.48	.40	.54	.99

ANGUSGS
Powered by Regen Genetics



Lot 3

Lees Milestone 5165

BD: 3/27/25

AAA #*21517900

SITZ ACCOMPLISHMENT 720F SITZ MILESTONE TALON EVERELDA 0179	POSS ACHIEVEMENT SITZ BARBARAMERE NELL 166D SITZ UPWARD 307R RIVERBEND EVERELDA 3179	\$M 81
		\$W 72
		\$F 66
CONNEALY CONSENSUS 7229 ALICIA 5189 LAR ALICIA 801 LAR	CONNEALY CONSENSUS BLUE LILLY OF CONANGA 16 CROOK MT REALLY WINDY 141 ALICIA 41-93 603 LAR	\$B 107
		\$C 220

BW	205	Ratio	365	Ratio	SC	HP	Dam's Ratios	
86	784	112	1250	105		12.4	9/105	7/101
CED	BW	WW	YW	MILK	CLAW	ANGLE	MARB	RE
7	0.7	71	118	24	.49	.35	.54	.25

ANGUSGS
Powered by Regen Genetics





Lot **4**

Lees Milestone 5188

BD: 4/01/25

AAA #*21517908



SITZ ACCOMPLISHMENT 720F
SITZ MILESTONE
TALON EVERELDA 0179

POSS ACHIEVEMENT
SITZ BARBARAMERE NELL 166D
SITZ UPWARD 307R
RIVERBEND EVERELDA 3179

KG JUSTIFIED 3023
ERICA 9149 LAR
ERICA 262 LAR

CONNEALY JUDGMENT
KG MISS MAGIC 1443
M V C C PACKER 1500
ERICA 141 705 LAR

\$M
102
\$W
93
\$F
106
\$B
167
\$C
319

BW	205	Ratio	365	Ratio	SC	HP	Dam's Ratios	
80	739	106	1299	109		16.0	5/101	3/103
CED	BW	WW	YW	MILK	CLAW	ANGLE	MARB	RE
9	0.2	82	138	29	.58	.41	.91	.52

ANGUSGS
Powered by Regen Genetics

Lot **5**

Lees Milestone 5182

BD: 3/31/25

AAA #*21517906

SITZ ACCOMPLISHMENT 720F
SITZ MILESTONE
TALON EVERELDA 0179

POSS ACHIEVEMENT
SITZ BARBARAMERE NELL 166D
SITZ UPWARD 307R
RIVERBEND EVERELDA 3179

HA COWBOY UP 5405
PAULA 0160 LAR
PAULA 5132 LAR

HA OUTSIDE 3008
HA BLACKCAP LADY 1602
A A R TEN X 7008 S A
PAULA 018 LAR

\$M
67
\$W
66
\$F
83
\$B
129
\$C
234

BW	205	Ratio	365	Ratio	SC	HP	Dam's Ratios	
91	667	96	1283	108		11.2	4/97	/108
CED	BW	WW	YW	MILK	CLAW	ANGLE	MARB	RE
8	1.6	75	136	19	.54	.42	.41	.96

ANGUSGS
Powered by Regen Genetics



Lot **6**

Lees Badger 5240

BD: 4/04/25

AAA #*21517923

HOOVER NO DOUBT
BALDRIDGE BADGER
BALDRIDGE ISABEL Y69

MOGCK BULLSEYE
MISS BLACKCAP ELLSTON J2
STYLES UPGRADE J59
BALDRIDGE ISABEL T935

R/M TURNING POINT 1C94
ALICIA 6112 LAR
ALICIA 4176 LAR

CONNEALY CONSENSUS 7229
R/M RITA 9691
EXAR UPSHOT 0562B
ALICIA 801 LAR

\$M
100
\$W
74
\$F
84
\$B
134
\$C
274

BW	205	Ratio	365	Ratio	SC	HP	Dam's Ratios	
76	754	108	1191	100		10.8	8/99	4/100
CED	BW	WW	YW	MILK	CLAW	ANGLE	MARB	RE
4	2.7	73	121	27	.29	.38	.61	.66

ANGUSGS
Powered by Regen Genetics

Lot **7**

Lees Badger 5252

BD: 4/07/25

AAA #*21517926

HOOVER NO DOUBT
BALDRIDGE BADGER
BALDRIDGE ISABEL Y69

MOGCK BULLSEYE
MISS BLACKCAP ELLSTON J2
STYLES UPGRADE J59
BALDRIDGE ISABEL T935

HA COWBOY UP 5405
PAULA 7213 LAR
PAULA 284 LAR

HA OUTSIDE 3008
HA BLACKCAP LADY 1602
RR CIGAR 7151
PAULA 187 LAR

\$M	110
\$W	71
\$F	90
\$B	124
\$C	271

BW	205	Ratio	365	Ratio	SC	HP	Dam's Ratios		
96	731	105	1262	106		13.9	7/107	6/109	
CED	BW	WW	YW	MILK	CLAW	ANGLE	MARB	RE	
0	2.2	77	126	21	.24	.35	.27	.67	

ANGUSGS
Powered by Waggon Genetics



Lot **8**

Lees Badger 5192

BD: 4/01/25

AAA #*21517909

HOOVER NO DOUBT
BALDRIDGE BADGER
BALDRIDGE ISABEL Y69

MOGCK BULLSEYE
MISS BLACKCAP ELLSTON J2
STYLES UPGRADE J59
BALDRIDGE ISABEL T935

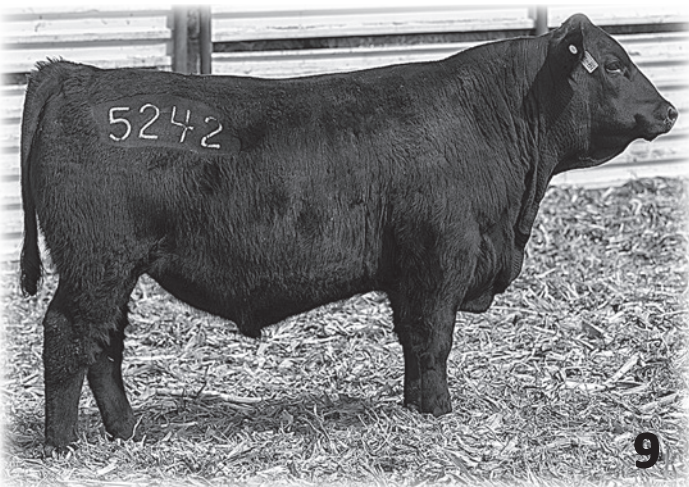
HA COMMANDER 4743
SHOBANDO 9167 LAR
SHOBANDA 906 LAR

HA COMMANDER 2544
HA BLACKCAP LADY 1545
CONNEALY LEAD ON
SHOBANDA 708 LAR

\$M	64
\$W	56
\$F	97
\$B	144
\$C	251

BW	205	Ratio	365	Ratio	SC	HP	Dam's Ratios		
90	766	110	1262	106		14.6	4/105	3/103	
CED	BW	WW	YW	MILK	CLAW	ANGLE	MARB	RE	
0	2.2	80	142	16	.29	.25	.42	.87	

ANGUSGS
Powered by Waggon Genetics



Lot **9**

Lees Badger 5242

BD: 4/05/25

AAA #*21517924

HOOVER NO DOUBT
BALDRIDGE BADGER
BALDRIDGE ISABEL Y69

MOGCK BULLSEYE
MISS BLACKCAP ELLSTON J2
STYLES UPGRADE J59
BALDRIDGE ISABEL T935

CONNEALY CONSENSUS 7229
ALICIA 5186 LAR
ALICIA 801 LAR

CONNEALY CONSENSUS
BLUE LILLY OF CONANGA 16
CROOK MT REALLY WINDY 141
ALICIA 41-93 603 LAR

\$M	91
\$W	90
\$F	105
\$B	159
\$C	297

BW	205	Ratio	365	Ratio	SC	HP	Dam's Ratios		
86	768	110	1214	102		11.1	9/102	5/101	
CED	BW	WW	YW	MILK	CLAW	ANGLE	MARB	RE	
2	1.6	86	140	26	.32	.36	.62	.69	

ANGUSGS
Powered by Waggon Genetics

Lot **10**

Lees Badger 512 SHL

BD: 3/31/25

AAA #*21517873

HOOVER NO DOUBT
BALDRIDGE BADGER
BALDRIDGE ISABEL Y69

MOGCK BULLSEYE
MISS BLACKCAP ELLSTON J2
STYLES UPGRADE J59
BALDRIDGE ISABEL T935

A A R COUNSELOR 5546
ERICA 905 SHL LAR
ERICA 3112 LAR

CONNEALY COUNSELOR
A A R AIRY PRIMROSE 9595
HA BISMARCK 1666
ERICA 027 LAR

\$M
76
\$W
54
\$F
110
\$B
162
\$C
286

BW	205	Ratio	365	Ratio	SC	HP	Dam's Ratios		
107	700	100	1222	103		12.2	5/97	4/101	
CED	BW	WW	YW	MILK	CLAW	ANGLE	MARB	RE	
1	3.5	70	121	19	.32	.47	.54	.81	

ANGUSGS
Powered by Regen Genetics



10

VITAFERM®

WITH THE AMAFERM® ADVANTAGE

"Feeding VitaFerm has helped our conception rates and the fertility of our bulls."

— Bob White

For more information visit
www.vitaferm.com

Lot **11**

Lees Frontman 5102

BD: 2/25/25

AAA #*21517889

APEX FRONTMAN 081
A A R FRONTMAN 3132
A A R BLACKBIRD 9044

KESSLERS FRONTMAN R001
APEXETTE PRIDE 9067
B C MATRIX 4132
A A R BLACKBIRD 7026

SITZ STELLAR 726D
SHOBANDO 3155 LAR
SHOBANDO 5141 LAR

MOHNEN SUBSTANTIAL 272
SITZ PRIDE 200B
APEX WINDY 078
SHOBADA 070 LAR

\$M
75
\$W
64
\$F
99
\$B
127
\$C
240

BW	205	Ratio	365	Ratio	SC	HP	Dam's Ratios		
64	709	106	1186	103		13.1	1/106	1/103	
CED	BW	WW	YW	MILK	CLAW	ANGLE	MARB	RE	
16	-3.1	73	132	19	.53	.47	.30	.04	

ANGUSGS
Powered by Regen Genetics



11

Lot **12**

Lees Frontman 542 SJL

BD: 03/17/25

AAA #*21517880

APEX FRONTMAN 081
A A R FRONTMAN 3132
A A R BLACKBIRD 9044

KESSLERS FRONTMAN R001
APEXETTE PRIDE 9067
B C MATRIX 4132
A A R BLACKBIRD 7026

SITZ STELLAR 726D
ALICIA SIS 224 SJL LAR
ALICIA SIS 304 LAR

MOHNEN SUBSTANTIAL 272
SITZ PRIDE 200B
A A R TEN X 7008 S A
ALICIA 112 SIS LAR

\$M
73
\$W
73
\$F
97
\$B
140
\$C
255

BW	205	Ratio	365	Ratio	SC	HP	Dam's Ratios		
68	690	99	1205	102		10.6	2/105	2/104	
CED	BW	WW	YW	MILK	CLAW	ANGLE	MARB	RE	
12	-1.1	71	134	28	.36	.31	.53	.46	

ANGUSGS
Powered by Regen Genetics

Lot 13 Lees Frontman 0166 5277

BD: 4/26/25

AAA #*21517933

A A R FRONTMAN 3132
LEES FRONTMAN 0166
SHOBANDA 7159 LAR

APEX FRONTMAN 081
A A R BLACKBIRD 9044
HA COWBOY UP 5405
SHOBADA 070 LAR

\$M
68
\$W
56
\$F
42
\$B
91
\$C
186

CONNEALY CONSENSUS 7229
PAULAS RIGHT TIME 6188 LAR
PAULAS RIGHT TIME 741 LAR

CONNEALY CONSENSUS
BLUE LILLY OF CONANGA 16
LEACHMAN RIGHT TIME
SODAK PAULA 6139-96

BW	205	Ratio	365	Ratio	SC	HP	Dam's Ratios		
84	691	99	1126	95		13.7	7/101	4/102	
CED	BW	WW	YW	MILK	CLAW	ANGLE	MARB	RE	
10	-0.8	49	91	34	.62	.54	.77	-.01	

ANGUSGS
Powered by Regen Genetics



Lot 14 Lees Frontman 0166 5273

BD: 4/21/25

AAA #*21517931

A A R FRONTMAN 3132
LEES FRONTMAN 0166
SHOBANDA 7159 LAR

APEX FRONTMAN 081
A A R BLACKBIRD 9044
HA COWBOY UP 5405
SHOBADA 070 LAR

\$M
78
\$W
69
\$F
105
\$B
136
\$C
254

DIAMOND IN THE ROUGH
ERICA 7212 LAR
ERICA 027 LAR

DIAMOND JUSTICE 9015
DIAMOND BLACK LADY 7206
CROOK MT REALLY WINDY 141
ERICA 601 LAR

BW	205	Ratio	365	Ratio	SC	HP	Dam's Ratios		
88	780	112	1233	104		11.3	7/99	5/98	
CED	BW	WW	YW	MILK	CLAW	ANGLE	MARB	RE	
7	-0.5	67	125	28	.32	.41	.31	.36	

ANGUSGS
Powered by Regen Genetics



Lot 15 Lees No Doubt 5217

BD: 3/24/25

AAA #*21517946

MOGCK BULLSEYE
HOOVER NO DOUBT
MISS BLACKCAP ELLSTON J2



MOGCK SURE SHOT
MOGCK MARY 1255
SYDGEN C C & 7
MISS BLACKCAP ELLSTON D154

\$M
55
\$W
44
\$F
108
\$B
173
\$C
279

RR CIGAR 7151
TRAVETTE 073 SHL LAR
TRAVETTE 811 LAR

R C BLACK CIGAR 0293
RR BLACKCAP 4752
CONNEALY LEAD ON
TRAVETTE 524 SHL LAR

BW	205	Ratio	365	Ratio	SC	HP	Dam's Ratios		
93	648	100	1200	100		9.0	12/105	7/104	
CED	BW	WW	YW	MILK	CLAW	ANGLE	MARB	RE	
-6	4.3	64	116	24	.34	.41	.80	.79	

ANGUSGS
Powered by Regen Genetics



Lot **16**

Lees No Doubt 5215

BD: 3/21/25

AAA #+*21517944



MOGCK BULLSEYE
HOOVER NO DOUBT
MISS BLACKCAP ELLSTON J2

MOGCK SURE SHOT
MOGCK MARY 1255
SYDGEN C C & 7
MISS BLACKCAP ELLSTON D154

\$M	62
\$W	31
\$F	101
\$B	159
\$C	268

RR CIGAR 7151
TRAVETTE 073 SHL LAR
TRAVETTE 811 LAR

R C BLACK CIGAR 0293
RR BLACKCAP 4752
CONNEALY LEAD ON
TRAVETTE 524 SHL LAR

BW	205	Ratio	365	Ratio	SC	HP	Dam's Ratios		
92	721	100	1207	100		13.2	12/105	7/104	
CED	BW	WW	YW	MILK	CLAW	ANGLE	MARB	RE	
4	2.6	55	101	15	.41	.45	.68	.69	

ANGUSGS
Powered by Regen Genetics

Lot **17**

Lees No Doubt 5218

BD: 3/27/25

AAA #+*21517947

MOGCK BULLSEYE
HOOVER NO DOUBT
MISS BLACKCAP ELLSTON J2

MOGCK SURE SHOT
MOGCK MARY 1255
SYDGEN C C & 7
MISS BLACKCAP ELLSTON D154

\$M	75
\$W	38
\$F	101
\$B	145
\$C	263

RR CIGAR 7151
TRAVETTE 073 SHL LAR
TRAVETTE 811 LAR

R C BLACK CIGAR 0293
RR BLACKCAP 4752
CONNEALY LEAD ON
TRAVETTE 524 SHL LAR

BW	205	Ratio	365	Ratio	SC	HP	Dam's Ratios		
87	731	100	1208	100		12.6	12/105	7/104	
CED	BW	WW	YW	MILK	CLAW	ANGLE	MARB	RE	
-2	3.1	59	107	17	.38	.45	.37	.74	

ANGUSGS
Powered by Regen Genetics



Lot **18**

Lees No Doubt 5216

BD: 3/23/25

AAA #+*21517945



MOGCK BULLSEYE
HOOVER NO DOUBT
MISS BLACKCAP ELLSTON J2

MOGCK SURE SHOT
MOGCK MARY 1255
SYDGEN C C & 7
MISS BLACKCAP ELLSTON D154

\$M	71
\$W	42
\$F	95
\$B	157
\$C	275

RR CIGAR 7151
TRAVETTE 073 SHL LAR
TRAVETTE 811 LAR

R C BLACK CIGAR 0293
RR BLACKCAP 4752
CONNEALY LEAD ON
TRAVETTE 524 SHL LAR

BW	205	Ratio	365	Ratio	SC	HP	Dam's Ratios		
79	708	100	1233	100		13.7	12/105	7/104	
CED	BW	WW	YW	MILK	CLAW	ANGLE	MARB	RE	
-1	3.5	63	118	20	.42	.48	.71	.80	

ANGUSGS
Powered by Regen Genetics

Lot **19**

Lees No Doubt 5212

BD: 3/18/25

AAA #+*21517942

MOGCK BULLSEYE
HOOVER NO DOUBT
MISS BLACKCAP ELLSTON J2

MOGCK SURE SHOT
MOGCK MARY 1255
SYDGEN C C & 7
MISS BLACKCAP ELLSTON D154

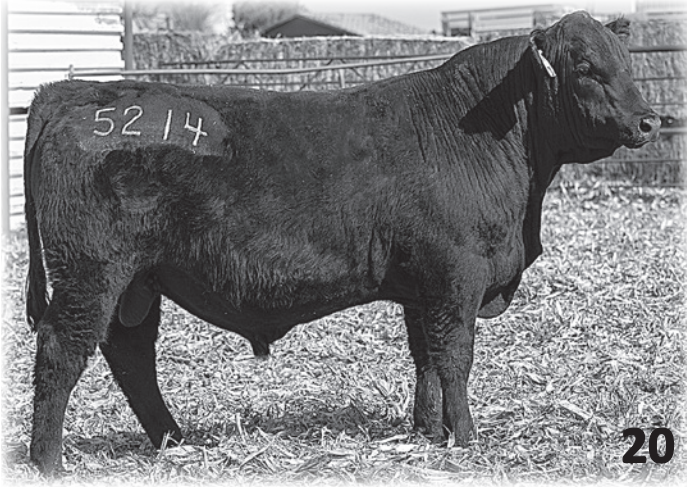
\$M	54
\$W	40
\$F	102
\$B	155
\$C	255

RR CIGAR 7151
TRAVETTE 073 SHL LAR
TRAVETTE 811 LAR

R C BLACK CIGAR 0293
RR BLACKCAP 4752
CONNEALY LEAD ON
TRAVETTE 524 SHL LAR

BW	205	Ratio	365	Ratio	SC	HP	Dam's Ratios		
85	748	100	1286	100		11.1	12/105	7/104	
CED	BW	WW	YW	MILK	CLAW	ANGLE	MARB	RE	
-2	3.3	62	113	17	.58	.48	.64	.66	

ANGUSGS
Powered by Regen Genetics



Lot **20**

Lees No Doubt 5214

BD: 3/21/25

AAA #*21517943

MOGCK BULLSEYE
HOOVER NO DOUBT
 MISS BLACKCAP ELLSTON J2

MOGCK SURE SHOT
 MOGCK MARY 1255
 SYDGEN C C & 7
 MISS BLACKCAP ELLSTON D154

RR CIGAR 7151
TRAVETTE 073 SHL LAR
 TRAVETTE 811 LAR

R C BLACK CIGAR 0293
 RR BLACKCAP 4752
 CONNEALY LEAD ON
 TRAVETTE 524 SHL LAR

\$M
39
\$W
42
\$F
114
\$B
169
\$C
258

BW	205	Ratio	365	Ratio	SC	HP	Dam's Ratios		
97	795	100	1318	100		12.0	12/105	7/104	
CED	BW	WW	YW	MILK	CLAW	ANGLE	MARB	RE	
-12	7.6	86	152	16	.41	.40	.62	.66	

ANGUSGS
Powered by MegaGen Genetics

Lot **21**

Lees Milestone 5141

BD: 3/06/25

AAA #*21517894

SITZ ACCOMPLISHMENT 720F
SITZ MILESTONE
 TALON EVERELDA 0179

POSS ACHIEVEMENT
 SITZ BARBARAMERE NELL 166D
 SITZ UPWARD 307R
 RIVERBEND EVERELDA 3179

LEES CREED 9109
SIERRA 2215 LAR
 SIERRA 307 LAR

A A R CREED 5802
 PAULA LEAD 7161 LAR
 S A V BISMARCK 5682
 SIERRA 168 LAR

\$M
74
\$W
56
\$F
90
\$B
127
\$C
239

BW	205	Ratio	365	Ratio	SC	HP	Dam's Ratios		
75	709	102	1309	111		13.5	2/101	2/106	
CED	BW	WW	YW	MILK	CLAW	ANGLE	MARB	RE	
14	-1.7	57	109	25	.45	.46	.41	.44	

ANGUSGS
Powered by MegaGen Genetics



Lot **22**

Lees Milestone 5238

BD: 7/04/25

AAA #*21517921

SITZ ACCOMPLISHMENT 720F
SITZ MILESTONE
 TALON EVERELDA 0179

POSS ACHIEVEMENT
 SITZ BARBARAMERE NELL 166D
 SITZ UPWARD 307R
 RIVERBEND EVERELDA 3179

A A R FRONTMAN 3132
PAULA TIME 8113 LAR
 PAULAS RIGHT TIME 6190 LAR

APEX FRONTMAN 081
 A A R BLACKBIRD 9044
 CONNEALY CONSENSUS 7229
 PAULAS RIGHT TIME 741 LAR

\$M
87
\$W
70
\$F
83
\$B
126
\$C
250

BW	205	Ratio	365	Ratio	SC	HP	Dam's Ratios		
83	743	107	1236	104		12.3	6/101	4/104	
CED	BW	WW	YW	MILK	CLAW	ANGLE	MARB	RE	
14	-1.5	60	112	32	.46	.35	.53	.49	

ANGUSGS
Powered by MegaGen Genetics

Lot **23**

Lees Milestone 5180

BD: 3/30/25

AAA #*21517904

SITZ ACCOMPLISHMENT 720F
SITZ MILESTONE
TALON EVERELDA 0179

POSS ACHIEVEMENT
SITZ BARBARAMERE NELL 166D
SITZ UPWARD 307R
RIVERBEND EVERELDA 3179

\$M
88
\$W
71
\$F
75
\$B
103
\$C
222

A A R FRONTMAN 3132
SHOBANDO 0153 LAR
SHOBANDO 5141 LAR

APEX FRONTMAN 081
A A R BLACKBIRD 9044
APEX WINDY 078
SHOBADA 070 LAR

BW	205	Ratio	365	Ratio	SC	HP	Dam's Ratios		
77	715	103	1277	108		11.0	4/103	3/103	
CED	BW	WW	YW	MILK	CLAW	ANGLE	MARB	RE	
11	-1.2	65	112	24	.49	.36	.25	.42	

ANGUSGS
Powered by Regen Genetics



Lot **24**

Lees Milestone 513 SHL

BD: 4/01/25

AAA #21517874

SITZ ACCOMPLISHMENT 720F
SITZ MILESTONE
TALON EVERELDA 0179

POSS ACHIEVEMENT
SITZ BARBARAMERE NELL 166D
SITZ UPWARD 307R
RIVERBEND EVERELDA 3179

\$M
87
\$W
60
\$F
83
\$B
132
\$C
258

S A V BISMARCK 5682
TRAVETTE 356 SHL LAR
TRAVETTE 021 SHL LAR

G A R GRID MAKER
S A V ABIGALE 0451
CROOK MT REALLY WINDY 141
TRAVETTE 814 SHL LAR

BW	205	Ratio	365	Ratio	SC	HP	Dam's Ratios		
86	609	87	1113	94		11.6	10/95	6/98	
CED	BW	WW	YW	MILK	CLAW	ANGLE	MARB	RE	
10	-0.3	59	101	24	.50	.46	.60	.62	

ANGUSGS
Powered by Regen Genetics



Lot **25**

Lees Milestone 5154

BD: 3/23/25

AAA #21517898

SITZ ACCOMPLISHMENT 720F
SITZ MILESTONE
TALON EVERELDA 0179

POSS ACHIEVEMENT
SITZ BARBARAMERE NELL 166D
SITZ UPWARD 307R
RIVERBEND EVERELDA 3179

\$M
70
\$W
38
\$F
60
\$B
99
\$C
198

EXAR UPSHOT 0562B
ALICIA 4145 KAR
ALICIA RT 620 LAR

SITZ UPWARD 307R
EXAR BARBARA T020
LEACHMAN RIGHT TIME
ALICIA 6122 401 LAR

BW	205	Ratio	365	Ratio	SC	HP	Dam's Ratios		
79	732	105	1174	99		11.8	9/103	5/102	
CED	BW	WW	YW	MILK	CLAW	ANGLE	MARB	RE	
5	-0.2	51	86	15	.51	.46	.40	.49	

ANGUSGS
Powered by Regen Genetics



Lot **26**

Lees Black Mass 5222

BD: 4/02/25

AAA #*21517914

B BAR WINDY 79
B BAR BLACK MASS 3045
 B BAR QUEEN 304

CROOK MT REALLY WINDY 141
 B BAR LADY JEWEL 116
 SITZ RLS ALLIANCE 7164
 B BAR QUEEN 557

HA COWBOY UP 5405
SHOBANDO 0172 LAR
 SHOBANDA 906 LAR

HA OUTSIDE 3008
 HA BLACKCAP LADY 1602
 CONNEALY LEAD ON
 SHOBANDA 708 LAR

\$M
87
\$W
63
\$F
99
\$B
134
\$C
261

BW	205	Ratio	365	Ratio	SC	HP	Dam's Ratios	
80	636	91	1070	90		11.3	4/94	1/90
CED	BW	WW	YW	MILK	CLAW	ANGLE	MARB	RE
8	-0.6	58	102	28	.44	.49	.20	.89

ANGUSGS
Powered by Regen Genetics

Lot **27**

Lees Black Mass 5173

BD: 3/28/25

AAA #*21517902

B BAR WINDY 79
B BAR BLACK MASS 3045
 B BAR QUEEN 304

CROOK MT REALLY WINDY 141
 B BAR LADY JEWEL 116
 SITZ RLS ALLIANCE 7164
 B BAR QUEEN 557

LEES COWBOY UP 7136
PAULA LEAD 1191 LAR
 PAULA LEAD 5145 LAR

HA COWBOY UP 5405
 PAULA 187 141 LAR
 S A V BISMARCK 5682
 PAULAS LEAD 163 LAR

\$M
110
\$W
63
\$F
68
\$B
95
\$C
233

BW	205	Ratio	365	Ratio	SC	HP	Dam's Ratios	
78	623	89	1097	92		17.1	3/98	2/96
CED	BW	WW	YW	MILK	CLAW	ANGLE	MARB	RE
12	-2.6	47	81	34	.43	.53	.12	.61

ANGUSGS
Powered by Regen Genetics



Lot **28**

Lees Black Mass 540 8JL

BD: 3/12/25

AAA #21252620

B BAR BLACK MASS 3045
B BAR BLACK MASS 6273
 B BAR LADY JEWEL 627

B BAR WINDY 79
 B BAR QUEEN 304
 SRS BALANCE 0609B
 B BAR LADY JEWEL 388

BASIN PAYWEIGHT 1682
MEDROCK PAYLOAD ANNIE 2013
 MED ROCK ANNIE LOAD 880

BASIN PAYWEIGHT 0065
 21AR O LASS 7017
 SITZ RELOAD 411C
 MED ROCK ANNIE BUSTER 019

\$M
110
\$W
55
\$F
87
\$B
104
\$C
245

BW	205	Ratio	365	Ratio	SC	HP	Dam's Ratios	
73	675	97	1150	97		15.9	2/101	1/97
CED	BW	WW	YW	MILK	CLAW	ANGLE	MARB	RE
8	-1.3	54	88	23	.49	.46	-.07	.82

ANGUSGS
Powered by Regen Genetics

Lot **29**

Lees Black Mass 5228

BD: 4/02/25

AAA #*21517917

B BAR WINDY 79
B BAR BLACK MASS 3045
 B BAR QUEEN 304

CROOK MT REALLY WINDY 141
 B BAR LADY JEWEL 116
 SITZ RLS ALLIANCE 7164
 B BAR QUEEN 557

APEX WINDY 078
ISABELLA 5131 LAR
 ISABELLA 005 LAR

H A R B WINDY 702 JH
 APEXETTE LUCY 6037
 H A IMAGE MAKER 0415
 ISABELLA 2106 LAR

\$M
112
\$W
74
\$F
81
\$B
113
\$C
259

BW	205	Ratio	365	Ratio	SC	HP	Dam's Ratios		
91	716	103	1153	97		15.4	9/103	6/101	
CED	BW	WW	YW	MILK	CLAW	ANGLE	MARB	RE	
9	-1.0	59	94	31	.41	.55	.16	.85	

ANGUSGS
Powered by Helgen Genetics



30

Lot **30**

Lees Black Mass 5112

BD: 3/03/25

AAA #*21517890

B BAR WINDY 79
B BAR BLACK MASS 3045
 B BAR QUEEN 304

CROOK MT REALLY WINDY 141
 B BAR LADY JEWEL 116
 SITZ RLS ALLIANCE 7164
 B BAR QUEEN 557

A A R FRONTMAN 3132
ALICIA 3117 LAR
 ALICIA 1176 LAR

APEX FRONTMAN 081
 A A R BLACKBIRD 9044
 HA PRIME CUT 4493
 ALICIA 5169 LAR

\$M
72
\$W
48
\$F
97
\$B
133
\$C
245

BW	205	Ratio	365	Ratio	SC	HP	Dam's Ratios		
59	735	109	1185	102		12.0	1/109	1/102	
CED	BW	WW	YW	MILK	CLAW	ANGLE	MARB	RE	
8	-0.1	51	98	27	.49	.59	.39	.54	

ANGUSGS
Powered by Helgen Genetics

Lot **31**

Lees Badger 514 SHL

BD: 4/04/25

AAA #*21517875

HOOVER NO DOUBT
BALDRIDGE BADGER
 BALDRIDGE ISABEL Y69

MOGCK BULLSEYE
 MISS BLACKCAP ELLSTON J2
 STYLES UPGRADE J59
 BALDRIDGE ISABEL T935

HA COWBOY UP 5405
TRAVETTE 707 SHL LAR
 TRAVETTE 021 SHL LAR

HA OUTSIDE 3008
 HA BLACKCAP LADY 1602
 CROOK MT REALLY WINDY 141
 TRAVETTE 814 SHL LAR

\$M
70
\$W
62
\$F
93
\$B
128
\$C
236

BW	205	Ratio	365	Ratio	SC	HP	Dam's Ratios		
81	680	98	1166	99		10.9	7/91	5/97	
CED	BW	WW	YW	MILK	CLAW	ANGLE	MARB	RE	
9	0.9	83	145	11	.35	.35	.31	.49	

ANGUSGS
Powered by Helgen Genetics



31



Lot **32**

Lees Badger 553 SJL

BD: 4/04/25

AAA #*21517886

HOOVER NO DOUBT
BALDRIDGE BADGER
BALDRIDGE ISABEL Y69

MOGCK BULLSEYE
MISS BLACKCAP ELLSTON J2
STYLES UPGRADE J59
BALDRIDGE ISABEL T935

DIAMOND IN THE ROUGH
CLARA SIS 719 SJL LAR
CLARA 367 SIS LAR

DIAMOND JUSTICE 901S
DIAMOND BLACK LADY 7206
M V C C PACKER 1500
CLARA SIS 909 LAR

\$M
87
\$W
67
\$F
101
\$B
146
\$C
276

BW	205	Ratio	365	Ratio	SC	HP	Dam's Ratios		
75	752	108	1149	97		13.8	7/96	7/98	
CED	BW	WW	YW	MILK	CLAW	ANGLE	MARB	RE	
4	0.5	78	131	16	.32	.38	.35	.97	

ANGUSGS
Powered by Regen Genetics

Lot **33**

Lees Badger 546 SJL

BD: 3/26/25

AAA #*21517882

HOOVER NO DOUBT
BALDRIDGE BADGER
BALDRIDGE ISABEL Y69

MOGCK BULLSEYE
MISS BLACKCAP ELLSTON J2
STYLES UPGRADE J59
BALDRIDGE ISABEL T935

CASINO BOMBER N33
ALICIA IMAGE 015 SJL LAR
ALICIA IMAGE 015 LAR

KM BROKEN BOW 002
CASINO ANNIE K48
H A IMAGE MAKER 0415
ALICIA 6122 409 LAR

\$M
84
\$W
72
\$F
110
\$B
157
\$C
288

BW	205	Ratio	365	Ratio	SC	HP	Dam's Ratios		
77	706	101	1205	101		13.0	4/100	3/97	
CED	BW	WW	YW	MILK	CLAW	ANGLE	MARB	RE	
11	-0.3	74	131	21	.33	.36	.46	.89	

ANGUSGS
Powered by Regen Genetics



Lot **34**

Lees Badger 511 SHL

BD: 3/31/25

AAA #*21517872

HOOVER NO DOUBT
BALDRIDGE BADGER
BALDRIDGE ISABEL Y69

MOGCK BULLSEYE
MISS BLACKCAP ELLSTON J2
STYLES UPGRADE J59
BALDRIDGE ISABEL T935

A A R FRONTMAN 3132
TRAVETTE 106 SHL LAR
TRAVETTE 356 SHL LAR

APEX FRONTMAN 081
A A R BLACKBIRD 9044
S A V BISMARCK 5682
TRAVETTE 021 SHL LAR

\$M
103
\$W
70
\$F
97
\$B
153
\$C
301

BW	205	Ratio	365	Ratio	SC	HP	Dam's Ratios		
82	644	92	1170	98		12.1	2/95	2/102	
CED	BW	WW	YW	MILK	CLAW	ANGLE	MARB	RE	
5	0.7	77	133	16	.42	.44	.77	.54	

ANGUSGS
Powered by Regen Genetics

Lot **35**

Lees Keystone 5219

BD: 3/19/25

AAA #+*2157948



EZAR STEP UP 9178
BASIN KEYSTONE 2021
BASIN JOY 9140

G A R BIG STEP K715
BASIN LUCY 4261
EXAR MONUMENTAL 6056B
BASIN JOY 5367

RR CIGAR 7151
TRAVETTE 073 SHL LAR
TRAVETTE 811 LAR

R C BLACK CIGAR 0293
RR BLACKCAP 4752
CONNEALY LEAD ON
TRAVETTE 524 SHL LAR

\$M
82
\$W
66
\$F
106
\$B
189
\$C
327



35

BW	205	Ratio	365	Ratio	SC	HP	Dam's Ratios		
94	810	100	1266	100		13.7	12/105	7/104	
CED	BW	WW	YW	MILK	CLAW	ANGLE	MARB	RE	
2	2.0	67	121	29	.42	.39	1.09	1.09	



36

Lot **36**

Lees Keystone 5204

BD: 3/14/25

AAA #+*21517938



EZAR STEP UP 9178
BASIN KEYSTONE 2021
BASIN JOY 9140

G A R BIG STEP K715
BASIN LUCY 4261
EXAR MONUMENTAL 6056B
BASIN JOY 5367

M V C C PACKER 1500
ERICA 262 LAR
ERICA 141 705 LAR

CONNEALY PACKER 547
MVCC MISSY 222-1194
CROOK MT REALLY WINDY 141
ERICA 6595 509 LAR

\$M
79
\$W
77
\$F
113
\$B
188
\$C
323

BW	205	Ratio	365	Ratio	SC	HP	Dam's Ratios		
86	733	100	1195	100		10.2	10/107	6/104	
CED	BW	WW	YW	MILK	CLAW	ANGLE	MARB	RE	
9	-0.5	59	109	45	.46	.41	1.23	.49	



Lot **37**

Lees Keystone 5208

BD: 3/17/25

AAA #+*21517939



EZAR STEP UP 9178
BASIN KEYSTONE 2021
BASIN JOY 9140

G A R BIG STEP K715
BASIN LUCY 4261
EXAR MONUMENTAL 6056B
BASIN JOY 5367

M V C C PACKER 1500
ERICA 262 LAR
ERICA 141 705 LAR

CONNEALY PACKER 547
MVCC MISSY 222-1194
CRIIK MT REALLY WINDY 141
ERICA 6595 509 LAR

\$M
100
\$W
72
\$F
87
\$B
149
\$C
293

BW	205	Ratio	365	Ratio	SC	HP	Dam's Ratios		
75	736	100	1155	100		11.5	10/107	6/104	
CED	BW	WW	YW	MILK	CLAW	ANGLE	MARB	RE	
12	-0.7	64	116	31	.54	.46	.94	.40	



Lot **38**

Lees Keystone 5209

BD: 3/19/25

AAA #+*21517940



EZAR STEP UP 9178
BASIN KEYSTONE 2021
BASIN JOY 9140

G A R BIG STEP K715
BASIN LUCY 4261
EXAR MONUMENTAL 6056B
BASIN JOY 5367

M V C C PACKER 1500
ERICA 262 LAR
ERICA 141 705 LAR

CONNEALY PACKER 547
MVCC MISSY 222-1194
CRIIK MT REALLY WINDY 141
ERICA 6595 509 LAR

\$M
62
\$W
67
\$F
106
\$B
169
\$C
281

BW	205	Ratio	365	Ratio	SC	HP	Dam's Ratios		
77	686	100	1116	100		10.9	10/107	6/104	
CED	BW	WW	YW	MILK	CLAW	ANGLE	MARB	RE	
11	-1.5	60	112	34	.47	.59	.89	.51	





Lot 40 Lees Frontman 0166 5265

BD: 4/17/25

AAA #*21517928

A A R FRONTMAN 3132
LEES FRONTMAN 0166
SHOBANDA 7159 LAR

APEX FRONTMAN 081
A A R BLACKBIRD 9044
HA COWBOY UP 5405
SHOBADA 070 LAR

HA PRIME CUT 4493
ALICIA 9146 LAR
ALICIA 5186 LAR

VERMILION SIRLOIN
HA MISS BLACKCAP 9127
CONNEALY CONSENSUS 7229
ALICIA 801 LAR

\$M
75
\$W
60
\$F
77
\$B
122
\$C
233

BW	205	Ratio	365	Ratio	SC	HP	Dam's Ratios		
92	708	102	1218	103		14.4	5/102	4/102	
CED	BW	WW	YW	MILK	CLAW	ANGLE	MARB	RE	
8	1.2	67	115	22	.54	.49	.53	.33	

ANGUSGS
Powered by Regen Genetics



Lot 41 Lees Coalition 5230

BD: 4/03/25

AAA #*21517918

HF SYNDICATE 213Z
U-2 COALITION 206C
U2 ERELITE 109Z

CONNEALY CONSENSUS 7229
HF MISS BLACKCAP 27R
YOUNG DALE XCLUSIVE 25X
U-2 ERELITE 1X

HA SAND STORM 3403
SHOBANDA 6225 LAR
SHOBANDA 038 LAR

SITZ UPWARD 307R
HA LASS 4206
H A IMAGE MAKER 0415
SHOBANDA 732 LAR

\$M
69
\$W
59
\$F
72
\$B
107
\$C
208

BW	205	Ratio	365	Ratio	SC	HP	Dam's Ratios		
98	709	102	1221	103		13.0	8/104	4/103	
CED	BW	WW	YW	MILK	CLAW	ANGLE	MARB	RE	
7	3.0	61	109	34	.35	.35	.36	.30	

ANGUSGS
Powered by Regen Genetics

Lot 42 Lees Stellar 555 SJL

BD: 4/07/25

AAA #*21517888

SITZ STELLAR 726D
LEES STELLAR 2139
SHOBANDA 4105 LAR

MOHNER SUBSTANTIAL 272
SITZ PRIDE 200B
APEX WINDY 078
SHOBANDA 232 LAR

LEES CREED 9109
ALICIA IMAGE 221 SJL LAR
ALICIA IMAGE 015 SJL LAR

A A R CREED 5802
PAULA LEAD 7161 LAR
CASINO BOMBER N33
ALICIA IMAGE 015 LAR

\$M
83
\$W
70
\$F
85
\$B
117
\$C
235

BW	205	Ratio	365	Ratio	SC	HP	Dam's Ratios		
89	722	104	1207	102		13.0	2/101	2/100	
CED	BW	WW	YW	MILK	CLAW	ANGLE	MARB	RE	
7	1.0	75	119	20	.33	.49	.37	.30	

ANGUSGS
Powered by Regen Genetics



Lot **43**

Lees Milestone 5224

BD: 4/02/25

AAA #21517916

SITZ ACCOMPLISHMENT 720F
SITZ MILESTONE
TALON EVERELDA 0179

POSS ACHIEVEMENT
SITZ BARBARAMERE NELL 166D
SITZ UPWARD 307R
RIVERBEND EVERELDA 3179

S A V BISMARCK 5682
SIERRA 307 LAR
SIERRA 168 LAR

G A R GRID MAKER
S A V ABIGALE 0451
RR CIGAR 7151
SIERRA 904 SJL LAR

\$M
73
\$W
68
\$F
90
\$B
133
\$C
246

BW	205	Ratio	365	Ratio	SC	HP	Dam's Ratios		
96	708	102	1260	106		16.8	11/101	7/99	
CED	BW	WW	YW	MILK	CLAW	ANGLE	MARB	RE	
3	3.1	69	120	34	.44	.47	.42	.71	

ANGUSGS
Powered by Regen Genetics



Lot **44**

Lees Frontman 0166 5283

BD: 4/30/25

AAA #*21517934

A A R FRONTMAN 3132
LEES FRONTMAN 0166
SHOBANDA 7159 LAR



APEX FRONTMAN 081
A A R BLACKBIRD 9044
HA COWBOY UP 5405
SHOBADA 070 LAR

HA PRIME CUT 4493
ALICIA 1180 LAR
ALICIA 6104 LAR

VERMILION SIRLOIN
HA MISS BLACKCAP 9127
S A V BISMARCK 5682
ALICIA 4181 LAR

\$M
51
\$W
66
\$F
94
\$B
155
\$C
252

BW	205	Ratio	365	Ratio	SC	HP	Dam's Ratios		
92	748	107	1225	103		11.8	3/94	1/103	
CED	BW	WW	YW	MILK	CLAW	ANGLE	MARB	RE	
4	3.5	77	135	25	.58	.50	.71	.83	

ANGUSGS
Powered by Regen Genetics

Lot **45**

Lees Frontman 0166 5276

BD: 4/23/25

AAA #*21517932

A A R FRONTMAN 3132
LEES FRONTMAN 0166
SHOBANDA 7159 LAR

APEX FRONTMAN 081
A A R BLACKBIRD 9044
HA COWBOY UP 5405
SHOBADA 070 LAR

N BAR EMULATION EXT
PAULA LEAD 5163 LAR
PAULA LEAD 725 LAR

EMULATION N BAR 5522
N BAR PRIMROSE 2424
CONNEALY LEAD ON
SODAK PAULA 6139-96

\$M
66
\$W
57
\$F
86
\$B
112
\$C
211

BW	205	Ratio	365	Ratio	SC	HP	Dam's Ratios		
87	744	107	1226	103		14.8	9/102	6/105	
CED	BW	WW	YW	MILK	CLAW	ANGLE	MARB	RE	
10	0.2	62	122	27	.51	.49	.26	.15	

ANGUSGS
Powered by Regen Genetics





Lot 46 Lees Diamond Ranahan 5119

BD: 3/07/25

AAA #*21517892

S WRANGLER 830
M DIAMOND RANAHAN 111
 M DIAMOND ERICA 049

U-2 COALITION 206C
 S ERICA 6196
 LISCO GRAND FINALE 4103
 M DIAMOND ERICA 907

\$M
87
\$W
78
\$F
99
\$B
149
\$C
280

SITZ STELLAR 726D
SHOBANDO 3147 LAR
 SHOBANDO 9165 LAR

MOHNEN SUBSTANTIAL 272
 SITZ PRIDE 200B
 A A R COUNSELOR 5546
 SHOBANDO 5140 LAR

BW	205	Ratio	365	Ratio	SC	HP	Dam's Ratios		
83	706	105	1228	106		13.6	1/105	1/106	
CED	BW	WW	YW	MILK	CLAW	ANGLE	MARB	RE	
6	1.3	71	119	29	.55	.52	.64	.81	



Lot 47

Lees Resilent 5134

BD: 3/29/25

AAA #*21517897

SITZ RESILIENT 10208
LEES RESILIENT 2172
 ALICIA 7181 LAR

SITZ STELLAR 726D
 SITZ MISS BURGESS 1856
 BASIN EXCITEMENT
 ALICIA 801 LAR

\$M
98
\$W
86
\$F
110
\$B
151
\$C
294

LEES BOMBER 0184
SHOBANDO 3150 LAR
 SHOBANDO 0162 LAR

CASINO BOMBER N33
 SHOBANDO 145 LAR
 HA COWBOY UP 5405
 SHOANDO 320 LAR

BW	205	Ratio	365	Ratio	SC	HP	Dam's Ratios		
86	710	106	1296	112		12.3	1/106	1/112	
CED	BW	WW	YW	MILK	CLAW	ANGLE	MARB	RE	
6	1.3	84	151	28	.34	.39	.61	.13	



Lot 48

Lees Diamond Ranahan 549 SJL

BD: 4/01/25

AAA #*21517884

S WRANGLER 830
M DIAMOND RANAHAN 111
 M DIAMOND ERICA 049

U-2 COALITION 206C
 S ERICA 6196
 LISCO GRAND FINALE 4103
 M DIAMOND ERICA 907

\$M
81
\$W
83
\$F
120
\$B
195
\$C
334

A A R COUNSELOR 5546
AMANDA 024 SJL LAR
 AMANDA 109 LAR

CONNEALY COUNSELOR
 A A R AIRY PRIMROSE 9595
 WILLEKES CONVERTER 4402-9
 ROSIE SIS 812 LAR

BW	205	Ratio	365	Ratio	SC	HP	Dam's Ratios		
98	756	108	1319	111		15.0	4/99	2/106	
CED	BW	WW	YW	MILK	CLAW	ANGLE	MARB	RE	
9	1.8	83	144	29	.36	.55	.99	1.03	



Lot 49

Lees Black Mass 5196

BD: 4/01/25

AAA #*21517910

B BAR WINDY 79
B BAR BLACK MASS 3045
 B BAR QUEEN 304

CROOK MT REALLY WINDY 141
 B BAR LADY JEWEL 116
 SITZ RLS ALLIANCE 7164
 B BAR QUEEN 557

\$M
99
\$W
68
\$F
87
\$B
119
\$C
253

DIAMOND IN THE ROUGH
ALICIA 8173 LAR
 ALICIA 5189 LAR

DIAMOND JUSTICE 901S
 DIAMOND BLACK LADY 7206
 CONNEALY CONSENSUS 7229
 ALICIA 801 LAR

BW	205	Ratio	365	Ratio	SC	HP	Dam's Ratios		
96	730	105	1186	100		15.3	6/106	1/100	
CED	BW	WW	YW	MILK	CLAW	ANGLE	MARB	RE	
0	1.4	63	103	29	.38	.37	.18	.68	



Lot 50

Lees Milestone 5239

BD: 4/04/25

AAA #21517922

SITZ ACCOMPLISHMENT 720F
SITZ MILESTONE
 TALON EVERELDA 0179

POSS ACHIEVEMENT
 SITZ BARBARAMERE NELL 166D
 SITZ UPWARD 307R
 RIVERBEND EVERELDA 3179

\$M
81
\$W
63
\$F
97
\$B
141
\$C
264

S A V BISMARCK 5682
PAULAS DESIGN 347 LAR
 PAULAS DESIGN 878 742 LAR

G A R GRID MAKER
 S A V ABIGALE 0451
 BON VIEW NEW DESIGN 878
 SODAK PAULA 6139-96

BW	205	Ratio	365	Ratio	SC	HP	Dam's Ratios		
99	733	105	1178	99		13.8	11/102	6/101	
CED	BW	WW	YW	MILK	CLAW	ANGLE	MARB	RE	
2	3.6	71	132	30	.48	.41	.44	.96	



Lot **51**

Lees Stellar 5267

BD: 4/18/25

AAA #*21517929



SITZ STELLAR 726D
LEES STELLAR 2139
 SHOBANDA 4105 LAR

MOHNEN SUBSTANTIAL 272
 SITZ PRIDE 200B
 APEX WINDY 078
 SHOBANDA 233 LAR

\$M
54
\$W
65
\$F
89
\$B
149
\$C
247

A A R TEN X 7008 S A
PAULA 2103 LAR
 PAULA 0175 LAR

MYTTY IN FOCUS
 A A R LADY KELOTN 5551
 A A R FRONTMAN 3132
 PAULA 6170 LAR

BW	205	Ratio	365	Ratio	SC	HP	Dam's Ratios		
88	720	103	1205	101		14.1	2/103	2/102	
CED	BW	WW	YW	MILK	CLAW	ANGLE	MARB	RE	
3	1.9	70	111	22	.64	.51	.79	.62	



51



Lot **52**

Lees Big Diesel 552 SJL

BD: 4/04/25

AAA #21517885

DL DIESEL
BS BIG DIESEL S861
 TOUR WITH SINKS ANGUS S116

DL DUALY
 DL RUBY 496
 R B TOUR OF DUTY 177
 MISS BAR SY PEARL S122

\$M
44
\$W
54
\$F
104
\$B
143
\$C
229

CTS REMEDY 1T01
MED ROCK CLAIRE REMEDY 839
 MED ROCK COMRADE CLAIRE 611

CONNELLY THUNDER
 CTS 7V03 BELLEMERE MAID 9T02
 CONNELLY COMRADE 1385
 MED ROCK CLAIRE 702 978

BW	205	Ratio	365	Ratio	SC	HP	Dam's Ratios		
97	648	93	1293	109		8.5	4/98	2/104	
CED	BW	WW	YW	MILK	CLAW	ANGLE	MARB	RE	
-3	5.1	86	154	15	.50	.50	.27	.90	



53

Lot **53**

Lees Black Mass 5159

BD: 3/25/25

AAA #*21517899

B BAR WINDY 79
B BAR BLACK MASS 3045
 B BAR QUEEN 304

CROOK MT REALLY WINDY 141
 B BAR LADY JEWEL 116
 SITZ RLS ALLIANCE 7164
 B BAR QUEEN 557

\$M
81
\$W
75
\$F
81
\$B
99
\$C
209

LEES JUSTIFIED 9116
ERICA 1178 LAR
 ERICA 8182 LAR

KG JUSTIFIED 3023
 PAULA 7204 LAR
 A A R COUNSELOR 5546
 ERICA 4196 LAR

BW	205	Ratio	365	Ratio	SC	HP	Dam's Ratios		
86	707	101	1182	99		14.6	3/98	2/102	
CED	BW	WW	YW	MILK	CLAW	ANGLE	MARB	RE	
4	1.0	65	102	34	.48	.54	-.19	.83	



Lot **54**

Lees Canyon 5143

BD: 3/14/25

AAA #*21517896

N BAR EMULATION EXT
LARKS CANYON 74D4
LARKS MISS BANDO 74A

EMULATION N BAR 5522
N BAR PRIMROSE 2424
TEHAMA BANDO 155
NICHOLS BLACKBIRD Y174

LEES CREED 9109
PAULA 2212 LAR
PAULA LEAD 5163 LAR

A A R CREED 5802
PAULA LEAD 7161 LAR
N BAR EMULATION EXT
PAULA LEAD 725 LAR

\$M
43
\$W
49
\$F
85
\$B
111
\$C
187

BW	205	Ratio	365	Ratio	SC	HP	Dam's Ratios		
79	689	99	1195	101		12.7	2/96	2/100	
CED	BW	WW	YW	MILK	CLAW	ANGLE	MARB	RE	
5	2.8	70	124	16	.68	.64	.22	.29	

ANGUSGS
Powered by Regen Genetics



55

Lot **55**

Lees Diamond Ranahan 5177

BD: 3/29/25

AAA #21517936

S WRANGLER 830
M DIAMOND RANAHAN 111
M DIAMOND ERICA 049

U-2 COALITION 206C
S ERICA 6196
LISCO GRAND FINALE 4103
M DIAMOND ERICA 907

APEX WINDY 078
ALICIA 318 LAR
ALICIA RT 620 LAR

H A R B WINDY 702 JH
APEXETTE LUCY 6037
LEACHMAN RIGHT TIME
ALICIA 6122 401 LAR

\$M
73
\$W
68
\$F
91
\$B
133
\$C
246

BW	205	Ratio	365	Ratio	SC	HP	Dam's Ratios		
94	724	104	1143	96		13.2	11/100	5/97	
CED	BW	WW	YW	MILK	CLAW	ANGLE	MARB	RE	
6	2.0	69	103	25	.50	.68	.40	.83	

ANGUSGS
Powered by Regen Genetics

Lot **56**

Lees Resilent 5271

BD: 4/20/25

AAA #21517930

SITZ RESILIENT 10208
LEES RESILIENT 3151
SIERRA 259 LAR

SITZ STELLAR 726D
SITZ MISS BURGESS 1856
M V C C PACKER 1500
SIERRA 503 LAR

KG JUSTIFIED 3023
ALICIA 0141 LAR
ALICIA 6198 LAR

CONNEALY JUDGMENT
KG MISS MAGIC 1443
EXAR UPSHOT 0562B
ALICIA 801 LAR

\$M
88
\$W
72
\$F
94
\$B
146
\$C
277

BW	205	Ratio	365	Ratio	SC	HP	Dam's Ratios		
88	676	97	1194	101		17.1	4/100	2/99	
CED	BW	WW	YW	MILK	CLAW	ANGLE	MARB	RE	
5	1.3	81	136	18	.49	.53	.72	.62	

ANGUSGS
Powered by Regen Genetics



56

Lot **57**

Lees Black Mass 5183

BD: 3/31/25

AAA #*21517911

B BAR WINDY 79
B BAR BLACK MASS 3045
B BAR QUEEN 304

CROOK MT REALLY WINDY 141
B BAR LADY JEWEL 116
SITZ RLS ALLIANCE 7164
B BAR QUEEN 557

\$M
94
\$W
73
\$F
95
\$B
118
\$C
247

HA COWBOY UP 5405
PAULA 0151 LAR
PAULA 6155 LAR

HA OUTSIDE 3008
HA BLACKCAP LADY 1602
HA SAND STORM 3403
PAULA 284 LAR

BW	205	Ratio	365	Ratio	SC	HP	Dam's Ratios		
91	697	100	1167	98		14.9	4/96	2/98	
CED	BW	WW	YW	MILK	CLAW	ANGLE	MARB	RE	
6	1.0	67	124	32	.31	.46	.02	.68	

ANGUSGS
Powered by Regen Genetics

Lot **58**

Lees Stellar 5181

BD: 3/31/25

AAA #*21517905

SITZ STELLAR 726D
LEES STELLAR 2139
SHOBANDA 4105 LAR

MOHNEN SUBSTANTIAL 272
SITZ PRIDE 200B
APEX WINDY 078
SHOBANDA 232 LAR

\$M
113
\$W
79
\$F
99
\$B
147
\$C
304

KG JUSTIFIED 3023
PAULA 2148 LAR
PAULA 5132 LAR

CONNEALY JUDGMENT
KG MISS MAGIC 1443
A A R TEN X 7008 S A
PAULA 018 LAR

BW	205	Ratio	365	Ratio	SC	HP	Dam's Ratios		
78	690	99	1143	96		14.7	2/104	2/99	
CED	BW	WW	YW	MILK	CLAW	ANGLE	MARB	RE	
10	0	71	117	24	.34	.40	.71	.44	

ANGUSGS
Powered by Regen Genetics



Lot **59**

Lees Stellar 5235

BD: 4/04/25

AAA #*21517920

SITZ STELLAR 726D
LEES STELLAR 2139
SHOBANDA 4105 LAR

MOHNEN SUBSTANTIAL 272
SITZ PRIDE 200B
APEX WINDY 078
SHOBANDA 232 LAR

\$M
77
\$W
95
\$F
94
\$B
146
\$C
266

SITZ RESILIENT 10208
ALICIA 2153 LAR
ALICIA 4176 LAR

SITZ STELLAR 726D
SITZ MISS BURGESS 1856
EXAR UPSHOT 0562B
ALICIA 801 LAR

BW	205	Ratio	365	Ratio	SC	HP	Dam's Ratios		
77	774	111	1196	101		12.1	2/109	2/105	
CED	BW	WW	YW	MILK	CLAW	ANGLE	MARB	RE	
9	-0.8	81	133	31	.49	.49	.71	.60	

ANGUSGS
Powered by Regen Genetics

Lot **60**

Lees Stellar 5176

BD: 3/29/25

AAA #*21517903

SITZ STELLAR 726D
LEES STELLAR 2139
SHOBANDA 4105 LAR

MOHNEN SUBSTANTIAL 272
SITZ PRIDE 200B
APEX WINDY 078
SHOBANDA 232 LAR

\$M
109
\$W
82
\$F
83
\$B
135
\$C
284

SITZ STELLAR 726D
LADY MAKER 2178 LAR
LADY MAKER 121 LAR

MOHNEN SUBSTANTIAL 272
SITZ PRIDE 200B
H A IMAGE MAKER 0415
LADY 520 LAR

BW	205	Ratio	365	Ratio	SC	HP	Dam's Ratios		
73	680	98	1122	95		15.0	2/100	2/98	
CED	BW	WW	YW	MILK	CLAW	ANGLE	MARB	RE	
13	-1.8	73	118	24	.35	.43	.73	.48	

ANGUSGS
Powered by Regen Genetics

Lot **61**

Lees Black Mass 5184

BD: 3/31/25

AAA #*21517907

B BAR WINDY 79
B BAR BLACK MASS 3045
B BAR QUEEN 304

CROOK MT REALLY WINDY 141
B BAR LADY JEWEL 116
SITZ RLS ALLIANCE 7164
B BAR QUEEN 557

\$M
91
\$W
76
\$F
99
\$B
129
\$C
258

A A R FRONTMAN 3132
PAULAS RIGHT TIME 1171 LAR
PAULAS RIGHT TIME 6175 LAR

APEX FRONTMAN 081
A A R BLACKBIRD 9044
APEX WINDY 078
PAULAS RIGHT TIME 741 LAR

BW	205	Ratio	365	Ratio	SC	HP	Dam's Ratios		
89	750	108	1212	102		12.1	3/100	1/102	
CED	BW	WW	YW	MILK	CLAW	ANGLE	MARB	RE	
7	0	67	107	27	.34	.41	.09	.98	

ANGUSGS
Powered by Regen Genetics



Lot **62**

Lees Resilent 5124

BD: 3/20/25

AAA #*21517893



SITZ RESILIENT 10208
LEES RESILIENT 2172
ALICIA 7181 LAR

SITZ STELLAR 726D
SITZ MISS BURGESS 1856
BASIN EXCITEMENT
ALICIA 801 LAR

SITZ RESILIENT 10208
SHOBANDO 3135 LAR
SHOBANDA 4105 LAR

SITZ STELLAR 726D
SITZ MISS BURGESS 1856
APEX WINDY 078
SHOBANDA 232 LAR

\$M
98
\$W
84
\$F
80
\$B
144
\$C
285

BW	205	Ratio	365	Ratio	SC	HP	Dam's Ratios	
79	715	106	1189	102		15.2	1/106	1/102
CED	BW	WW	YW	MILK	CLAW	ANGLE	MARB	RE
7	-0.3	73	125	30	.59	.50	.92	.64

ANGUSGS
Powered by Regen Genetics

Lot **63** Lees Diamond Ranahan 5113

BD: 3/03/25

AAA #*21517891



S WRANGLER 830
M DIAMOND RANAHAN 111
M DIAMOND ERICA 049

U-2 COALITION 206C
S ERICA 6196
LISCO GRAND FINALE 4103
M DIAMOND ERICA 907

LEES COWBOY UP 7136
PAULA TIME 3215 LAR
PAULA TIME 8113 LAR

HA COWBOY UP 5405
PAULA I87 141 LAR
A A R FRONTMAN 3132
PAULAS RIGHT TIME 6190 LAR

\$M
89
\$W
75
\$F
83
\$B
143
\$C
274

BW	205	Ratio	365	Ratio	SC	HP	Dam's Ratios	
65	728	108	1139	98		12.3	1/108	1/98
CED	BW	WW	YW	MILK	CLAW	ANGLE	MARB	RE
18	-4.2	63	102	28	.48	.54	.83	.76

ANGUSGS
Powered by Regen Genetics



Lot **64** Lees Resilent 519 SHL

BD: 4/28/25

AAA #*21517878



SITZ RESILIENT 10208
LEES RESILIENT 3151
SIERRA 259 LAR

SITZ STELLAR 726D
SITZ MISS BURGESS 1856
M V C C PACKER 1500
SIERRA 503 LAR

A A R FRONTMAN 3132
PAULA 0189 LAR
PAULA 4159 LAR

APEX FRONTMAN 081
A A R BLACKBIRD 9044
A A R TEN X 7008 S A
PAULA 934 LAR

\$M
70
\$W
72
\$F
86
\$B
141
\$C
253

BW	205	Ratio	365	Ratio	SC	HP	Dam's Ratios	
83	694	100	1073	91		12.8	4/106	4/101
CED	BW	WW	YW	MILK	CLAW	ANGLE	MARB	RE
11	-0.8	61	106	37	.48	.40	.84	.29

ANGUSGS
Powered by Regen Genetics



Lot **65**

Lees Resilent 515 SHL

BD: 4/07/25

AAA #*21517876

SITZ RESILIENT 10208
LEES RESILIENT 3151
SIERRA 259 LAR

SITZ STELLAR 726D
SITZ MISS BURGESS 1856
M V C C PACKER 1500
SIERRA 503 LAR

KG JUSTIFIED 3023
TRAVETTE 001 SHL LAR
TRAVETTE 801 SHL LAR

CONNEALY JUDGMENT
KG MISS MAGIC 1443
DIAMOND IN THE ROUGH
TRAVETTE 356 SHL LAR

\$M
99
\$W
55
\$F
70
\$B
120
\$C
255

BW	205	Ratio	365	Ratio	SC	HP	Dam's Ratios		
58	641	92	1033	87		16.0	4/100	2/90	
CED	BW	WW	YW	MILK	CLAW	ANGLE	MARB	RE	
13	-4.0	50	86	24	.38	.45	.65	.42	

ANGUSGS
Powered by Regen Genetics

Lot **66**

Lees Creed 5198

BD: 4/02/25

AAA #*21517913

LEES CREED 9109
LEES CREED 2209
PAULA 7213 LAR

A A R CREED 5802
PAULA LEAD 7161 LAR
HA COWBOY UP 5405
PAULA 284 LAR

A A R FRONTMAN 3132
SHOBANDA 1170 LAR
SHOBANDA 4105 LAR

APEX FRONTMAN 081
A A R BLACKBIRD 9044
APEX WINDY 078
SHOBANDA 232 LAR

\$M
81
\$W
66
\$F
77
\$B
101
\$C
212

BW	205	Ratio	365	Ratio	SC	HP	Dam's Ratios		
90	652	94	1124	95		13.3	3/104	2/100	
CED	BW	WW	YW	MILK	CLAW	ANGLE	MARB	RE	
13	-0.2	68	118	23	.50	.53	.12	.40	

ANGUSGS
Powered by Regen Genetics



Lot **67**

Lees Big Diesel 554 SJL

BD: 4/04/25

AAA #21517887

DL DIESEL
BS BIG DIESEL S861
TOUR WITH SINKS ANGUS S116

DL DUALY
DL RUBY 496
R B TOUR OF DUTY 177
MISS BAR SY PEARL S122

SITZ RESILIENT 10208
MED ROCK RESILIENT WT 146
MED ROCK LASSIE WEIGHT 5016

SITZ STELLAR 726D
SITZ MISS BURGESS 1856
BASIN PAYWEIGHT 1682
MED ROCK 707 616 071

\$M
68
\$W
63
\$F
108
\$B
145
\$C
256

BW	205	Ratio	365	Ratio	SC	HP	Dam's Ratios		
76	660	95	1212	102		12.3	2/96	2/100	
CED	BW	WW	YW	MILK	CLAW	ANGLE	MARB	RE	
7	2.0	77	137	18	.50	.51	.33	.67	

ANGUSGS
Powered by Regen Genetics



Lot **68**

Lees Black Mass 5170

BD: 3/27/25

AAA #*21517901

B BAR WINDY 79
B BAR BLACK MASS 3045
B BAR QUEEN 304

CROOK MT REALLY WINDY 141
B BAR LADY JEWEL 116
SITZ RLS ALLIANCE 7164
B BAR QUEEN 557

HA COWBOY UP 5405
SHOBANDO 0136 LAR
SHOBANDO 127 LAR

HA OUTSIDE 3008
HA BLACKCAP LADY 1602
R C BLACK CIGAR 0293
SHOBANBA 935 LAR

\$M
75
\$W
61
\$F
97
\$B
123
\$C
235

BW	205	Ratio	365	Ratio	SC	HP	Dam's Ratios		
98	680	98	1136	96		11.7	4/93	2/96	
CED	BW	WW	YW	MILK	CLAW	ANGLE	MARB	RE	
0	3.6	69	117	26	.47	.55	.15	.50	

ANGUSGS
Powered by Regen Genetics

Lot **69**

Lees Stellar 516 SHL

BD: 4/08/25

AAA #*21517877

SITZ STELLAR 726D
LEES STELLAR 2139
 SHOBANDA 4105 LAR

MOHNEN SUBSTANTIAL 272
 SITZ PRIDE 200B
 APEX WINDY 078
 SHOBANDA 232 LAR

SITZ RESILIENT 10208
PAULA LEAD 163 SHL LAR
 PAULAS LEAD 163 LAR

SITZ STELLAR 726D
 SITZ MISS BURGESS 1856
 RR CIGAR 7151
 PAULA LEAD 917 LAR

\$M
74
\$W
62
\$F
75
\$B
130
\$C
243

BW	205	Ratio	365	Ratio	SC	HP	Dam's Ratios	
93	672	96	1155	97		12.6	2/99	2/101
CED	BW	WW	YW	MILK	CLAW	ANGLE	MARB	RE
9	0.6	68	119	21	.43	.56	.94	-.07

ANGUSGS
Powered by MegaGen Genetics



Lot **70**

Lees Stellar 547 SJL

BD: 3/28/25

AAA #*21517883

SITZ STELLAR 726D
LEES STELLAR 2139
 SHOBANDA 4105 LAR



MOHNEN SUBSTANTIAL 272
 SITZ PRIDE 200B
 APEX WINDY 078
 SHOBANDA 232 LAR

LEES BOMBER 0184
ALICIA SIS 222 SJL LAR
 ALICIA SIS 921 LAR

CASINO BOMBER N33
 SHOBANDO 145 LAR
 A A R CREED 5802
 ALICIA SIS 617 LAR

\$M
79
\$W
67
\$F
83
\$B
142
\$C
263

BW	205	Ratio	365	Ratio	SC	HP	Dam's Ratios	
85	659	95	1160	98		11.5	2/95	2/98
CED	BW	WW	YW	MILK	CLAW	ANGLE	MARB	RE
3	1.1	76	126	16	.44	.43	.99	.15

ANGUSGS
Powered by MegaGen Genetics

Lot **71**

Lees Frontman 0166 5258

BD: 4/12/25

AAA #*21517927

A A R FRONTMAN 3132
LEES FRONTMAN 0166
 SHOBANDA 7159 LAR

APEX FRONTMAN 081
 A A R BLACKBIRD 9044
 HA COWBOY UP 5405
 SHOBADA 070 LAR

R C BLACK CIGAR 0293
SHOBANDO 145 LAR
 SHOBANDO 878 405 LAR

CONNEALY FRONTLINE
 REV ROSE OF C H 8091
 BON VIEW NEW SESIGN 878
 SODAK SHOBANDA 6029-96

\$M
76
\$W
39
\$F
61
\$B
89
\$C
191

BW	205	Ratio	365	Ratio	SC	HP	Dam's Ratios	
94	662	95	1145	96		13.0	13/104	11/104
CED	BW	WW	YW	MILK	CLAW	ANGLE	MARB	RE
2	2.1	48	98	27	.41	.59	.30	0

ANGUSGS
Powered by MegaGen Genetics



Lot **72**

Lees Black Mass 5223

BD: 4/02/25

AAA #21517915

B BAR WINDY 79
B BAR BLACK MASS 3045
 B BAR QUEEN 304

CROOK MT REALLY WINDY 141
 B BAR LADY JEWEL 116
 SITZ RLS ALLIANCE 7164
 B BAR QUEEN 557

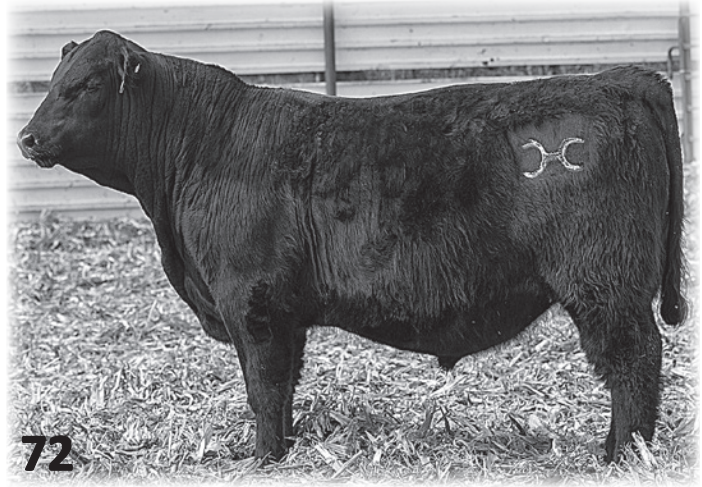
APEX WINDY 078
SHOBANDA 4151 LAR
 SHOBANDA 616 306 LAR

H A R B WINDY 702 JH
 APEXETTE LUCY 6037
 RITO 616 OF 4B20 6807
 SHOBANDA RT 103 LAR

\$M
95
\$W
59
\$F
56
\$B
91
\$C
213

BW	205	Ratio	365	Ratio	SC	HP	Dam's Ratios		
87	664	95	1142	96		16.1	10/102	7/102	
CED	BW	WW	YW	MILK	CLAW	ANGLE	MARB	RE	
2	1.2	65	102	19	.44	.46	.38	.34	

ANGUSGS
Powered by Regen Genetics



72



Lot **73**

Lees Stellar 5232

BD: 4/03/25

AAA #*21517919

SITZ STELLAR 726D
LEES STELLAR 2139
 SHOBANDA 4105 LAR

MOHNEN SUBSTANTIAL 272
 SITZ PRIDE 200B
 APEX WINDY 078
 SHOBANDA 232 LAR

G D A R TRAVELER 9161
SIERRA 2119 LAR
 SIERRA 0218 LAR

D H D TRAVELER 6807
 G D A R SAPPHERE 728
 A A R COUNSELOR 5546
 SIERRA 259 LAR

\$M
76
\$W
72
\$F
82
\$B
126
\$C
239

BW	205	Ratio	365	Ratio	SC	HP	Dam's Ratios		
76	641	92	1164	98		12.2	2/100	1/98	
CED	BW	WW	YW	MILK	CLAW	ANGLE	MARB	RE	
5	1.6	70	119	28	.45	.49	.52	.56	

ANGUSGS
Powered by Regen Genetics

Lot **74**

Lees MR Resource 545 SJL

BD: 3/23/25

AAA #21517881

S A V RESOURCE 1441
MED ROCK RESOURCE 112
 MED ROCK MARRI BART 646

RITO 707 OF IDEAL 3407 7075
 S A V BLACKCAP MAY 4136
 BARTELS 4925 IF 440 718
 MED ROCK MARRI 702 985

MED ROCK RELOAD CONTRAST 949
MEDROCK MISS CONTRAST 289
 MED ROCK CLAIRE POWER 487

SITZ RELOAD 411C
 MED ROCK PEGGY CONTRAST 226
 PA POWER TOOL 9108
 MED ROCK CLAIRE 702 978

\$M
45
\$W
40
\$F
91
\$B
131
\$C
215

BW	205	Ratio	365	Ratio	SC	HP	Dam's Ratios		
82	627	90	1145	96		8.9	2/94	1/96	
CED	BW	WW	YW	MILK	CLAW	ANGLE	MARB	RE	
8	1.8	62	115	14	.50	.48	.39	.56	

ANGUSGS
Powered by Regen Genetics



74

Lot **75**

Lees Resilient 5284

BD: 5/05/25

AAA #*21517935

SITZ RESILIENT 10208
LEES RESILIENT 3151
 SIERRA 259 LAR

SITZ STELLAR 726D
 SITZ MISS BURGESS 1856
 M V C C PACKER 150
 SIERRA 503 LAR

A A R COUNSELOR 5546
SIERRA 0218 LAR
 SIERRA 259 LAR

CONNEALY COUNSELOR
 A A R AIRY PRIMROSE 9595
 M V C C PACKER 1500
 SIERRA 503 LAR

\$M
78
\$W
81
\$F
87
\$B
132
\$C
249

BW	205	Ratio	365	Ratio	SC	HP	Dam's Ratios		
86	731	105				15.7	4/101		
CEB	BW	WW	YW	MILK	CLAW	ANGLE	MARB	RE	
6	2.2	79	134	33	.31	.48	.63	.20	

ANGUSGS
Powered by Regen Genetics





Driving the science of better breeding

There's little room for error in the cattle business. Producers need the most advanced information to make smart selection decisions, and Angus Genetics Inc. (AGI) provides it through genomic-enhanced expected progeny differences (GE-EPDs).

GE-EPDs have become the industry standard for herd improvement, building on decades of science-backed genetic evaluation tools originated and maintained through the American Angus Association, home to the largest and ever-growing single-breed beef cattle database.

EPDs that traditionally contained all pedigree, performance and progeny information now also include results from available genomic, or DNA, tests. Breeders who use genomic technology give buyers access to AGI-generated GE-EPDs that provide:

- Increased predictability and decreased risk for young and unproven animals due to enhanced accuracy of EPDs
- Better characterization of genetics for difficult-to-measure performance traits (such as carcass traits, maternal traits and feed efficiency)
- The ability to make more rapid progress for traits that are important to you, due to:
 - more accurate selection
 - easier identification of genetic outliers
 - the ability to propagate young animals with confidence earlier in their lives

In fact, GE-EPDs on unproven animals have the same amount of accuracy as if they have recorded an average of 15 progeny, depending on the trait. That's valuable insight, offered regularly through the breed's weekly national cattle evaluation.

TRAIT	PROGENY EQUIVALENT	TRAIT	PROGENY EQUIVALENT
Calving Ease Direct	25	Pulmonary Arterial Pressure	17
Calving Ease Maternal	19	Hair Shed Score	8
Birth Weight	23	Heifer Pregnancy	17
Weaning Weight	27	Maternal Milk	35
Yearling Weight	22	Mature Weight	14
Yearling Height	15	Mature Height	9
Dry Matter Intake	11	Carcass Weight	14
Scrotal Circumference	13	Marbling Score	10
Docility	11	Ribeye Area	16
Foot Claw Set	13	Backfat Thickness	13
Foot Angle	13		

How do you know if EPDs are genomic-enhanced?

Ask your breeder, refer to the registration paper, or look for the AGI GE-EPD logo, Angus GS™ powered by partner Neogen or the HD50k by partner Zoetis. These images indicate animals for which genomic testing has been conducted and incorporated by AGI into GE-EPDs



www.angus.org

Lee Angus Ranch

16503 81st St SW
Rhame ND 58651

FIRST-CLASS
Presorted
U.S. Postage
PAID
UNITED PRINTING

